

**CITY OF CROSSVILLE LOW PRESSURE SEWER GENERAL NOTES:**

- PVC PIPE - CLASS 200 PSI PIPE SHALL BE USED UNLESS SPECIFIED OTHERWISE. ALL FITTINGS AND APPURTENANCES (INCLUDING SERVICES) FOR WATER LINE INSTALLATIONS SHALL HAVE A MINIMUM PRESSURE RATING OF 200 PSI.
- LOW PRESSURE SEWER MAINS SHALL HAVE A MINIMUM OF 24" OF COVER, EXCEPT ON TDOT RIGHT OF WAYS WHERE A MINIMUM OF 36" OF COVER IS REQUIRED.
- TRENCH WIDTHS (WHERE ROCK IS ENCOUNTERED DURING EXCAVATION) SHALL BE A MINIMUM OF 2', PLUS THE DIAMETER OF THE LOW PRESSURE SEWER MAIN.
- ALL LOW PRESSURE SEWER MAINS (EXCLUDING THOSE IN A CASING) SHALL HAVE A MINIMUM OF 6" OF BEDDING BELOW, ON EACH SIDE IN SOIL (WITH A MINIMUM OF 12" ON EACH SIDE IN ROCK), AND 12" OF BEDDING ABOVE THE SEWER MAIN. ALL BEDDING MATERIAL SHALL BE FREE OF ROCK LARGER THAN 2" DIAMETER AND ORGANIC DEBRIS, AND SHALL BE INSTALLED IN 6" WELL COMPACTED LIFTS. NO ROCK LARGER THAN 6" IN DIAMETER SHALL BE USED AS BACKFILL IN THE REMAINDER OF THE TRENCH.
- NEW LOW PRESSURE SEWER MAINS SHALL BE INSTALLED 5' INSIDE ROAD RIGHT OF WAYS (TYPICALLY) OR AS SHOWN ON PLANS.
- SUBMITTALS FOR "APPROVED EQUALS" MUST BE PRE-APPROVED IN WRITING BY THE CITY OF CROSSVILLE ENGINEERING DEPARTMENT PRIOR TO INSTALLATION.
- MECHANICAL JOINT RESTRAINTS SHALL BE USED ON ALL FITTINGS (UNLESS SPECIFIED OTHERWISE) AND SHALL BE EBAA IRON, INC., MEGALUG SERIES 2000PV FOR PVC PIPE AND EBAA IRON, INC., MEGALUG SERIES 1100 FOR DUCTILE IRON PIPE OR APPROVED EQUAL.
- ALL LOW PRESSURE SEWER MAINS AND SEWER SERVICE LINES CROSSING STREETS/ROADS SHALL BE ENCASED UNLESS OTHERWISE SPECIFIED BY THE CITY OF CROSSVILLE ENGINEERING DEPARTMENT. TRACER WIRE AND LOCATOR TAPE SHALL BE INSTALLED IN EACH STREET \ ROAD CROSSING WHETHER IT BE A MAIN LINE OR A SERVICE LINE. LOCATOR WIRE SHALL BE PLACED IN THE CASING WITH THE CARRIER PIPE.
- STEEL CASING SHALL BE USED IN ALL BORE AND JACK CROSSINGS, AND WHEN THE TOP OF THE CASING PIPE IS LESS THAN 24" BELOW ROAD SURFACE OR WHEN THE CASING SHALL BE INSTALLED GREATER THAN 7' DEEP FROM THE ROAD SURFACE. STEEL CASING SHALL HAVE A MINIMUM CLEARANCE OF 2" BETWEEN THE CASING AND THE CARRIER PIPE. SPACERS SHALL BE INSTALLED NO MORE THAN 18" FROM EITHER END OF THE CASING.
- STEEL CASINGS SHALL MEET ASTM A-252, SHALL BE BITUMINOUS COATED INSIDE AND OUT, AND SHALL HAVE A MINIMUM YIELD STRENGTH OF 35,000 PSI. THE STEEL CASINGS SHALL ALSO MEET AASHTO H 20 LOADING REQUIREMENTS.
- TRENCHES SHALL BE OPENED SUFFICIENTLY TO ALLOW INSTALLATION AND REMOVAL OF CARRIER PIPE IN MANUFACTURED LENGTHS FROM EITHER END OF THE CASING PIPE. SPACERS SHALL BE USED IN ALL CASINGS UNLESS OTHERWISE NOTED. WHERE CARRIER PIPE IS 2" OR GREATER, SPACERS SHALL BE A MAXIMUM OF 7' APART (OR AS SPECIFIED BY THE MANUFACTURER) AND WITHIN 2' OF EACH BELL WITH A MINIMUM 2" SPACE BETWEEN THE CASING AND THE CARRIER PIPE. CASING SPACERS SHALL BE BWM COMPANY MODEL BWM SS (STAINLESS STEEL) OR APPROVED EQUAL.
- CASING END SEALS SHALL BE USED AND SHALL BE BWM COMPANY MODEL BWM-PO OR MODEL BWM-WP WITH STAINLESS STEEL BANDS OR APPROVED EQUAL.
- THE CONTRACTOR SHALL NOTIFY THE CITY OF CROSSVILLE ENGINEERING DEPARTMENT A MINIMUM OF 24 HOURS IN ADVANCE OF ALL NEW CONSTRUCTION/INSTALLATION WHICH SHALL REQUIRE INSPECTION, SURVEY LOCATION, OR PRESSURE TESTING.

**LOW PRESSURE SEWER PRESSURE TEST:**

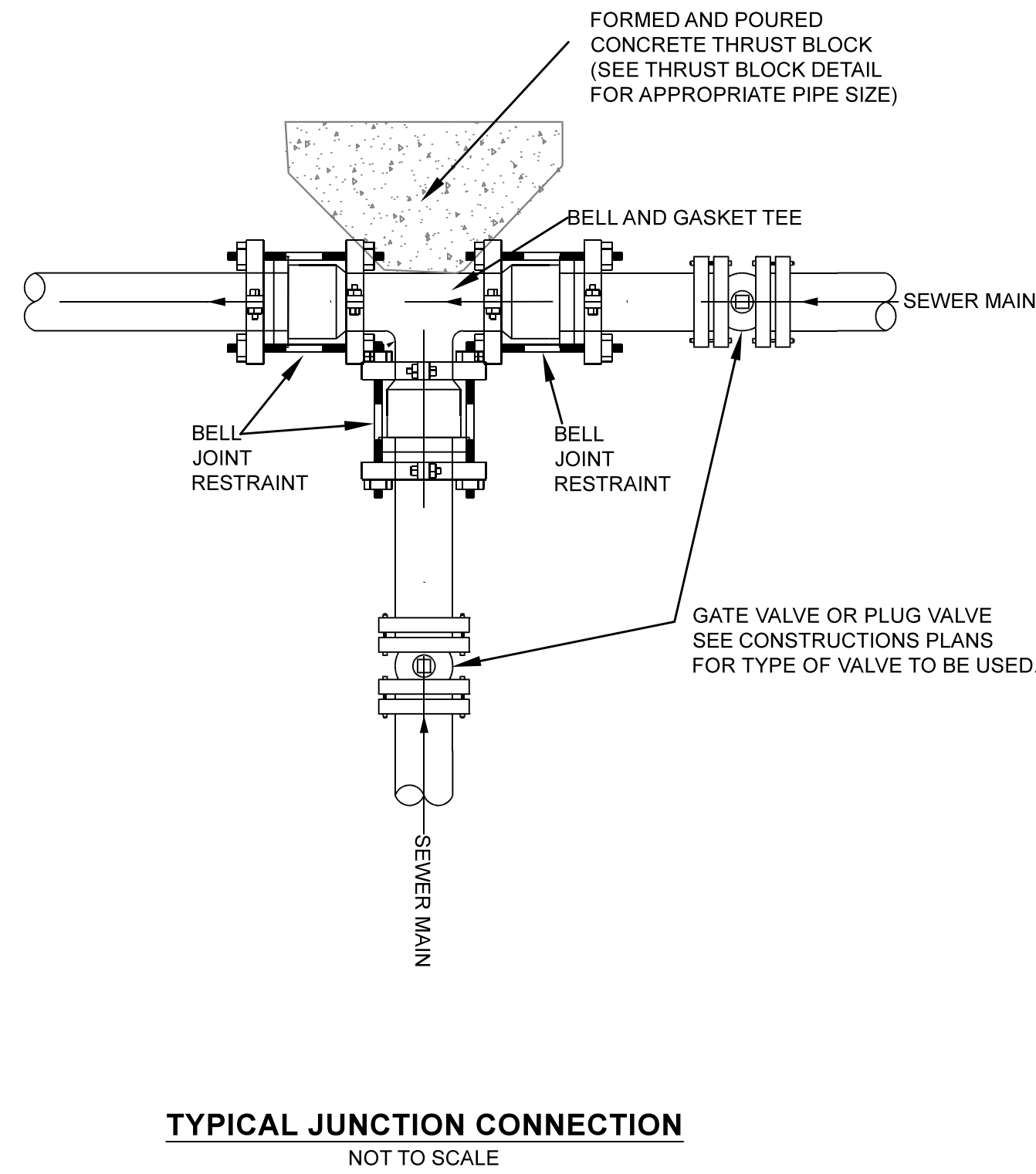
EACH SECTION OF THE COMPLETED SEWER MAIN EXTENSIONS SHALL BE SUBJECTED TO A PRESSURE TEST. THE SECTION TO BE TESTED SHALL BE VALVED OFF BY GATE VALVES, AFTER HAVING BEEN FILLED WITH WATER, AND A POSITIVE DISPLACEMENT TEST PUMP SHALL BE USED TO PUMP WATER INTO THE SECTION TO BUILD UP A TEST PRESSURE OF THE GREATER OF 2 TIMES THE WORKING PRESSURE OR 150 PSI. THE TEST PUMP SHALL THEN BE VALVED OFF FROM THE SYSTEM AND THE PRESSURE SHALL BE OBSERVED A MINIMUM OF TWO HOURS. A DROP IN PRESSURE OF 5 PSI OR MORE DURING THE TWO HOUR TEST PERIOD SHALL BE TAKEN AS AN INDICATION OF LEAKAGE. IN THE EVENT LEAKS ARE FOUND AND CORRECTED, THE PRESSURE TEST SHALL BE REPEATED USING THE SAME PROCEDURE AS DESCRIBED.

**FORCE MAIN SEWER PRESSURE TEST**

THE TESTING PROCEDURE SHALL BE THE SAME AS LOW PRESSURE TESTING, WITH THE EXCEPTION THAT THE TEST PRESSURE SHALL BE **200 PSI**.

**LOW PRESSURE LINES ACCEPTANCE:**

SEWER MAINS AND SERVICES SHALL BE ACCEPTED ONLY AFTER ALL CITY OF CROSSVILLE INSTALLATION AND TESTING REQUIREMENTS HAVE BEEN MET. THE CITY OF CROSSVILLE ENGINEERING DEPARTMENT SHALL VERIFY THAT ALL THE CRITERIA HAS BEEN ACCOMPLISHED FOR THE ACCEPTANCE OF THE SEWER MAINS AND SERVICES BEFORE BEING PLACED INTO THE EXISTING SEWER SYSTEM.



**TYPICAL JUNCTION CONNECTION**  
NOT TO SCALE

NOTE: M. J. = MECHANICAL JOINT.

90 DEGREE BEND							
SIZE	2"	4"	6"	8"	10"	12"	18"
A	16"	16"	26"	33"	40"	50"	70"
B	16"	16"	24"	33"	40"	50"	70"
C	9"	9"	12"	12"	15"	16"	22"
D	8"	8"	12"	16"	20"	25"	24"

45 DEGREE BEND							
SIZE	2"	4"	6"	8"	10"	12"	18"
A	12"	12"	18"	24"	31"	37"	52"
B	12"	12"	18"	24"	31"	37"	52"
C	8"	8"	10"	12"	14"	16"	14"
D	6"	6"	9"	12"	15"	18"	18"

22-1/2 DEGREE BEND							
SIZE	2"	4"	6"	8"	10"	12"	18"
A	9"	9"	13"	18"	23"	26"	40"
B	9"	9"	13"	18"	23"	26"	40"
C	8"	8"	10"	12"	14"	16"	15"
D	4"	4"	6"	9"	11"	13"	16"

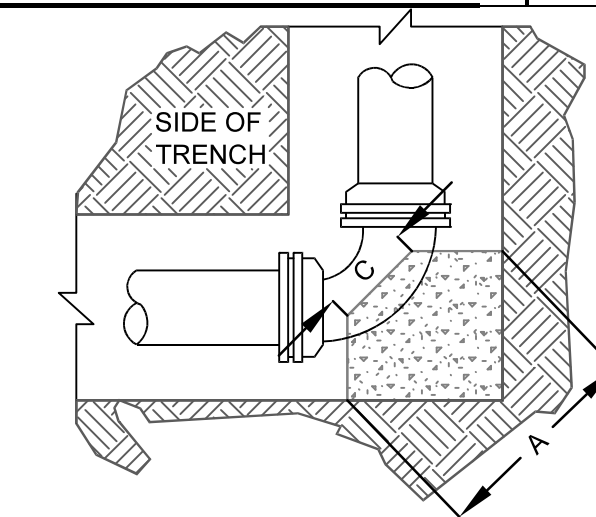
11-1/4 DEGREE BEND							
SIZE	2"	4"	6"	8"	10"	12"	18"
A	9"	9"	11"	13"	16"	18"	30"
B	9"	9"	11"	13"	16"	18"	30"
C	8"	8"	10"	12"	14"	16"	15"
D	4"	4"	5"	6"	8"	9"	16"

TEE							
SIZE	2"	4"	6"	8"	10"	12"	18"
Main	2"- 6"	8"- 12"	8"- 10"	12"	12"	12"	18"
Branch	2"- 6"	2"- 6"	8"- 10"	2"- 6"	8"- 10"	12"	16"- 18"
A	26"	26"	43"	26"	43"	52"	70"
B	26"	26"	43"	26"	43"	52"	70"
C	12"	12"	12"	12"	12"	12"	30"
D	13"	13"	21"	13"	21"	26"	24"

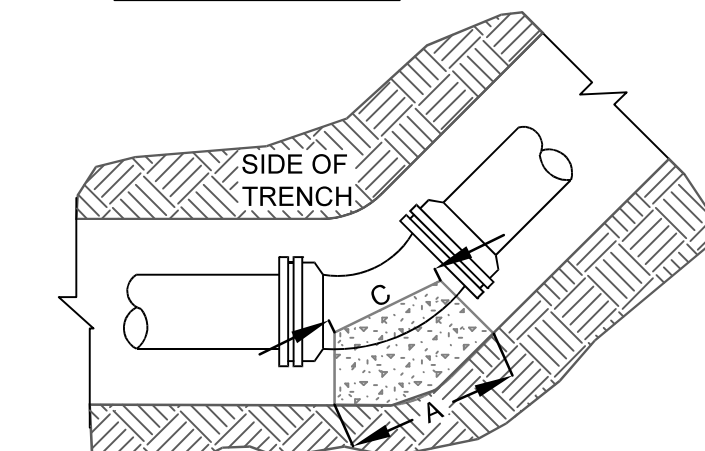
PLUG							
SIZE	2"	4"	6"	8"	10"	12"	18"
A	26"	26"	26"	34"	43"	52"	70"
B	26"	26"	26"	34"	43"	52"	70"
C	12"	12"	12"	12"	12"	12"	30"
D	11"	11"	11"	15"	22"	32"	32"

- NOTES:
- PIPE AND FITTINGS SHALL BE WRAPPED IN 5 MIL. PLASTIC WHERE THRUST BLOCKS ARE INSTALLED.
  - THRUST BLOCKS SHALL BE POURED AGAINST UNDISTURBED EARTH OR ROCK.
  - 2500 PSI (MINIMUM) CONCRETE SHALL BE USED FOR THRUST BLOCKS.

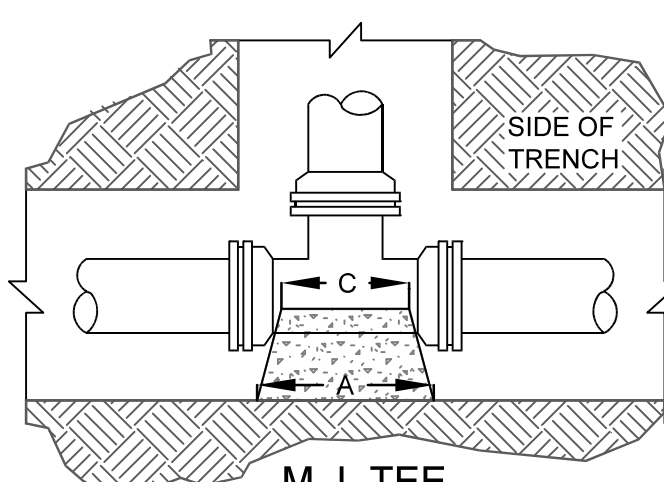
**THRUST BLOCK DETAILS & DIMENSIONS**  
NOT TO SCALE



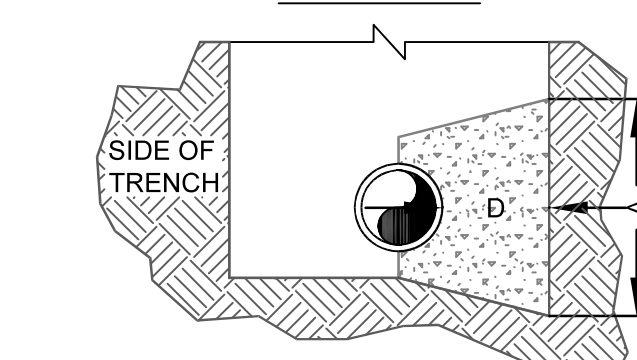
M. J. 90 DEGREE BEND



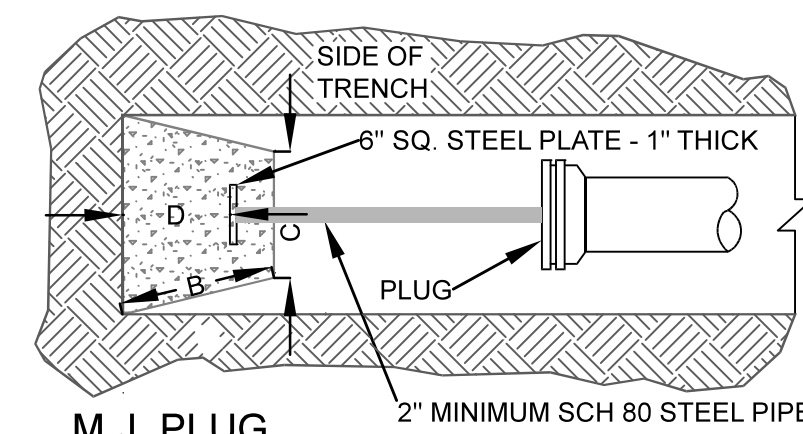
M. J. 45 - 22 1/2 - 11 1/4 DEGREE BENDS



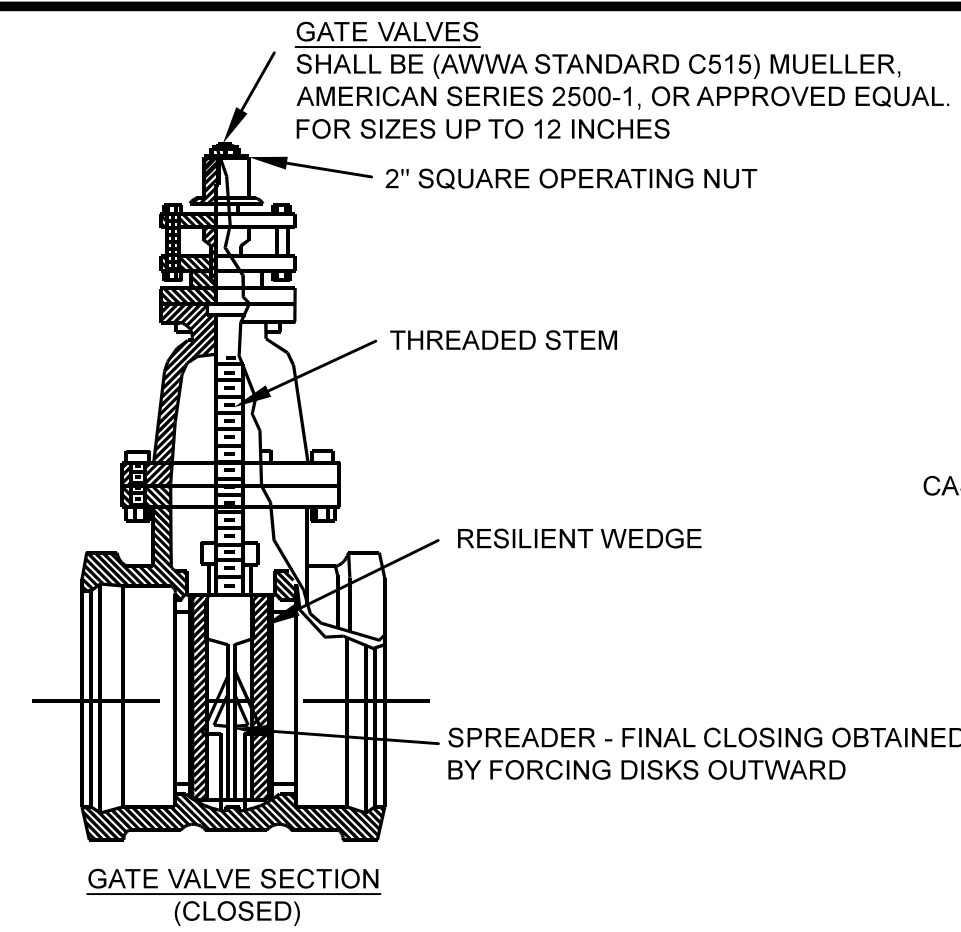
M. J. TEE



TYPICAL SECTION SIDE VIEW

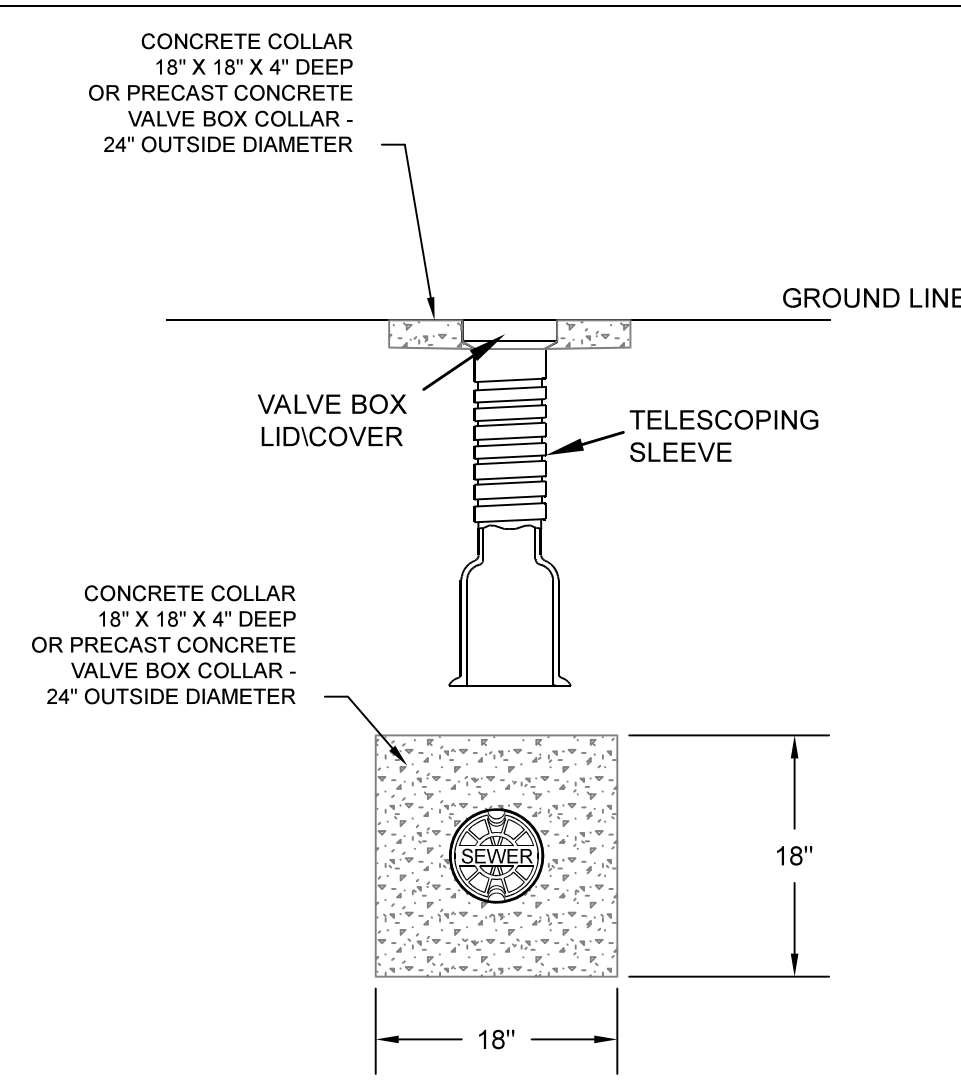
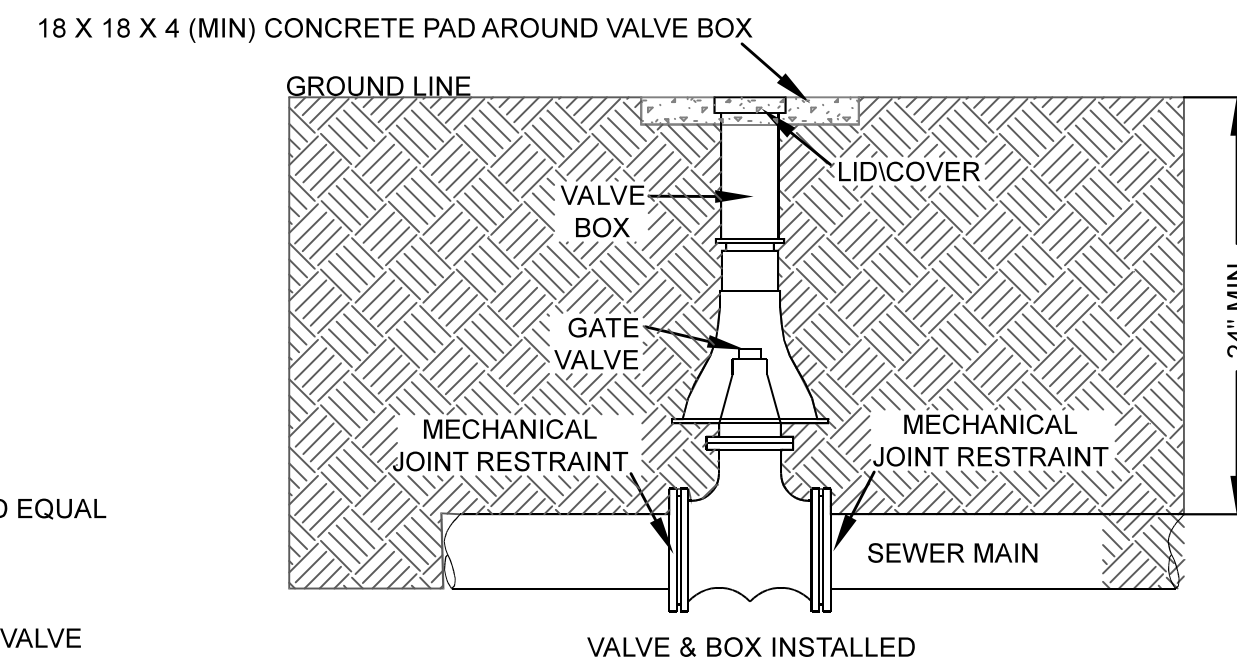
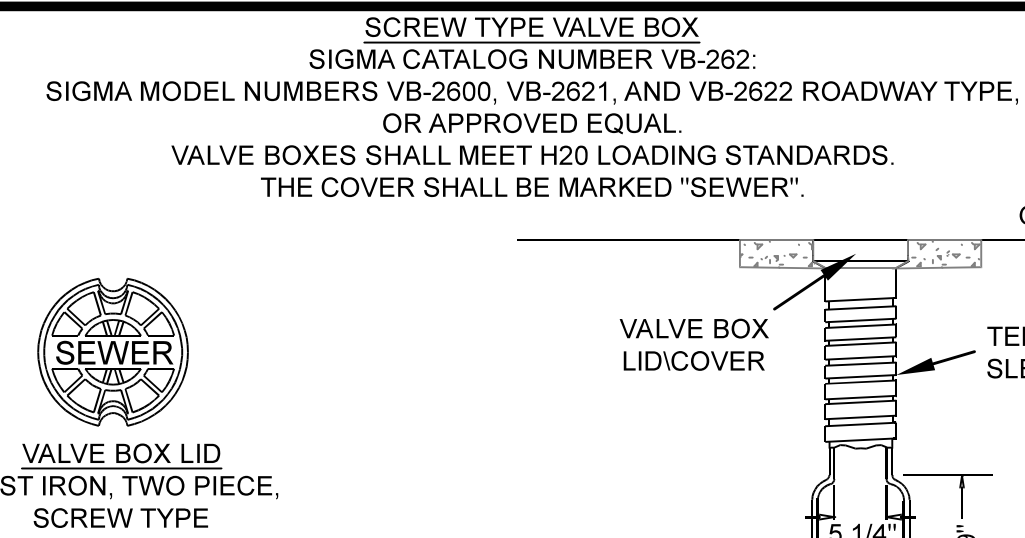


M. J. PLUG



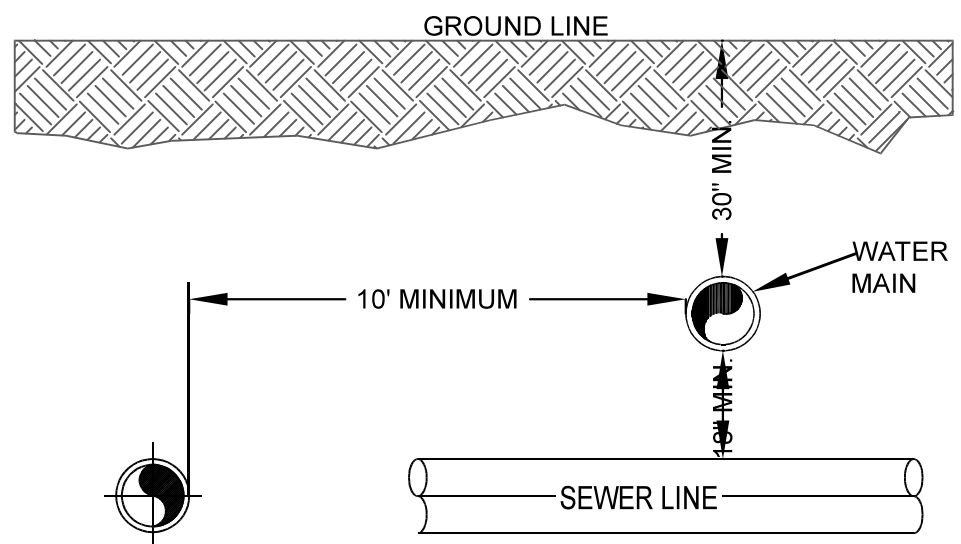
- NOTES:
- GATE VALVES SHALL BE (AWWA STANDARD C515) MUELLER, AMERICAN SERIES 2500-1, OR APPROVED EQUAL. FOR SIZES UP TO 12 INCHES
  - TAPPING SLEEVES SHALL BE MUELLER H-615 OR APPROVED EQUAL.
  - TAPPING VALVES SHALL BE MUELLER T-2360-16, AMERICAN SERIES 2500-1, OR APPROVED EQUAL FOR SIZES UP TO 12 INCHES
  - BUTTERFLY VALVES SHALL BE USED FOR SIZES 14 INCHES OR LARGER, MUELLER H-667 FOR 14 INCH THROUGH 24 INCH OR APPROVED EQUAL.
  - WHENEVER A SEWER VALVE IS ADJACENT TO A M. J. TEE IN THE SEWER LINE THE SEWER VALVE SHALL BE ATTACHED TO THE TEE USING RODDING OR ALL THREAD.
  - ALL GATE VALVES SHALL BE RESILIENT WEDGE TYPE.
  - ALL VALVES SHALL HAVE A 18 X 18 X 4 (MIN) CONCRETE PAD AROUND THE VALVE BOX.
  - 2500 PSI CONCRETE (MINIMUM) SHALL BE USED FOR PAD/COLLAR.
  - THE VALVE BOX AND LID SHALL BE INCLUDED IN THE PRICE OF THE VALVE.

**VALVE & VALVE BOX**  
NOT TO SCALE



**CONCRETE VALVE BOX COLLAR**  
NOT TO SCALE

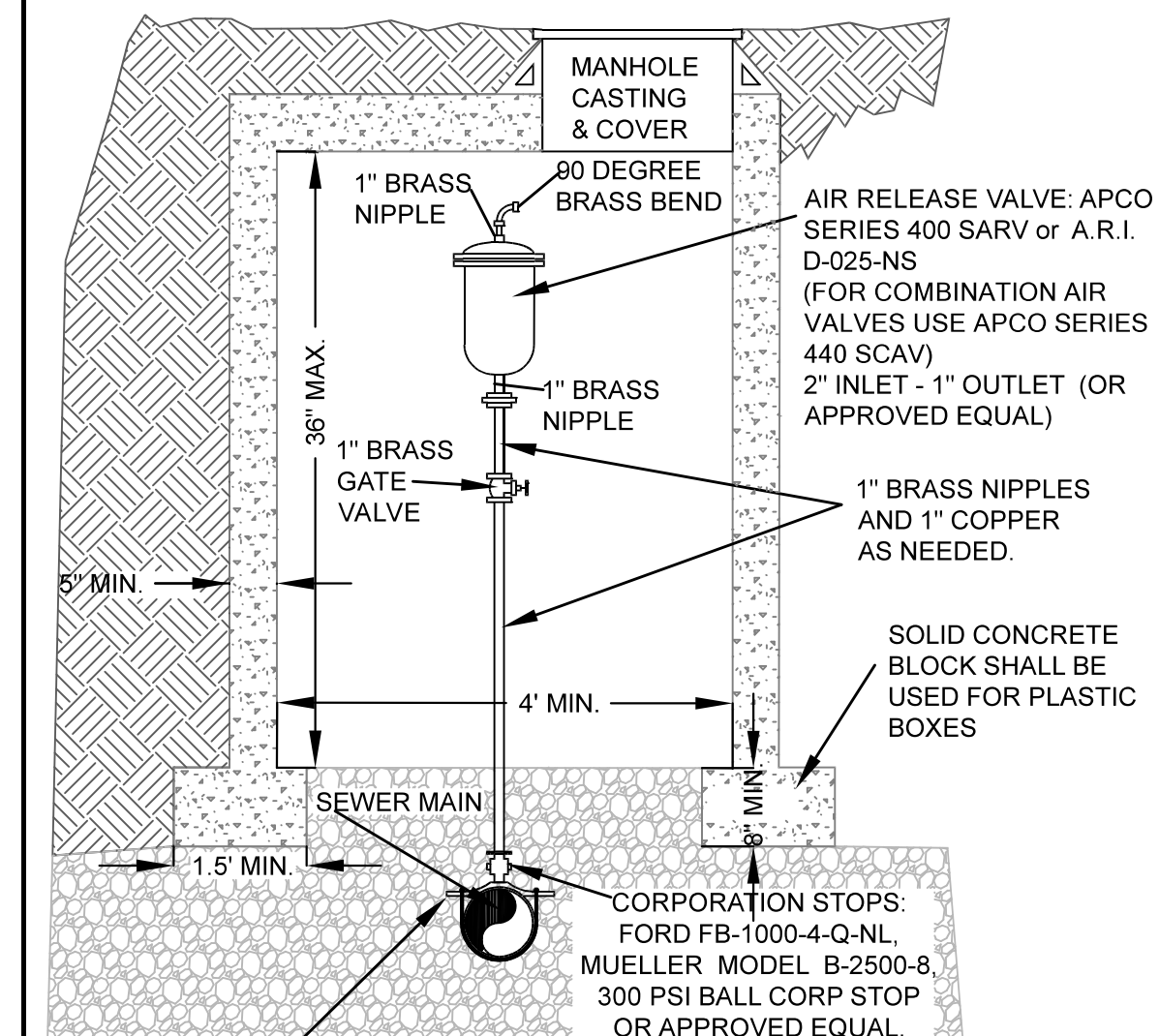
NOTE:  
PRECAST CONCRETE VALVE BOX COLLAR WITH A 24 INCH OUTSIDE DIAMETER IS APPROVED EQUAL.  
CONCRETE COLLARS TO BE INSTALLED AROUND VALVE BOXES LOCATED OUTSIDE OF PAVED AREAS UNLESS NOTED OTHERWISE ON THE PLANS.



- NOTES:
- IF THE SEWER MAIN OR SEWER SERVICE LINE CROSSES ON TOP OF THE WATER MAIN IT SHALL BE ENCASED A MINIMUM OF 5' ON EACH SIDE OF THE WATER MAIN. ALTERNATE CASING PIPE TYPES (STEEL, PVC, HDPE, DIP, ETC) ARE ALLOWED ON CITY STREETS AND COUNTY ROADS, BUT THEY MUST BE PRE-APPROVED IN WRITING BY THE CITY ENGINEERING DEPARTMENT PRIOR TO BEING INSTALLED IN THE TRENCH. THE CASING PIPE SHALL MEET OR EXCEED THE WALL THICKNESS AND PSI RATING OF PVC SDR 21 (CLASS 200) PIPE.

**SEPARATION OF PIPED UTILITIES**  
NOT TO SCALE

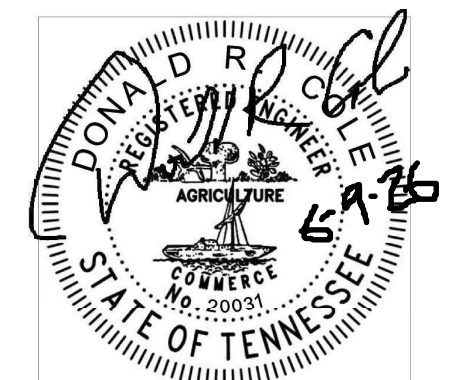
USE PRECAST MANHOLE SECTION W/FLAT TOP OR AN APPROVED PLASTIC BOX.  
**BOXES MUST BE PRE-APPROVED IN WRITING BY THE CITY ENGINEERING DEPARTMENT PRIOR TO INSTALLATION**



**AIR RELEASE VALVE ASSEMBLY**  
NOT TO SCALE

- NOTES:
- A 1" VALVE IS REQUIRED ON 8" AND SMALLER SEWER MAINS, & A 2" VALVE IS REQUIRED ON 10" AND LARGER SEWER MAINS.
  - SOLID CONCRETE CAP BLOCKS MAY BE USED AT THE BOTTOM OF THE BOX TO ADJUST HEIGHT IF NEEDED.
  - AN AIR RELEASE VALVE ASSEMBLY SHALL CONSIST OF ALL FITTINGS, PIPING, TAPPING SADDLE, CORPORATION STOP, VALVE, GRAVEL, AIR RELEASE, AND MANHOLE OR BOX. AIR RELEASE ASSEMBLIES SHALL BE PAID AS A LUMP SUM ITEM.

TAPPING SADDLES: FORD - DOUBLE STRAP MODEL FC202SMITH BLAIR - DOUBLE STRAP MODEL #313, OR ROMAC - MODEL # 202U OR APPROVED EQUAL.



**CITY OF CROSSVILLE  
ENGINEERING DEPARTMENT**  
392 N MAIN ST  
CROSSVILLE, TN 38655  
PHONE: (931) 484-5113  
FAX: (931) 484-7713

**DETAIL SHEET  
LOW PRESSURE SEWER**

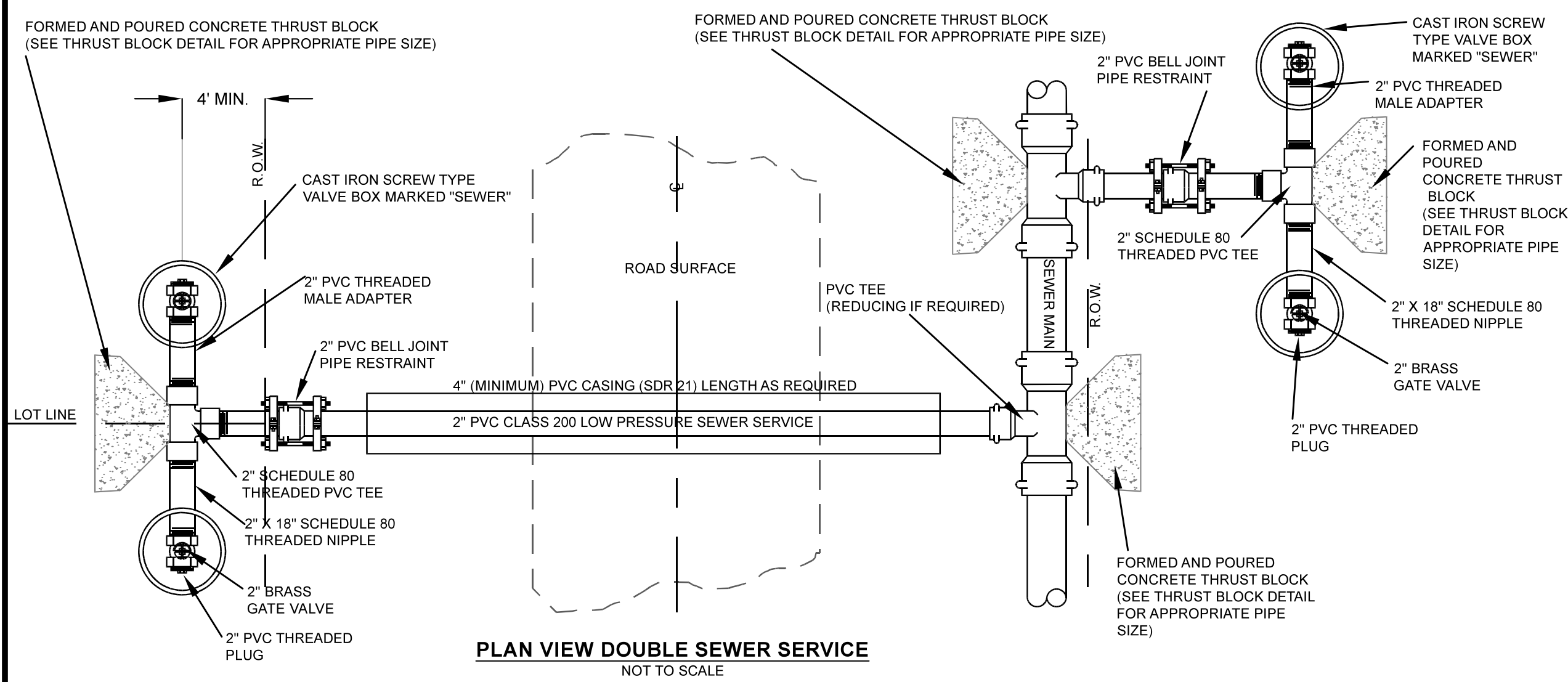
NO.	DATE	REVISION DESCRIPTION

FILE NAME:  
DETAIL SHEET  
GRAVITY SEWER  
DRAWN BY: DRC  
CHECKED BY: TB

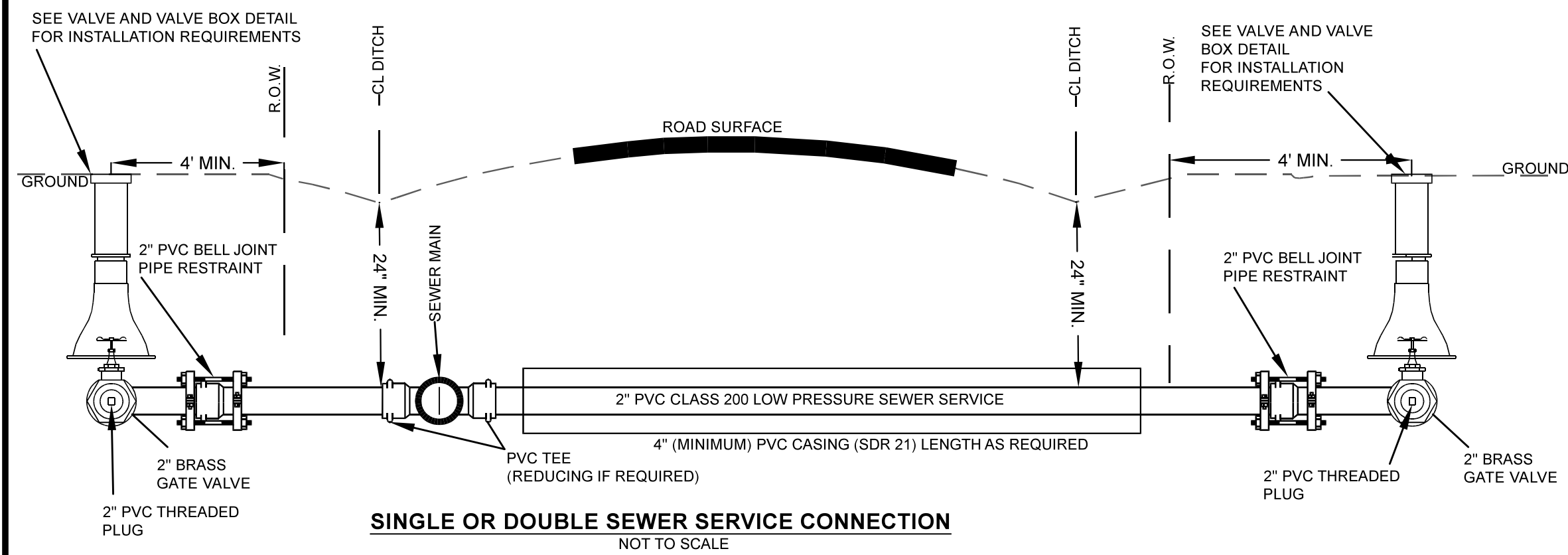
DATE: 4/2026  
PROJECT NO.:

SHEET NO.  
1 OF 4

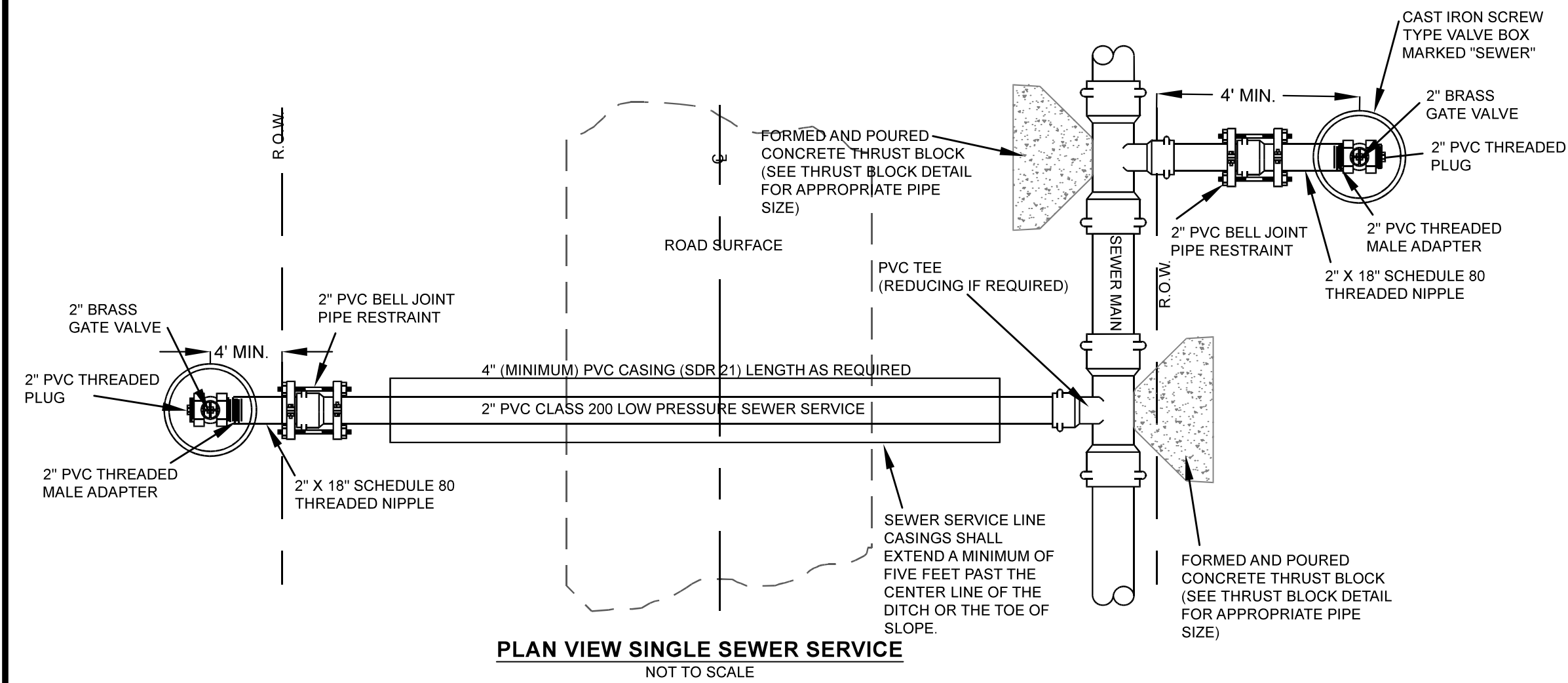
SHEET TITLE  
DETAIL SHEET



**PLAN VIEW DOUBLE SEWER SERVICE**  
NOT TO SCALE



**SINGLE OR DOUBLE SEWER SERVICE CONNECTION**  
NOT TO SCALE



**PLAN VIEW SINGLE SEWER SERVICE**  
NOT TO SCALE

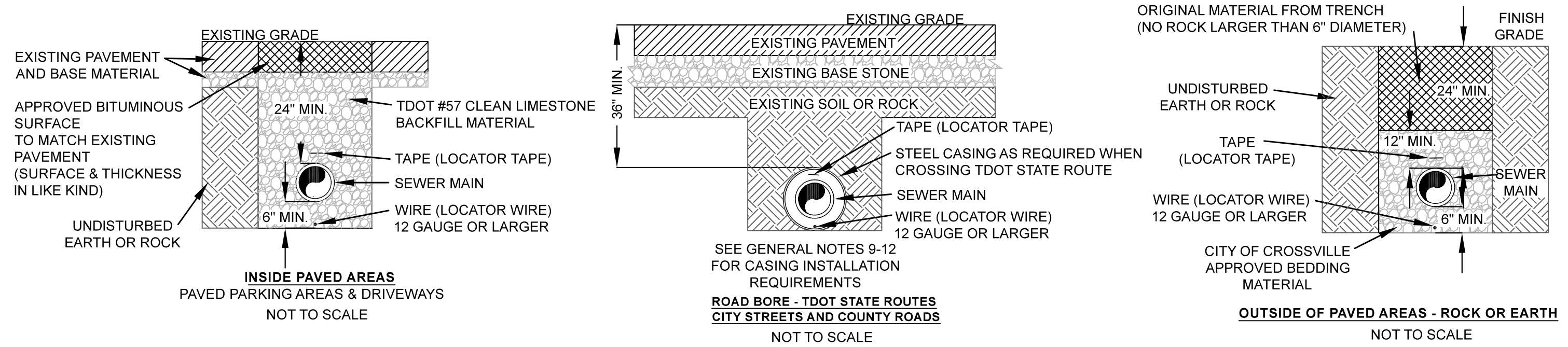
**ALTERNATIVE SEWER SERVICE PIPING:**

2" HDPE PIPE WITH A FUSED ON STANDARD MALE NPT TRANSITION FITTING FROM HDPE PIPE TO STAINLESS STEEL PIPE THREAD ON BOTH ENDS OF PIPE. CONNECT TO THREADED TEE OR SADDLE ON ONE END OF PIPE AND BRASS GATE VALVE OR THREADED TEE ON OTHER END OF PIPE

**SEWER SERVICE CROSSING NOTES:**

- SEWER SERVICE LINE CASINGS SHALL EXTEND A MINIMUM OF 5' PAST THE CENTER LINE OF THE DITCH OR THE TOE OF THE SLOPE. WHERE THE SEWER MAIN IS CLOSER THAN 5' TO THE DITCH OR TOE OF SLOPE THE CASING SHALL BE WITHIN 2' OF THE SEWER MAIN.
- ON CURB AND GUTTER STREETS THE CASING SHALL EXTEND A MINIMUM OF 3' BEHIND THE BACK OF THE CURBS OR THE RIGHT OF WAY SIDE OF THE SIDEWALKS.
- ALL SEWER SERVICES EXTENDING UNDER ROADWAYS SHALL BE ENCASED AS REQUIRED.
- ALL CASINGS SHALL BE A MINIMUM OF 36" DEEP FROM TOP OF THE CASING PIPE TO CENTER LINE OF THE DITCH ON STATE ROUTES.
- TRACER WIRE AND LOCATOR TAPE SHALL BE INSTALLED FOR ALL SEWER SERVICE STREET/ROAD/HIGHWAY CROSSINGS INSTALLED BY OPEN CUTTING.
- THE CASING PIPE SHALL MEET OR EXCEED THE WALL THICKNESS AND PSI RATING OF PVC SDR 21 (CLASS 200) PIPE.

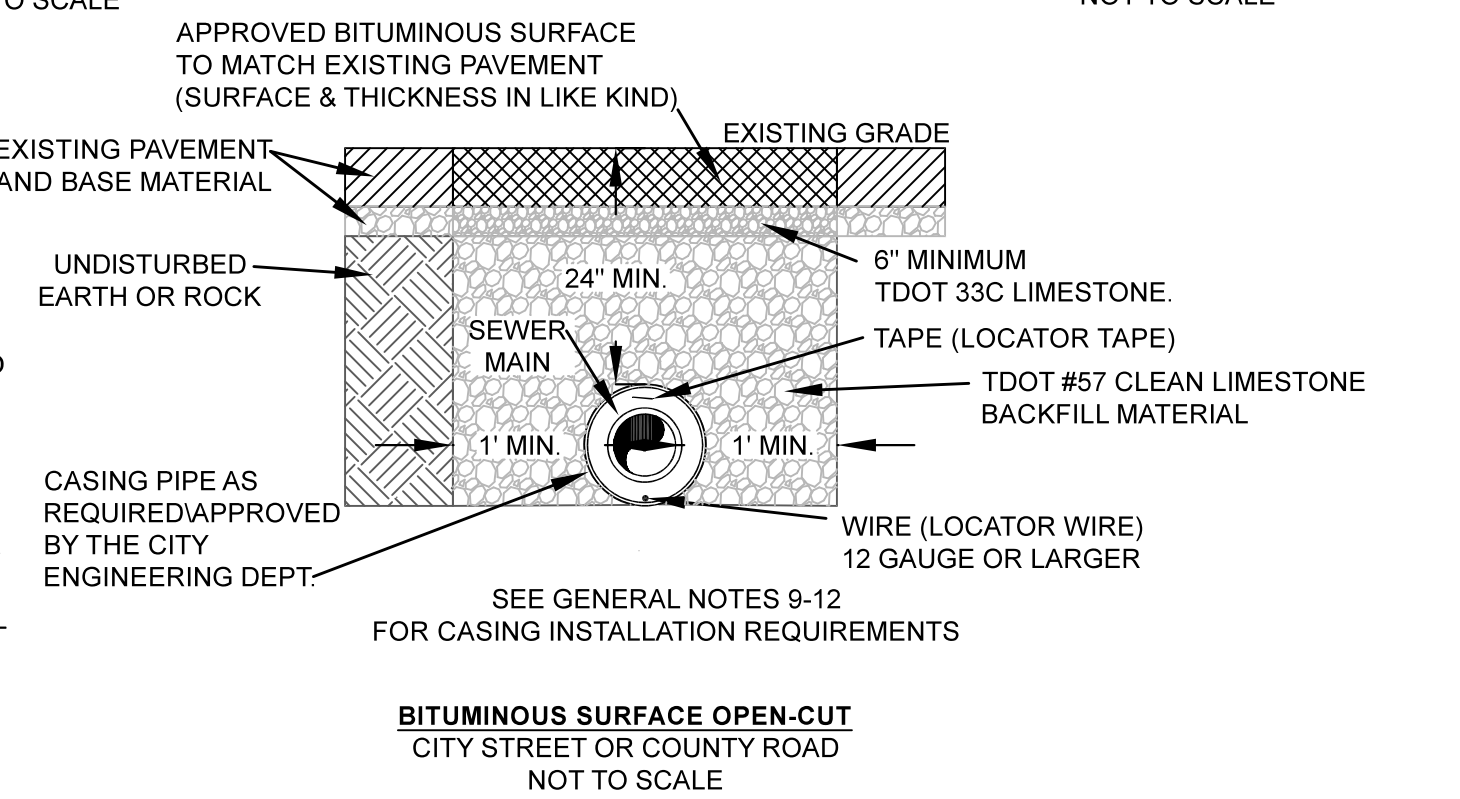
**SEWER SERVICE CONNECTIONS**  
NOT TO SCALE



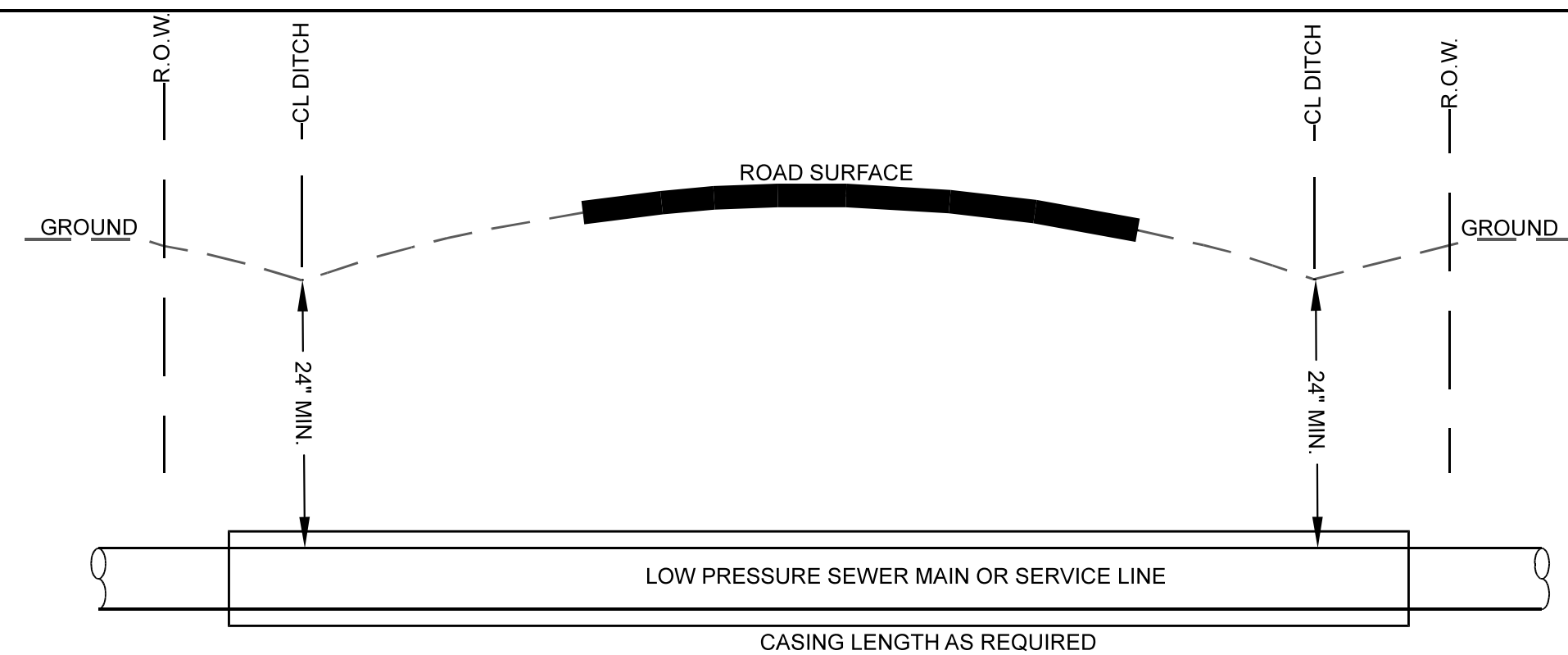
**TRENCH AND BACKFILL SECTION**

**NOTES:**

- 2" (MINIMUM) WIDTH METALIC LOCATOR TAPE LABELED "SEWER" SHALL BE PLACED IN THE TRENCH 6" - 8" ABOVE THE SEWER MAIN OR SEWER SERVICE LINE.
- LOCATOR WIRE: SHALL BE COLORED GREEN, 12 GAUGE OR LARGER SOLID WIRE, AND BE PLACED IN THE BOTTOM OF THE PIPE TRENCH.
- ALL BACKFILL MATERIAL MUST BE PRE-APPROVED IN WRITING BY THE CITY ENGINEERING DEPARTMENT PRIOR TO BEING PLACED IN THE TRENCH.
- ALTERNATE CASING PIPE TYPES (PVC, HDPE, DIP, ETC) ARE ALLOWED ON CITY STREETS AND COUNTY ROADS, BUT THEY MUST BE PRE-APPROVED IN WRITING BY THE CITY ENGINEERING DEPARTMENT PRIOR TO BEING INSTALLED IN A TRENCH OR BORE.
- BITUMINOUS COATED STEEL CASINGS ARE REQUIRED WHEN CROSSING STATE ROUTES, (36" MINIMUM DEPTH).
- TRENCH WIDTHS WHERE ROCK IS ENCOUNTERED SHALL BE A MINIMUM WIDTH OF 2' PLUS THE DIAMETER OF THE SEWER MAIN.
- CASING PIPE SHALL MEET OR EXCEED THE WALL THICKNESS AND PSI RATING OF PVC SDR 21 (CLASS 200) PIPE.
- ALL SEWER MAINS (EXCLUDING THOSE IN A CASING) SHALL HAVE A MINIMUM OF 6" OF BEDDING BELOW, ON EACH SIDE IN SOIL (WITH A MINIMUM OF 12" ON EACH SIDE IN ROCK), AND 12" OF BEDDING ABOVE THE SEWER MAIN. ALL BEDDING MATERIAL SHALL BE FREE OF ROCK LARGER THAN 2" DIAMETER AND ORGANIC DEBRIS, AND SHALL BE INSTALLED IN 6" WELL COMPACTED LIFTS. NO ROCK LARGER THAN 6" IN DIAMETER SHALL BE USED AS BACKFILL IN THE REMAINDER OF THE TRENCH.



**BITUMINOUS SURFACE OPEN-CUT**  
CITY STREET OR COUNTY ROAD  
NOT TO SCALE

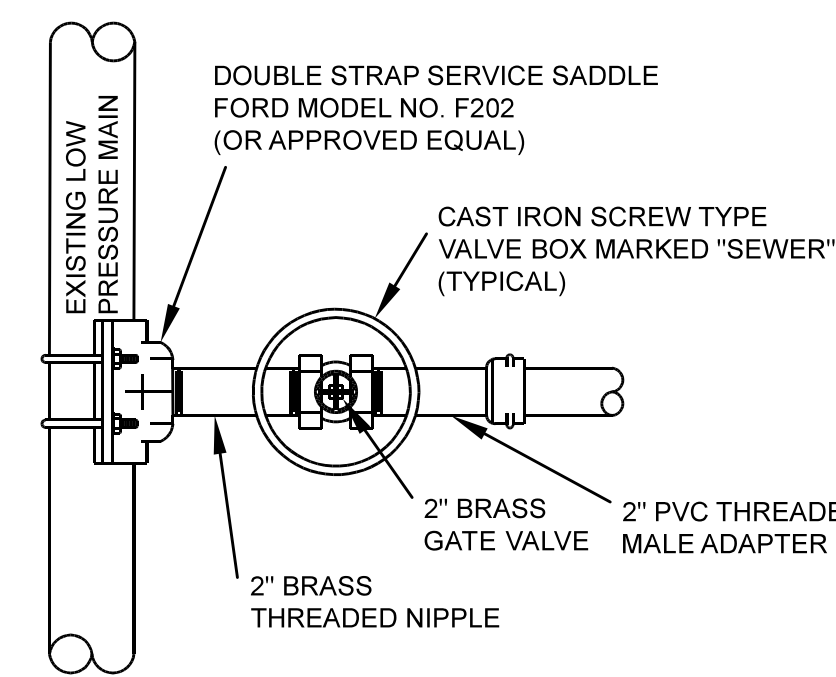


WATER MAIN

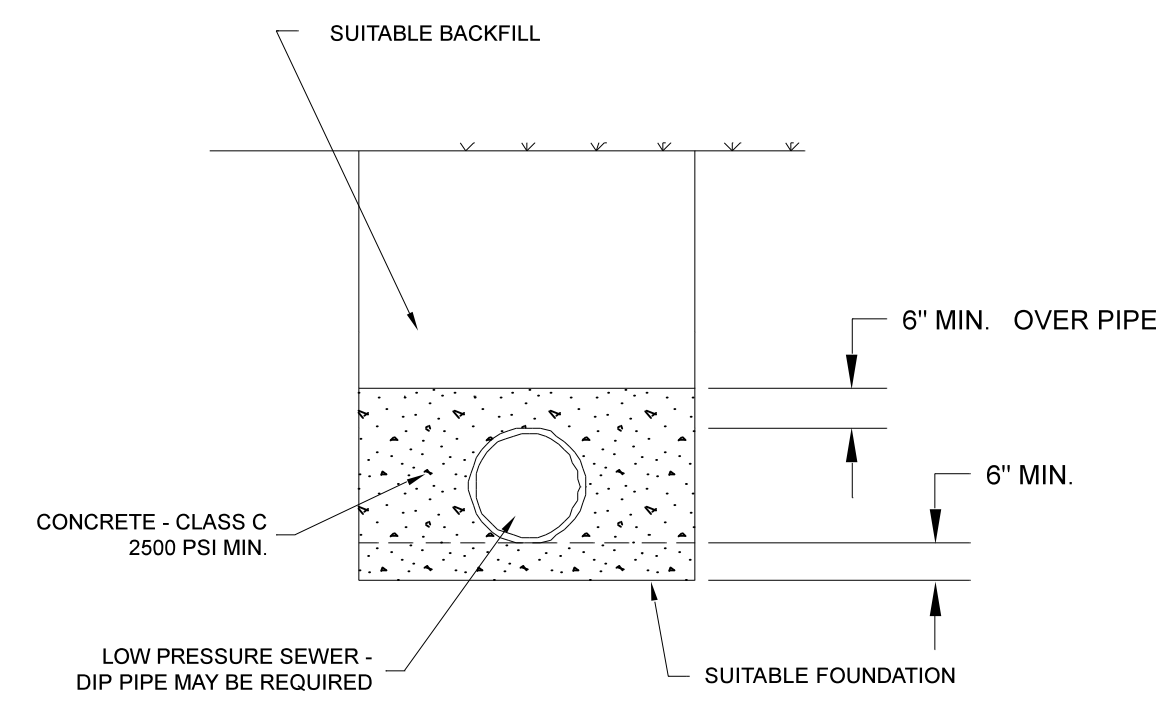
**SEWER ROAD CROSSING NOTES:**

- SEWER MAIN AND SERVICE LINE CASINGS SHALL EXTEND A MINIMUM OF 5' PAST THE CENTER LINE OF THE DITCH OR THE TOE OF SLOPE.
- SEWER MAIN AND SERVICE LINE CASINGS SHALL EXTEND A MINIMUM OF 5' PAST THE OFFSIDE WATER MAIN OR HAVE A MINIMUM OF 18" OF SEPARATION (VERTICALLY) BETWEEN THE WATER AND SEWER MAINS (INCLUDING SEWER SERVICES).
- ALL SEWER MAINS OR SERVICES EXTENDING UNDER ROADWAYS SHALL BE ENCASED.
- ALL CASINGS SHALL BE A MINIMUM OF 36" FROM TOP OF THE CASING PIPE TO CENTER LINE OF THE DITCH ON STATE ROUTES.
- ON CURB AND GUTTER STREETS THE CASING SHALL EXTEND A MINIMUM OF 3' OUTSIDE THE EDGE OF PAVEMENT OR THE RIGHT OF WAY SIDE OF THE SIDEWALKS.
- TRACER WIRE AND LOCATOR TAPE SHALL BE INSTALLED FOR ALL SEWER LINE ROAD CROSSINGS INSTALLED BY OPEN CUTTING.
- THE CASING PIPE SHALL MEET OR EXCEED THE WALL THICKNESS AND PSI RATING OF PVC SDR 21 (CLASS 200) PIPE.

**TYPICAL CITY/COUNTY ROAD CROSSING**  
NOT TO SCALE



**SERVICE CONNECTION TO EXISTING MAIN**  
WET TAP  
NO SCALE



**CONCRETE ENCASEMENT**  
STREAM OR DITCH CROSSINGS  
NTS

NOTE: VALVE ON BOTH SIDES OF STREAM OR DITCH CROSSING MAY BE REQUIRED.

**CITY OF CROSSVILLE**  
**ENGINEERING DEPARTMENT**  
392 N MAIN ST  
CROSSVILLE, TN 38655  
PHONE: (931) 484-5113  
FAX: (931) 484-7713

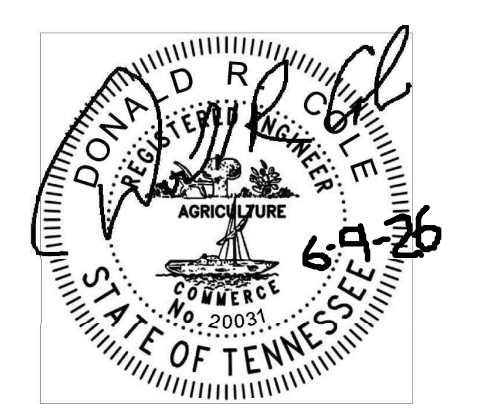
**DETAIL SHEET**  
**LOW PRESSURE SEWER**

NO.	DATE	REVISION DESCRIPTION

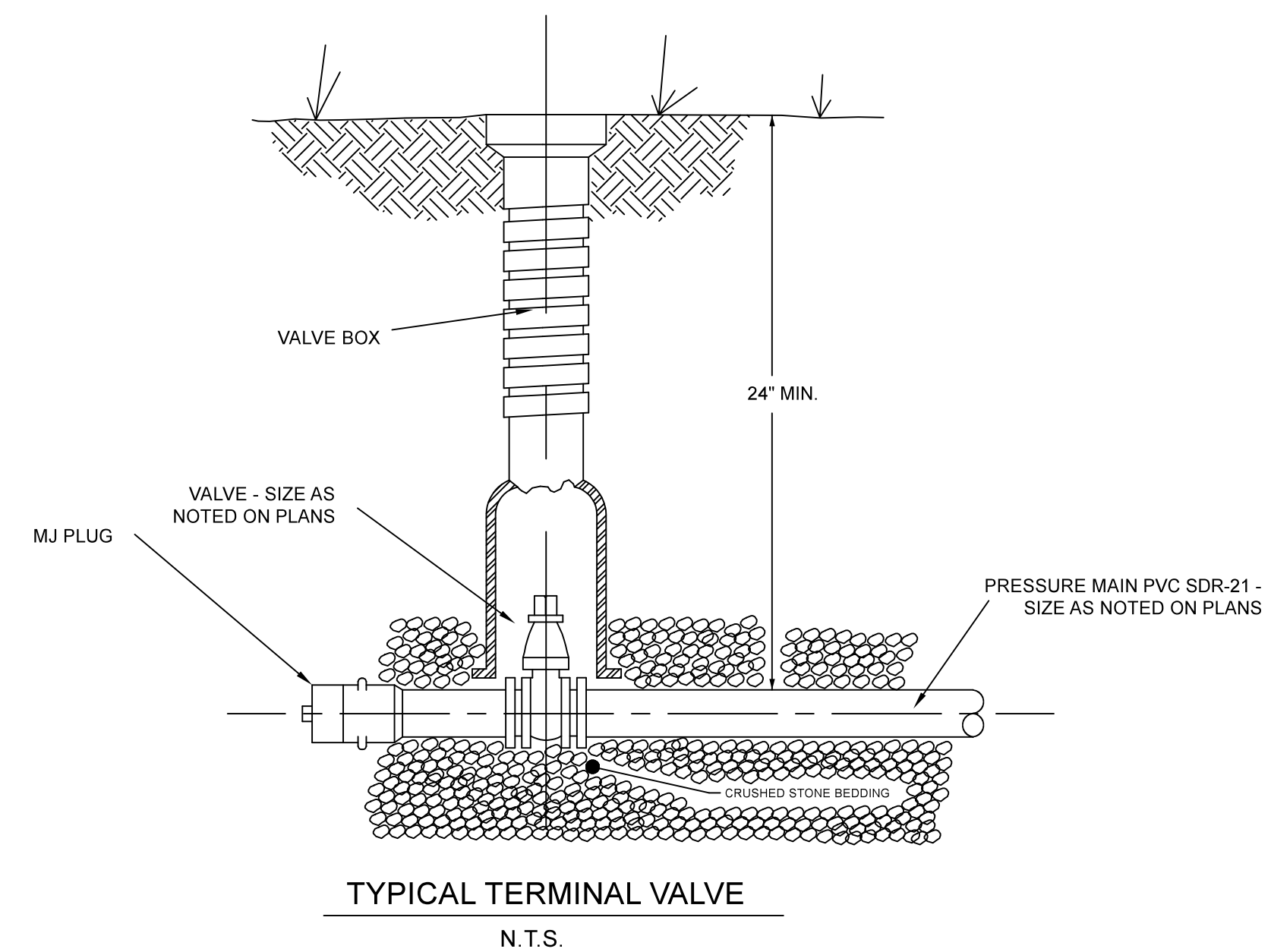
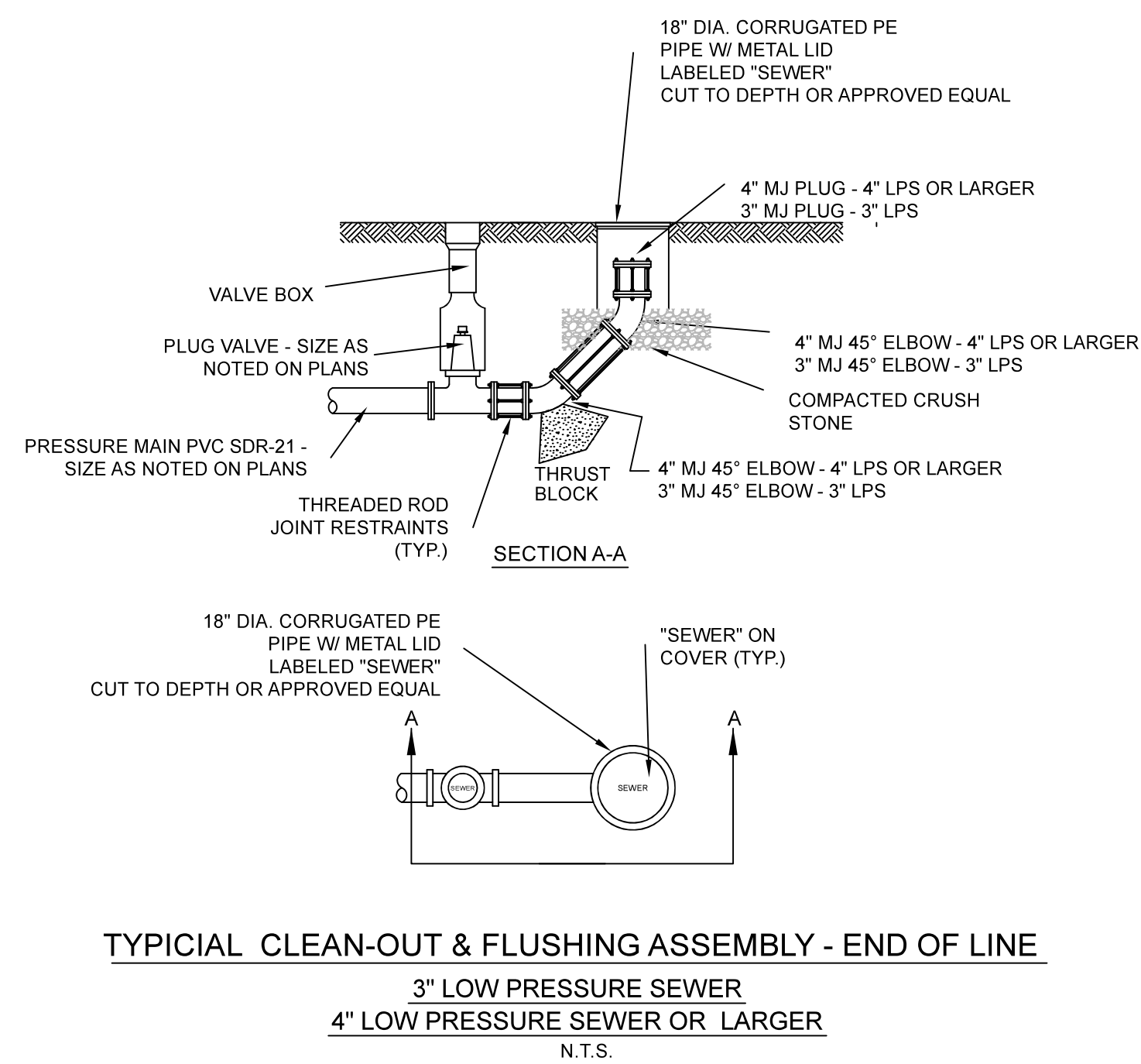
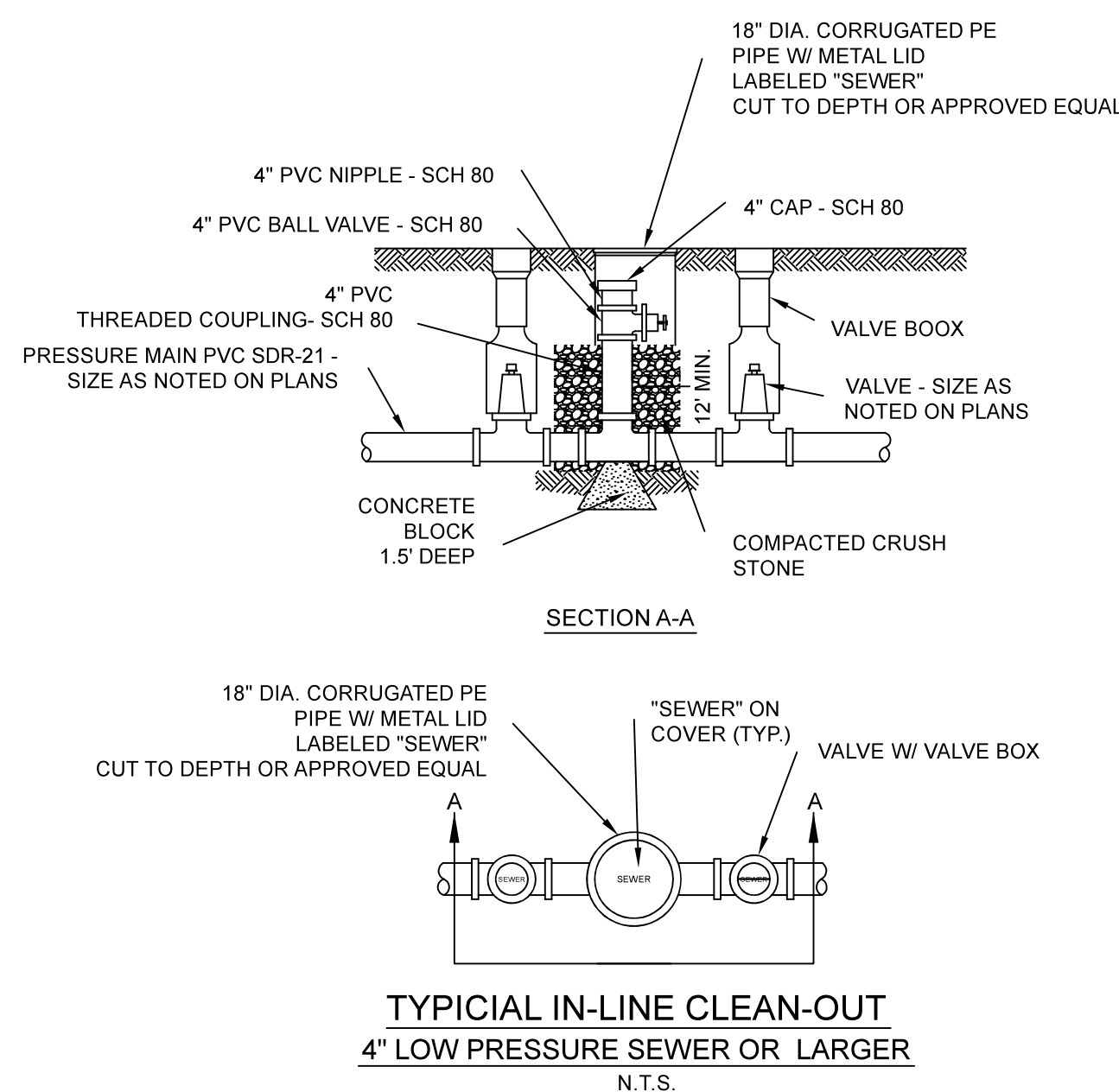
FILE NAME:  
DETAIL SHEET  
GRAVITY SEWER  
DRAWN BY: DRC  
CHECKED BY: TB  
DATE: 4/2026  
PROJECT NO.:

**SHEET NO.**  
**2 OF 4**

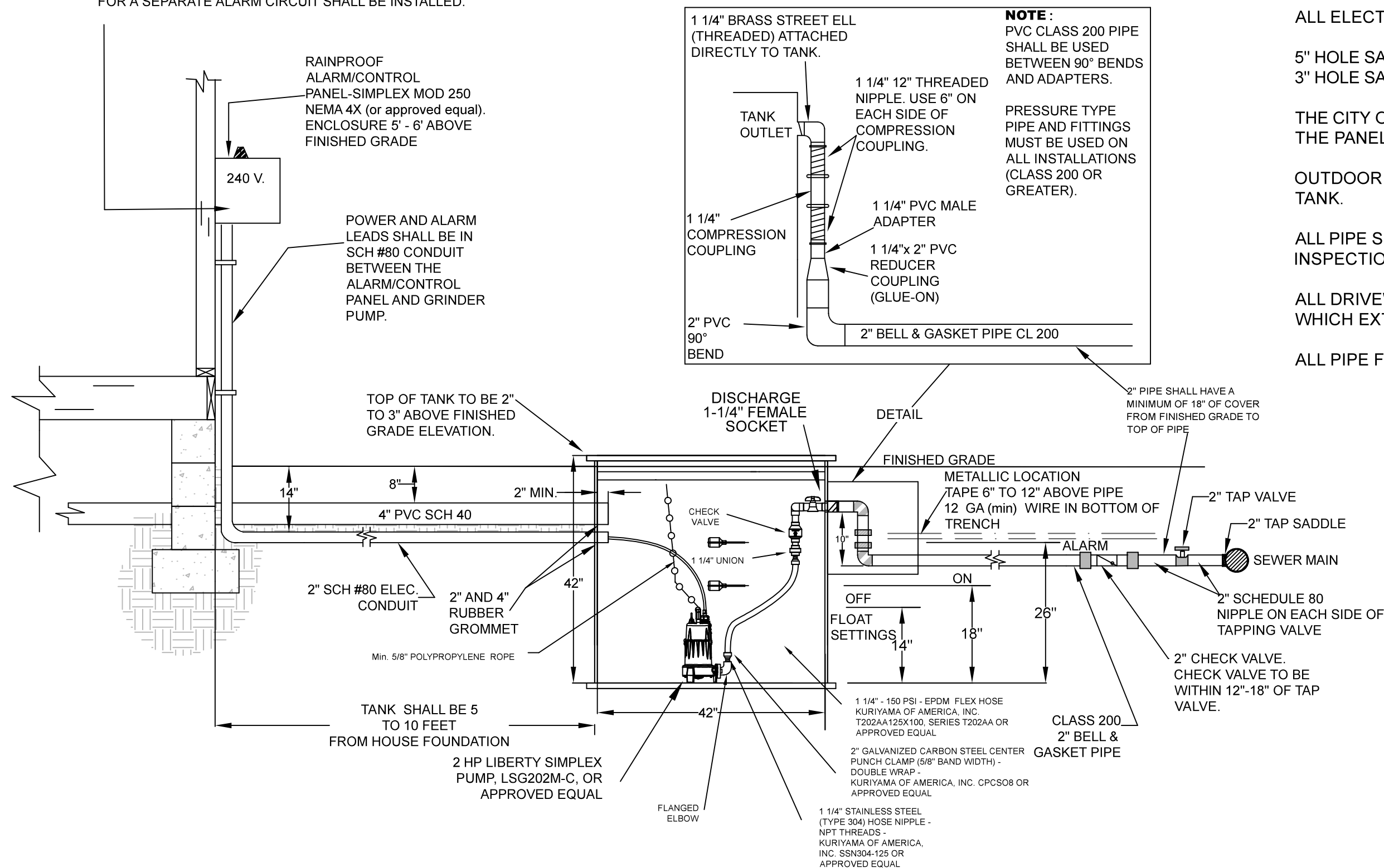
**SHEET TITLE**  
**DETAIL SHEET**



**DETAIL SHEET  
LOW PRESSURE SEWER**



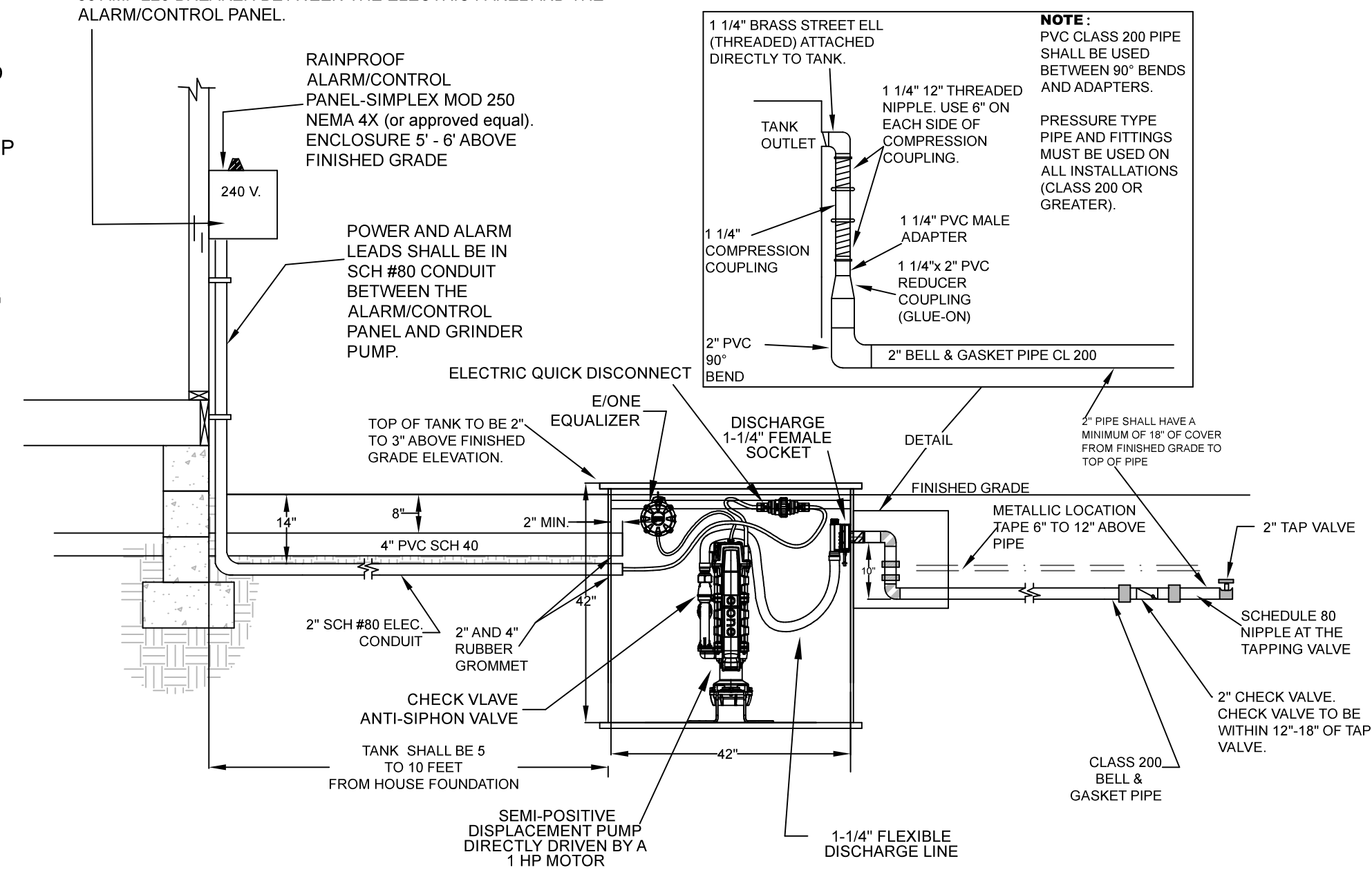
PANEL SHALL BE POWERED BY 10-2 WIRE WITH GROUND AND A 30 AMP 220 BREAKER BETWEEN THE ELECTRIC PANEL AND THE ALARM/CONTROL PANEL.  
ALSO A DEDICATED 15 OR 20 AMP, 120 VOLT POWER SUPPLY FOR A SEPARATE ALARM CIRCUIT SHALL BE INSTALLED.



**NOTES:**

- ALL ELECTRIC SHALL MEET STATE ELECTRICAL CODES
- 5" HOLE SAW NEEDED FOR 4" PVC HOLE  
3" HOLE SAW NEEDED FOR 2" PVC CONDUIT HOLE
- THE CITY OF CROSSVILLE WILL CONNECT THE WIRES FROM THE PUMP TO THE PANEL
- OUTDOOR WATER FAUCET TO BE AVAILABLE WITHIN 25' OF GRINDER PUMP TANK.
- ALL PIPE SHALL BE UNCOVERED AND VISIBLE FOR THE PRELIMINARY INSPECTION BY THE CITY REPRESENTATIVE.
- ALL DRIVEWAY CROSSINGS SHALL HAVE A SCHEDULE 40 - 4" PVC CASING WHICH EXTENDS A MINIMUM OF 2' BEYOND EDGE OF DRIVEWAY.
- ALL PIPE FITTING BENDS SHALL HAVE A CONCRETE KICKER

PANEL SHALL BE POWERED BY 10-3 WIRE WITH GROUND AND A 30 AMP 220 BREAKER BETWEEN THE ELECTRIC PANEL AND THE ALARM/CONTROL PANEL.

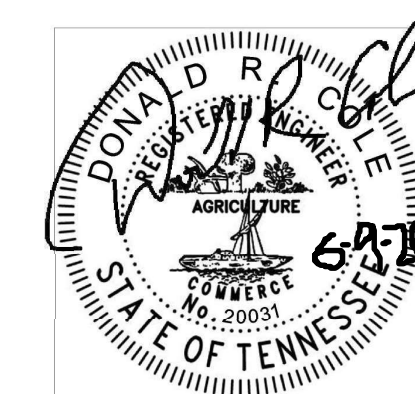


**TYPICAL GRINDER PUMP INSTALLATION**  
**E/ONE PUMP OR APPROVED EQUAL**

E/ONE EXTREME SERIES  
GRINDER PUMP  
OR APPROVED EQUAL

MOTOR:  
1 HP, 1725 RPM, 240 V, 1 PHASE

DISCHARGE:  
15 gpm at 0 psig  
11 gpm at 40 psig  
7.8 gpm at 80 psig



NO.	DATE	REVISION DESCRIPTION

FILE NAME:  
DETAIL SHEET  
GRAVITY SEWER  
DRAWN BY: DRC  
CHECKED BY: TB  
DATE: 4/2026  
PROJECT NO.:

SHEET NO.  
3 OF 4  
SHEET TITLE  
DETAIL SHEET

