



PROJECT PROPOSAL PRESENTATION

# 2024 RTP APPLICATION

Meadow Park Lake

Connectivity Improvements

# CENSUS POPULATION

2022 AMERICAN COMMUNITY SURVEY ESTIMATES

## Crossville

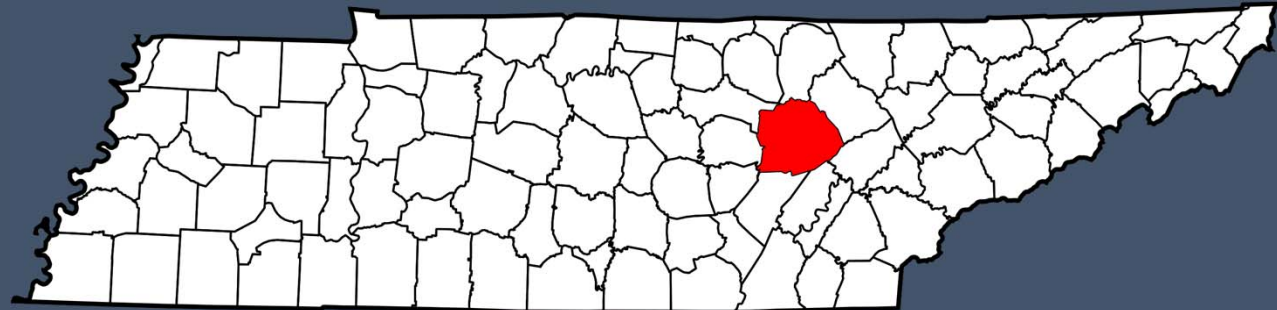
- Total Population: 12,099
- Total Households: 5,323



Crossville is located in  
Cumberland County.

## Cumberland County

- Total Population: 61,552
- Total Households: 26,931



<https://censusreporter.org/profiles/16000US4718540-crossville-tn/>

# RECREATIONAL ACREAGE

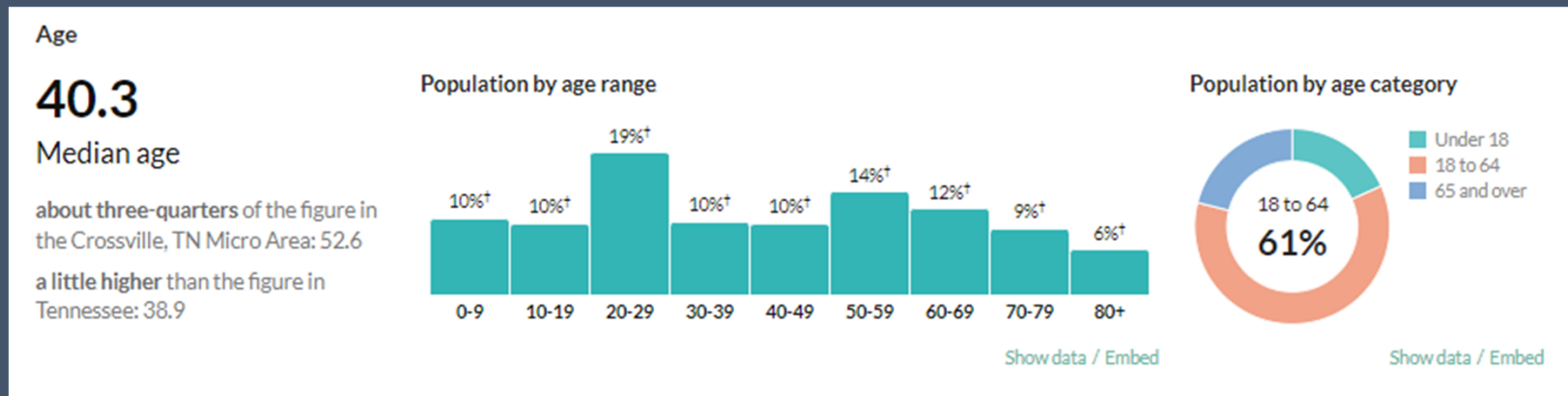
Meadow Park Lake has nearly

**2,200 acres**

of land and lake dedicated to  
recreational use

# TARGET DEMOGRAPHICS

- Proposed improvements at the Meadow Park Lake will continue to make the park available to all persons, regardless of age, gender, race, economic status, or possible disability.
- The proposed improvements and upgraded park can be used by all ages.



# PUBLIC RECREATION ACTIVITIES/ PROGRAMS ENVISIONED AT MEADOW PARK LAKE



## Proposed:

- Development of a trailhead facility where Soldier's Trail and North Trail begin. This includes an ADA compliant restrooms, an informational kiosk, and support accessories such as bike racks, a drinking/filling fountain, and a dog watering station.
- A new parking lot with American with Disabilities Act (ADA) Parking

## Existing:

- Miles of hiking trails, disc golf course, marina, campground, cabin rentals, playground, and pavilion.

# POSITIVE COMMUNITY IMPACT

- Addresses the number one need, interest, and priority the community detailed during the Cumberland County 2023 Parks & Recreation Master Planning process.
- Improve public health by providing an additional trail and support facilities that encourage outdoor physical activity.
- Upgrades and additions to existing park & facilities to promote continued use.



# GOAL OF PROJECT

- Address the public's wishes, needs, and priorities as outlined in the System-Wide Parks & Recreation Master Plan
- Improve access within Meadow Lake Park.
- Development of a trailhead facility where Soldier's Trail and North Trail begin. The trailhead facility will consist of ADA compliant restrooms, an informational kiosk, and support accessories such as bike racks, a drinking/filling fountain, and a dog watering station.
- A new parking lot for the facility will be constructed, which will include ADA compliant parking.
- A crosswalk with pedestrian signalization will be included across the main park entrance road connecting to an existing parking lot.

# MEANS & FUNDING FOR DEVELOPMENT

- TDEC Parks and Recreation Grant Funding – 80%
- Remaining Cash Match from City of Crossville – 20%



# SUITABILITY, LOCATION, & TOPOGRAPHY FOR DEVELOPMENT OF PROJECT

- Located at existing Meadow Park Lake
- Proposed trail will wind along an underground utility easement.
- There is space to add the proposed features at the Park while maintaining adequate open spaces
- All proposed new facilities will be constructed in the most suitable locations for ADA accessibility and where minimal site work and grading will be necessary.

# SITE DEVELOPMENT

- The proposed project addresses park needs identified in the Master Plan
- This project will provide ADA compliant facilities for existing trails that are heavily utilized. This will include ADA parking, and restroom facilities.

# PROGRAMMING PLANS FOR SITE

## Meadow Park Lake

- Proposed:
  - Additional Trail Development
  - ADA Compliant Restroom
  - Trailhead accessories
- Existing:
  - Hiking Trails
  - Picnics and Community Events
  - Marina
  - General Recreation

# STATE COMPREHENSIVE RECREATION PLAN

## GOAL: ADVOCACY & FUNDING

- Crossville advocates for parks and recreation by pursuing projects that improve connectivity and access. The proposed project enhances connectivity within Meadow Park by working to expand and maintain the park for the citizens of Crossville and surrounding areas. The development of these year-round trails comes at a perfect time, as nearly half of adults from across the United States now participate in outdoor recreation on at least a monthly basis.

# STATE COMPREHENSIVE RECREATION PLAN

## GOAL: LOCAL PARKS & RECREATION

- Crossville is dedicated in providing recreational facilities and programs to the citizens of the city and surrounding areas. The proposed LPRF project will expand the recreational opportunities by making upgrades at the City's heavily utilized existing park. An assortment of facilities allow for walking/hiking, picnics and other group gatherings, youth playground facilities, general recreation, boating and fishing.

# STATE COMPREHENSIVE RECREATION PLAN GOAL: CONSERVATION & EDUCATION

- Meadow Park Lake provides a variety of outdoor educational opportunities for the citizens of Crossville. The proposed trailhead accessories and updated parking lot will provide facilities to users that are utilizing the park for outdoor activities. There are numerous opportunities provided at Meadow Park Lake for families with young children, troops and school groups; thereby creating an excellent means of outdoor education and environmental awareness.

# STATE COMPREHENSIVE RECREATION PLAN

## GOAL: INCLUSIVITY, DIVERSITY, EQUITY, ACCESS, AFFORDABILITY

- Crossville understands that parks and recreational facilities are crucial for resident quality of life. By supporting the growth of parks and recreation, Crossville strengthens its commitment to recreational opportunities and the economic well-being of the community. Applying for LPRF funds will allow the city to stretch its parks and recreation budget further, bridging the gap needed to make these vital improvements, including ensuring inclusivity with ADA-compliant access within the park itself.



# PROJECT DESIGN ELEMENTS

## COMMUNITY PARK

### Use of Site

- Proposed development of park with support facilities:
  - ADA compliant restrooms and parking
  - An informational kiosk
  - Support accessories such as bike racks, a drinking/filling fountain, and a dog watering station.
  - A crosswalk with pedestrian signalization at main park entrance connecting to existing parking lot.
  - A new parking lot

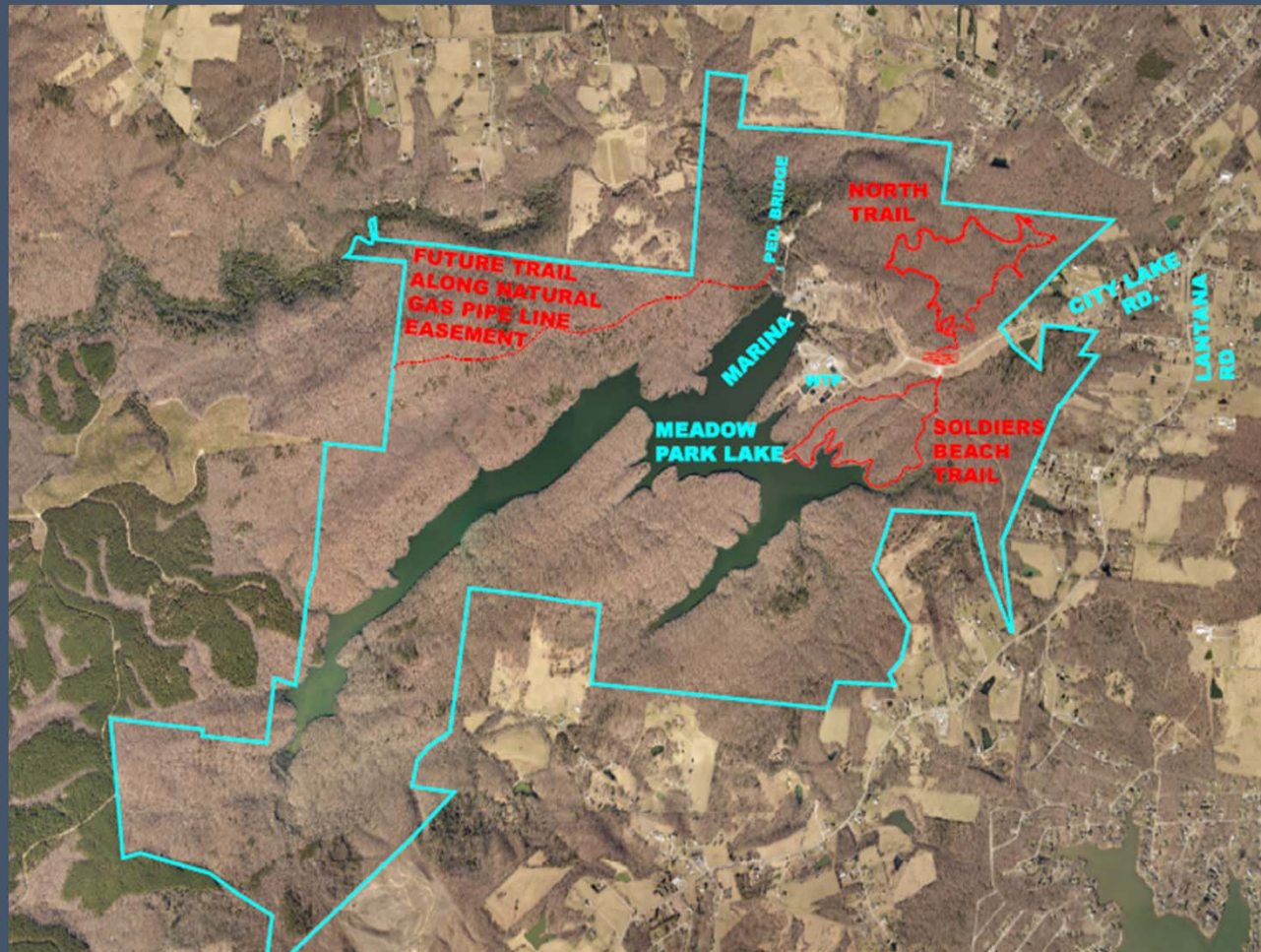
# 2 YEAR PROJECT TIMELINE

- Submit Application May 2024
- Receive Funding Award October 2024
- Environmental Clearance December – May 2025
- State Contracting June 2025
- Project Design August - October 2025
- Bidding & Award Dec. 2025 – January 2026
- Construction February - August 2026
- Project Close-out September 2026

# PROJECT DESIGN ELEMENTS COMMUNITY PARK

- Total Project: roughly \$490,000
- New Trailhead Accessory Development
- Parking Lot Upgrades
- ADA Compliant Parking

# PROJECT LOCATION MAP

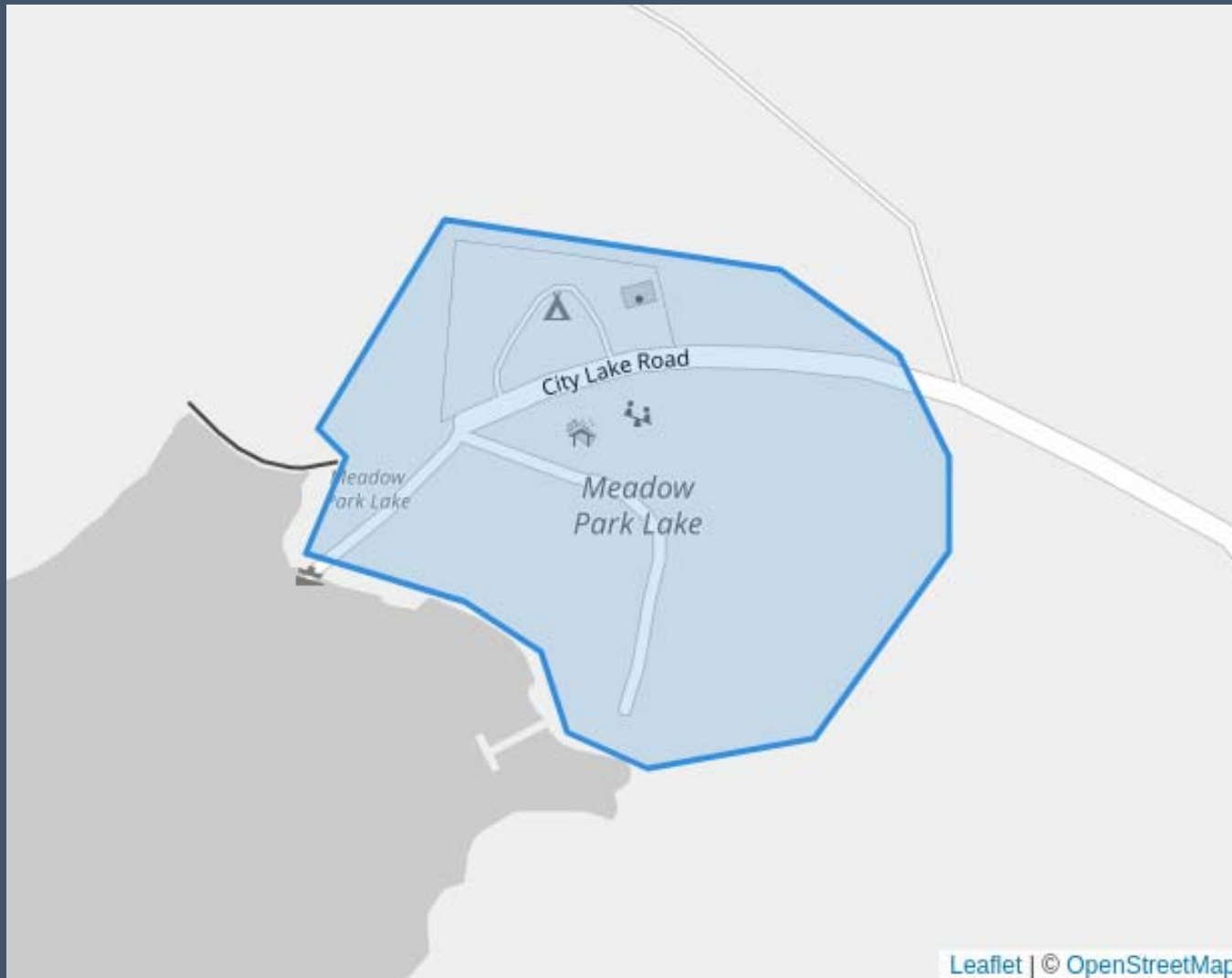




# TOPOGRAPHIC MAP

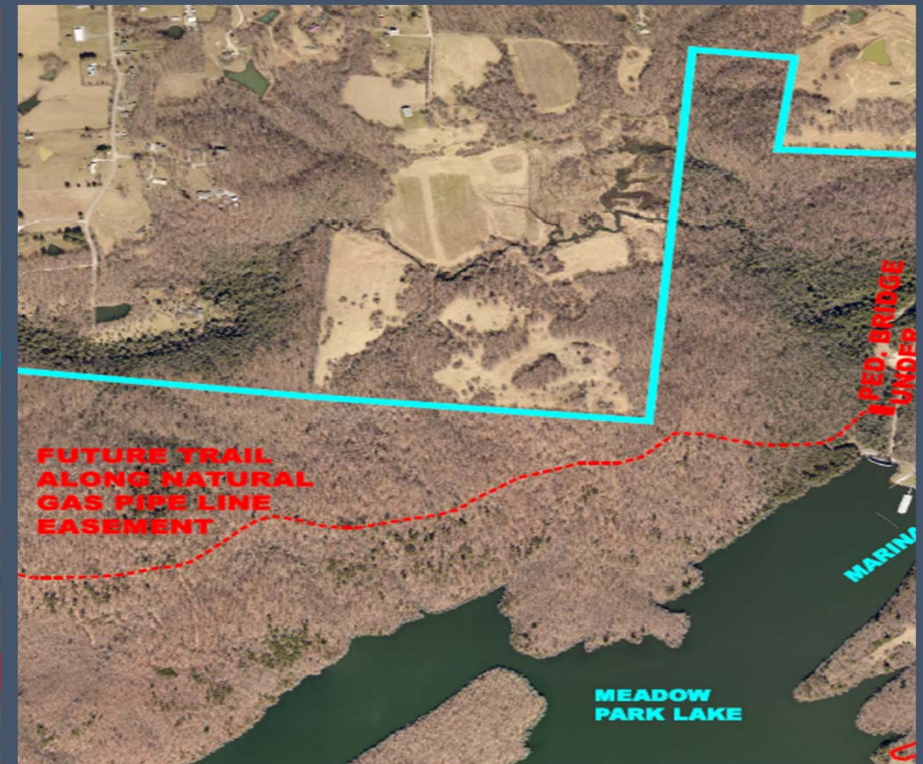


# PROJECT BOUNDARY MAP





# PRELIMINARY SITE PLAN





THANK YOU FOR  
CONSIDERING OUR  
PROJECT!