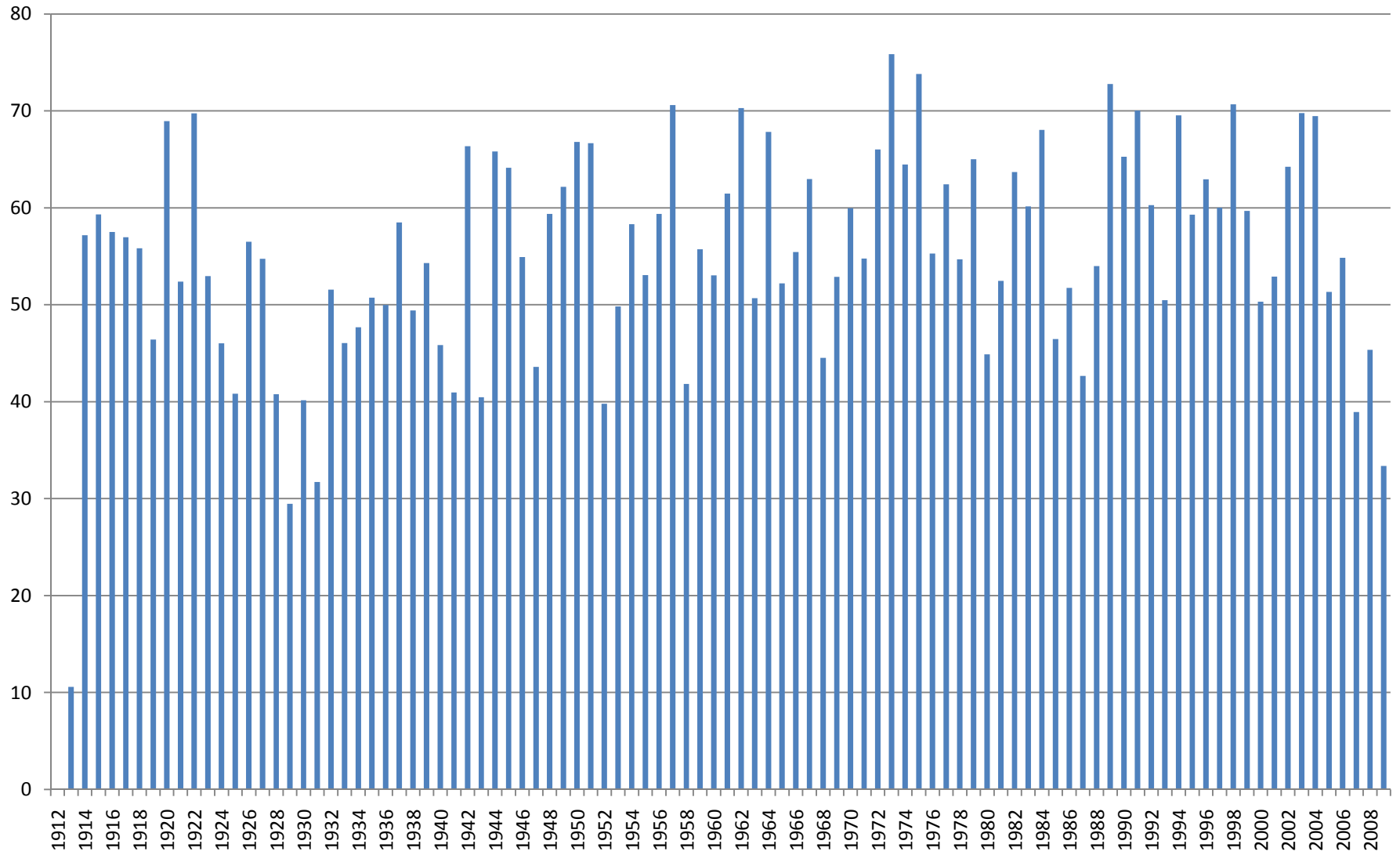


Crossville Experiment Station Recorded Annual Precipitation 1914 - 2008

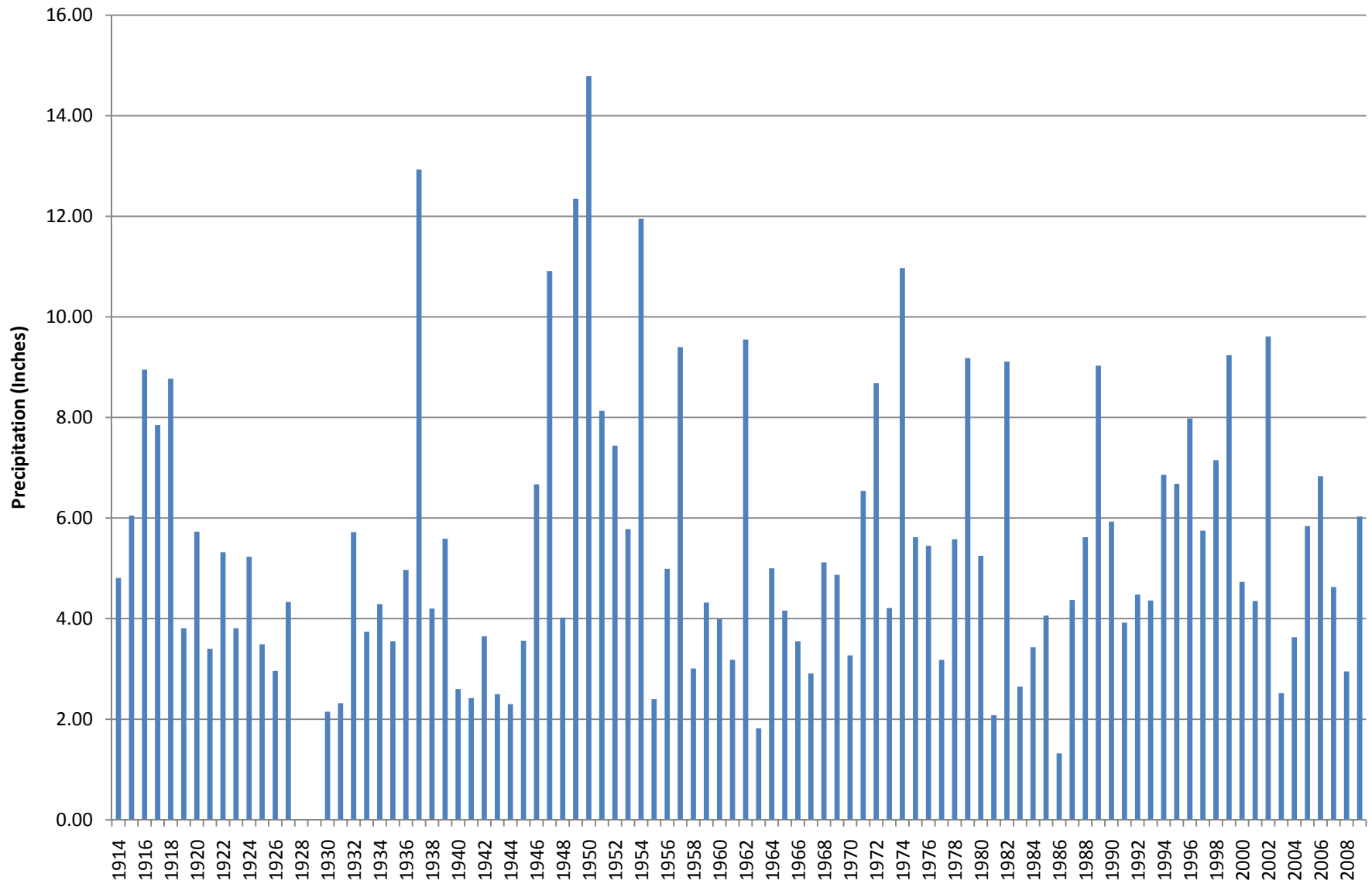


Graph based on all records available from 1914 through May 2009

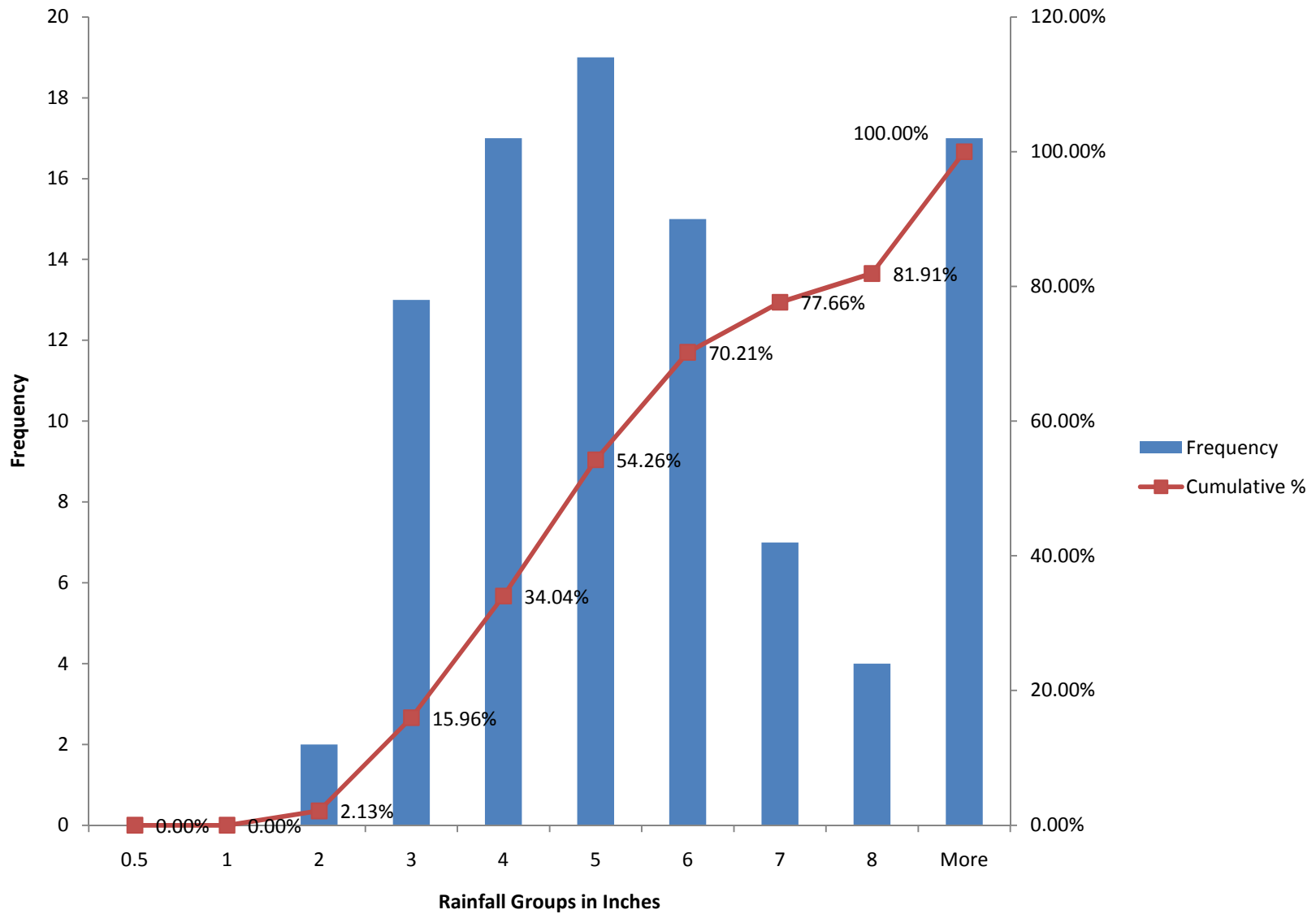
Crossville Experiment Station
Precipitation Descriptive Statistics by Month for 1914 through May 2009

| | January | February | March | April | May | June | July | August | September | October | November | December |
|------------------------|---------|----------|-------|-------|-------|-------|-------|--------|-----------|---------|----------|----------|
| Average | 5.47 | 4.99 | 5.78 | 4.83 | 4.82 | 4.50 | 5.11 | 4.29 | 3.69 | 3.23 | 4.45 | 5.51 |
| Maximum | 14.79 | 13.87 | 16.52 | 11.26 | 14.99 | 13.09 | 13.25 | 15.55 | 13.44 | 10.85 | 10.44 | 16.73 |
| Minimum | 1.32 | 0.62 | 1.33 | 0.66 | 0.91 | 0.60 | 1.06 | 1.16 | 0.21 | 0.00 | 0.72 | 0.81 |
| Std Dev | 2.73 | 2.46 | 2.71 | 2.08 | 2.38 | 2.38 | 2.27 | 2.31 | 2.20 | 2.10 | 2.06 | 2.92 |
| Variance | 1.79 | 1.04 | 1.72 | 0.87 | 0.91 | 0.94 | 1.55 | 1.30 | 0.38 | 0.06 | 1.07 | 0.82 |
| 1 Percentile | 1.79 | 1.04 | 1.72 | 0.87 | 0.91 | 0.94 | 1.55 | 1.30 | 0.38 | 0.06 | 1.07 | 0.82 |
| 2.5 Percentile | 2.10 | 1.29 | 2.21 | 1.53 | 1.53 | 1.16 | 1.97 | 1.32 | 0.76 | 0.31 | 1.31 | 1.73 |
| 5 Percentile | 2.31 | 1.67 | 2.52 | 1.82 | 2.01 | 1.47 | 2.36 | 1.47 | 0.92 | 0.51 | 1.44 | 1.95 |
| 10 Percentile | 2.54 | 2.53 | 2.85 | 2.28 | 2.44 | 1.77 | 2.49 | 1.81 | 1.16 | 0.76 | 1.67 | 2.45 |
| 25 Percentile | 3.55 | 3.44 | 3.87 | 3.38 | 3.28 | 2.65 | 3.25 | 2.73 | 2.19 | 1.88 | 3.27 | 3.41 |
| 50 Percentile | 4.84 | 4.41 | 5.34 | 4.62 | 4.37 | 4.11 | 4.74 | 3.87 | 3.41 | 2.93 | 4.13 | 4.81 |
| 75 Percentile | 6.68 | 6.15 | 6.83 | 6.01 | 5.87 | 6.01 | 6.41 | 5.39 | 4.94 | 4.24 | 5.63 | 7.26 |
| 90 Percentile | 9.22 | 8.05 | 9.48 | 7.66 | 7.12 | 7.47 | 8.17 | 6.76 | 6.21 | 6.14 | 7.14 | 9.25 |
| 95 Percentile | 10.93 | 10.16 | 11.31 | 8.36 | 8.44 | 9.13 | 9.25 | 8.20 | 7.42 | 6.94 | 8.54 | 10.23 |
| 97.5 Percentile | 12.22 | 10.70 | 12.11 | 9.14 | 11.66 | 9.74 | 9.61 | 9.96 | 8.22 | 7.96 | 9.17 | 12.65 |
| 99 Percentile | 13.06 | 11.11 | 12.87 | 11.06 | 13.11 | 10.49 | 9.93 | 11.06 | 9.18 | 8.81 | 9.83 | 15.24 |

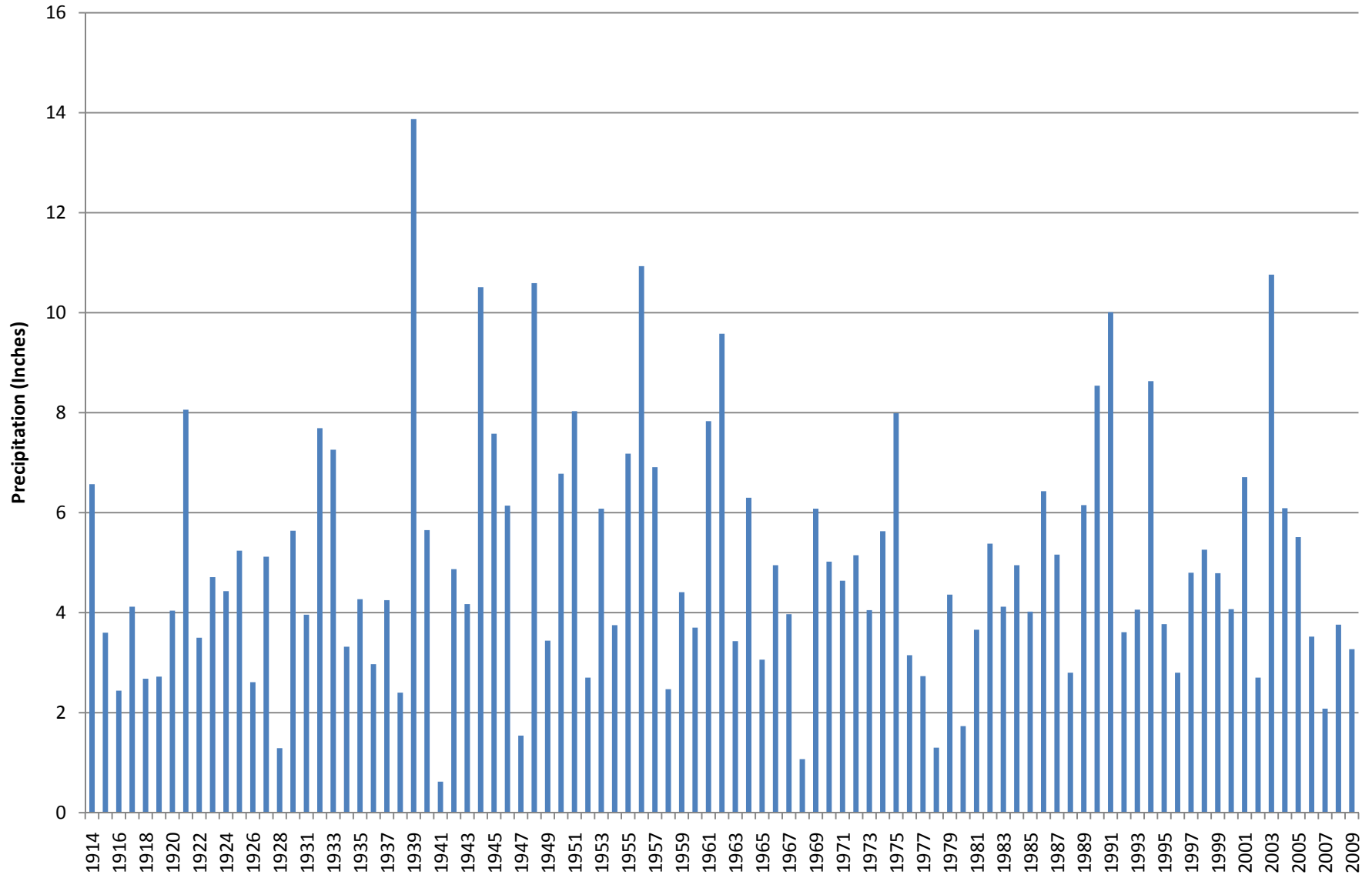
Crossville Experiment Station January Precipitation 1914 - 2009



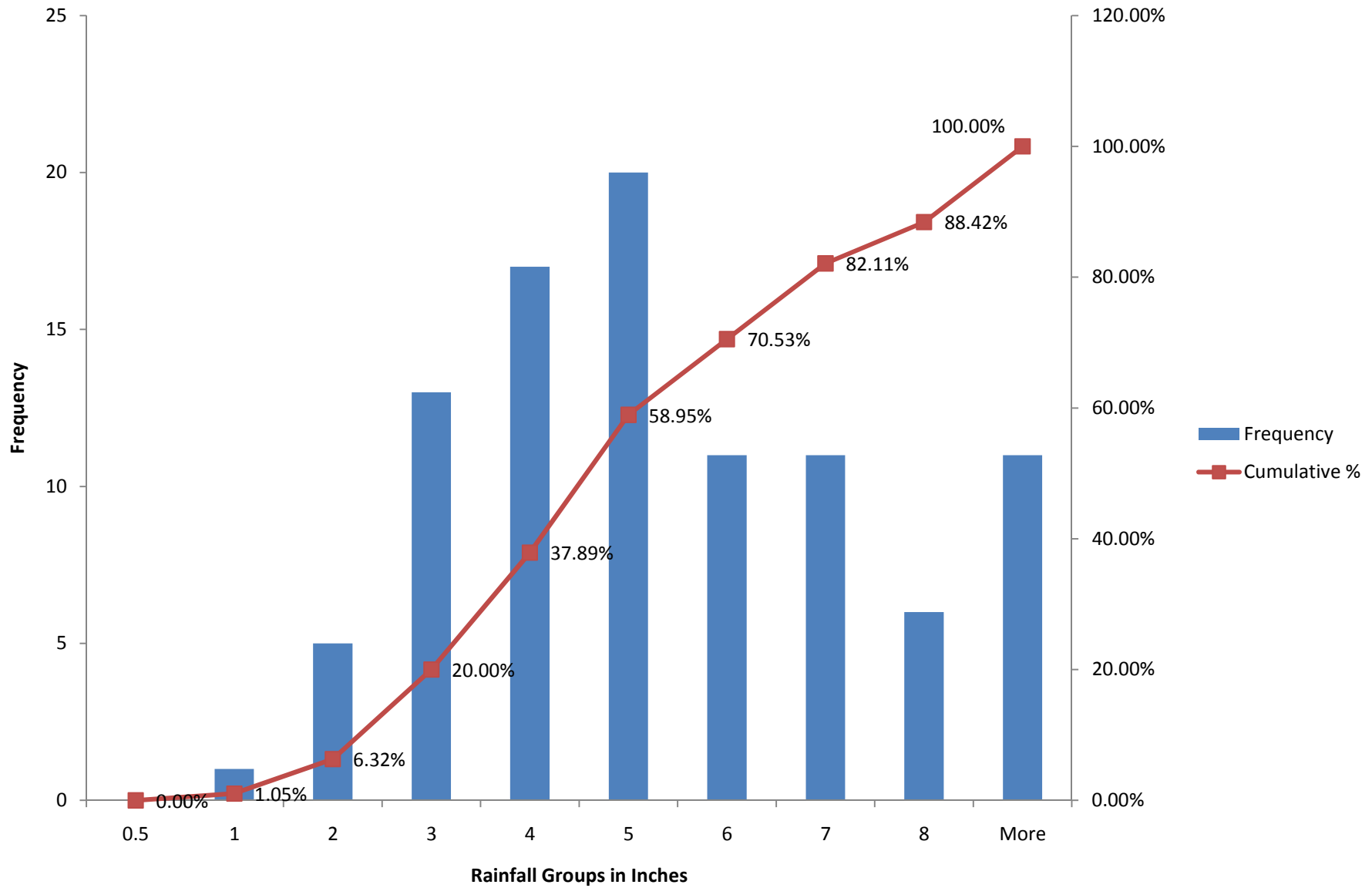
Crossville Experiment Station January Precipitation Histogram 1914 - 2009



Crossville Experiment Station February Precipitation 1914 - 2009

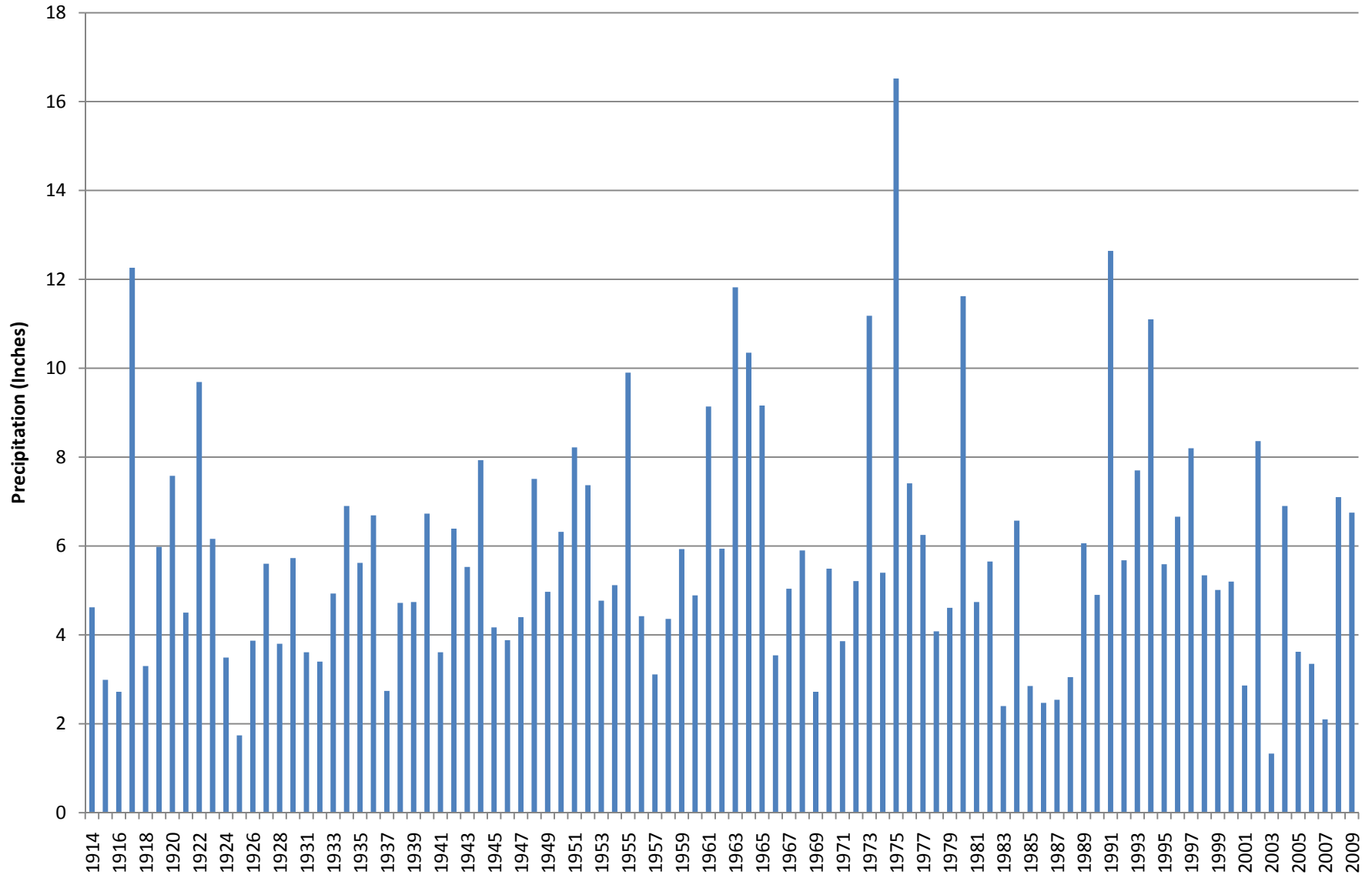


Crossville Experiment Station February Precipitation Histogram 1914 - 2009

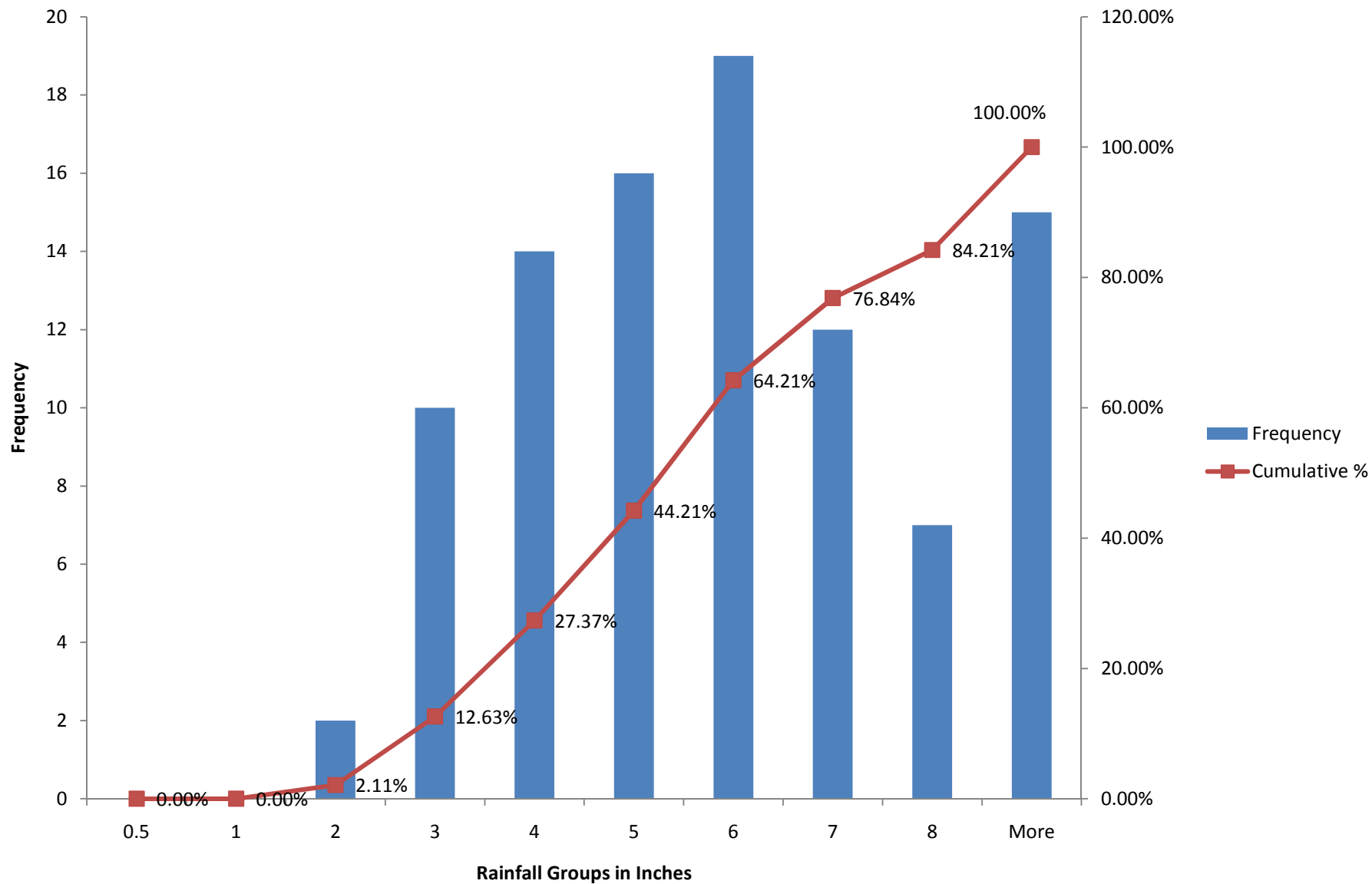


Crossville Experiment Station

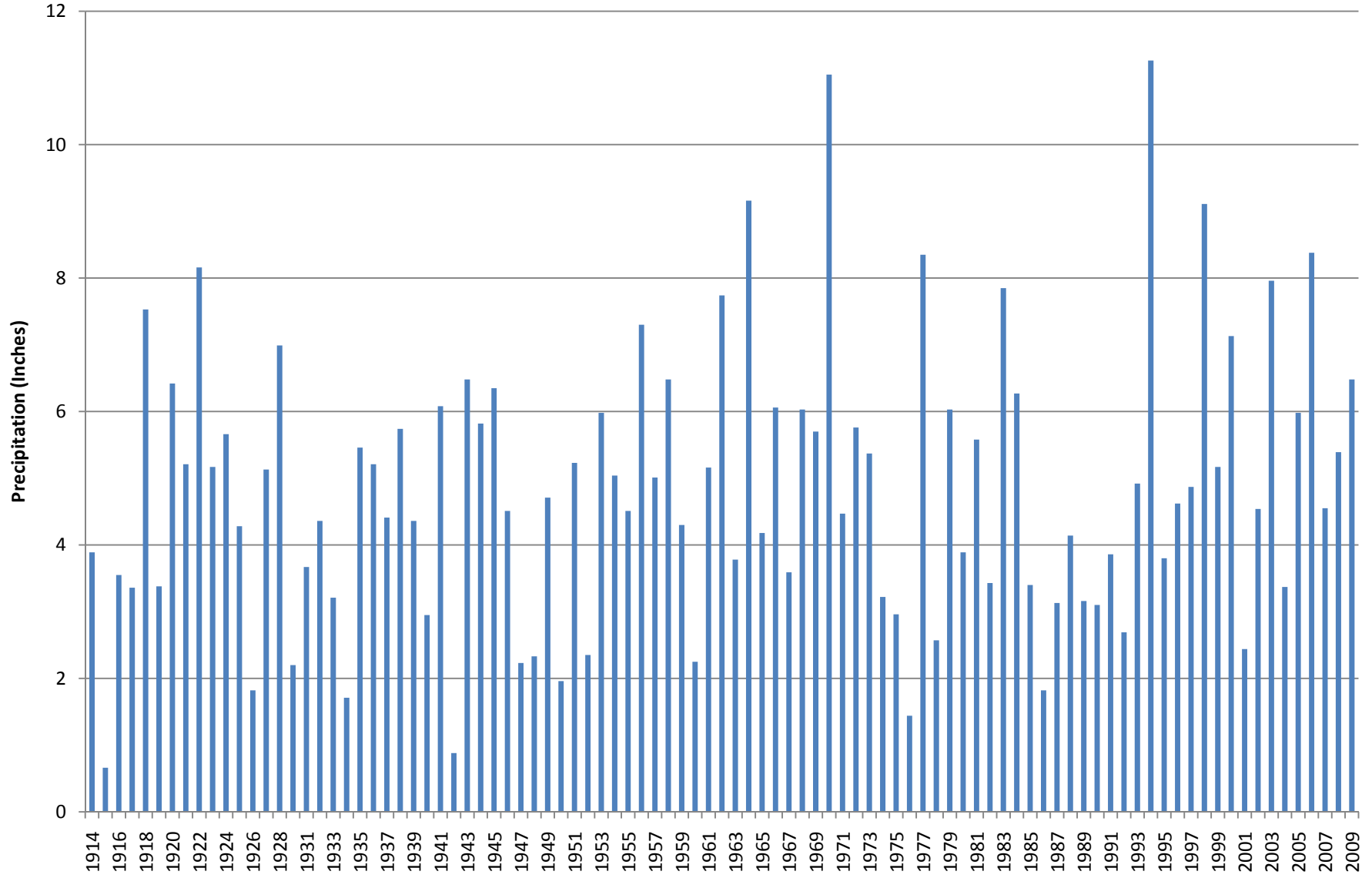
March Precipitation 1914 - 2009



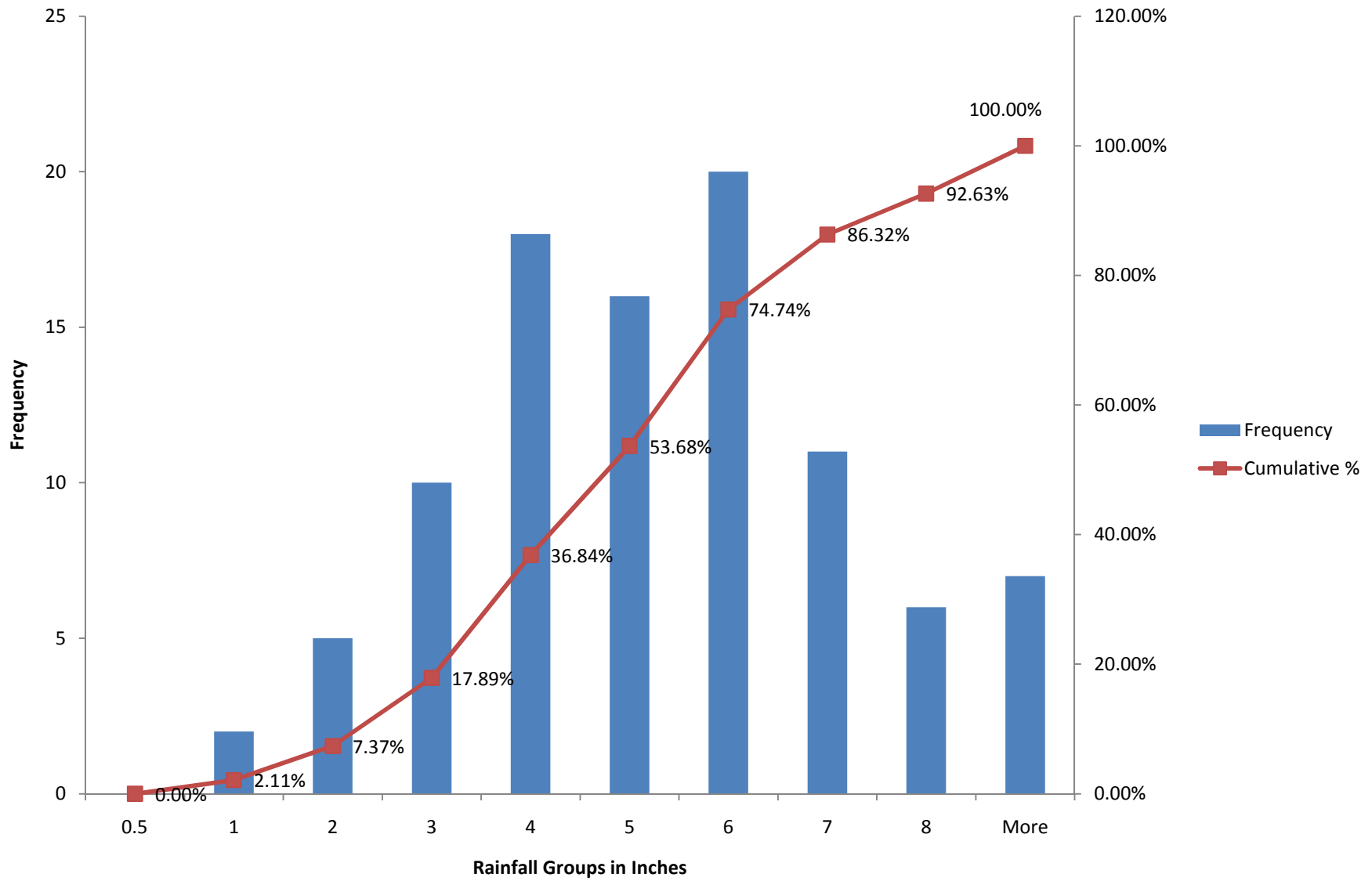
Crossville Experiment Station March Precipitation Histogram 1914 - 2009



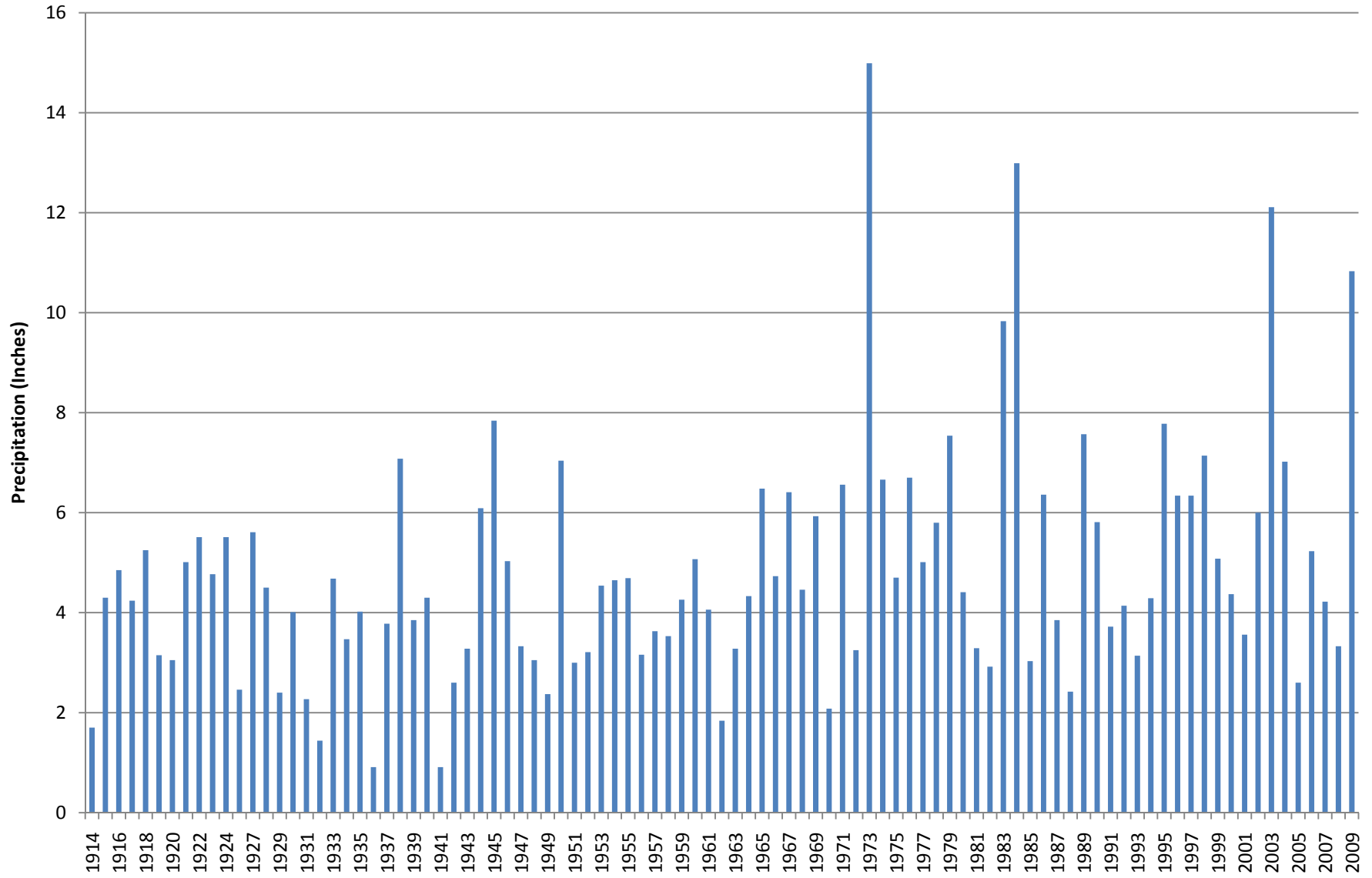
Crossville Experiment Station April Precipitation 1914 - 2009



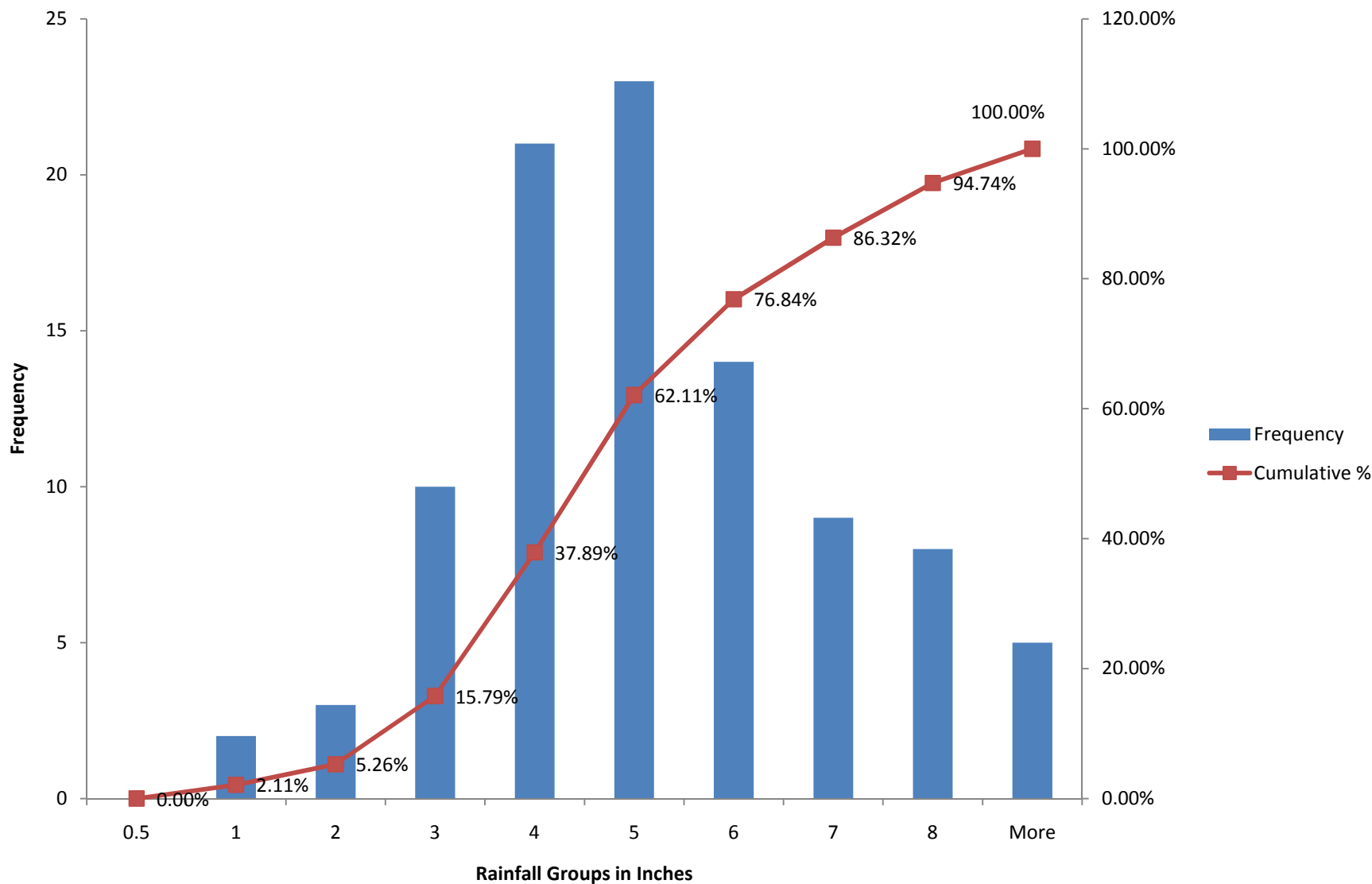
Crossville Experiment Station April Precipitation Histogram 1914 - 2009



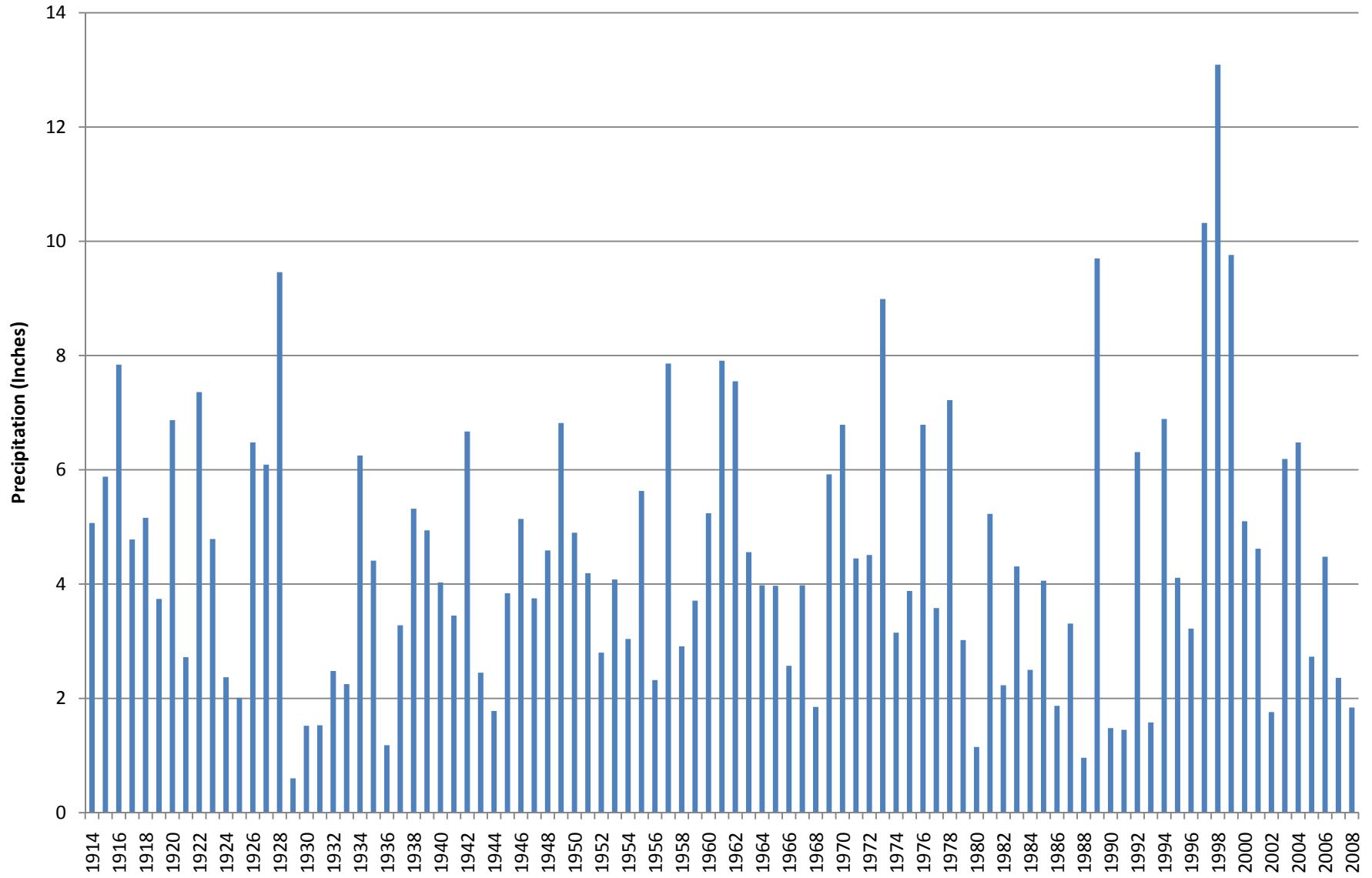
Crossville Experiment Station May Precipitation 1914 - 2009



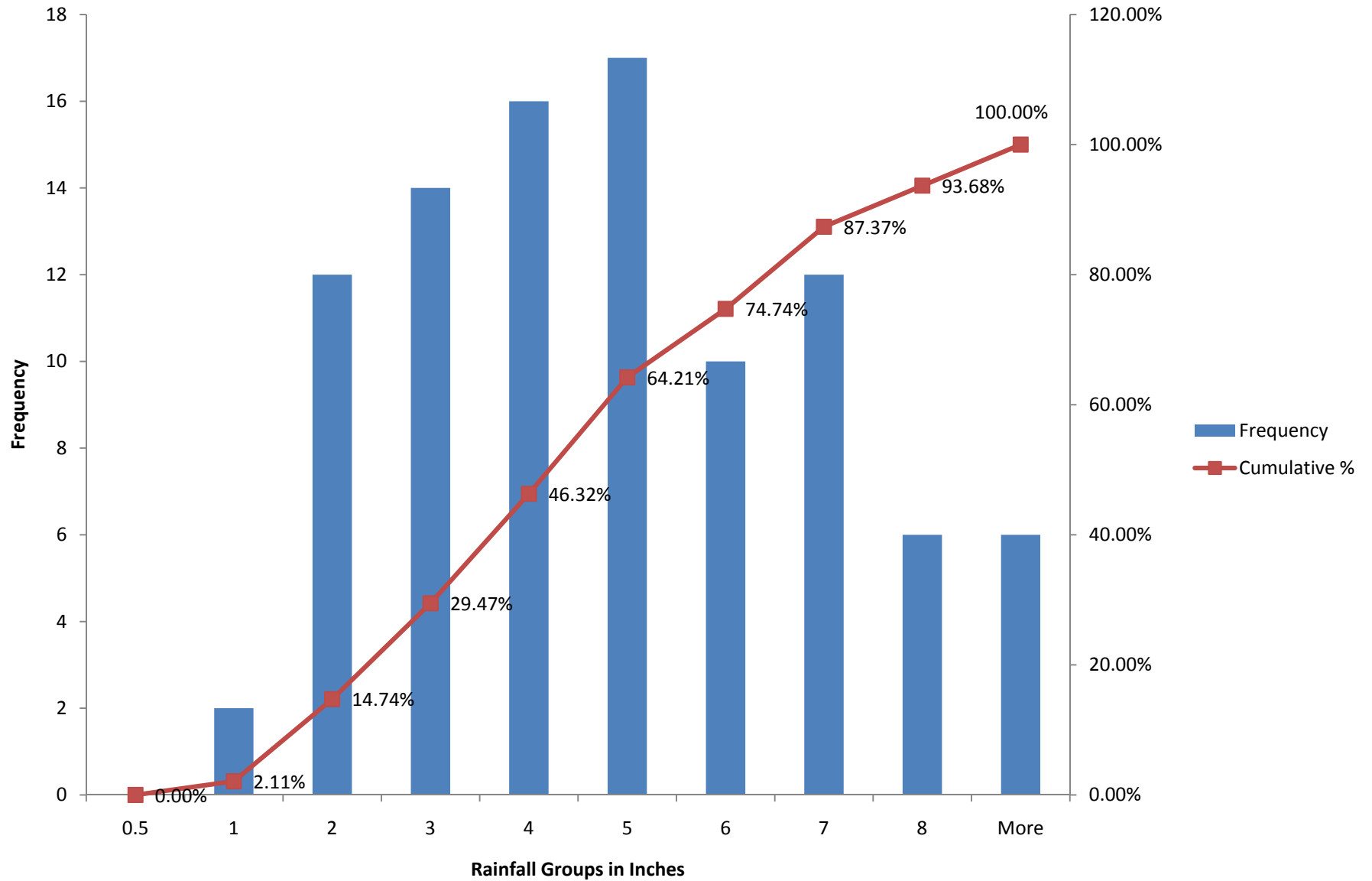
Crossville Experiment Station May Precipitation Histogram 1914 - 2009



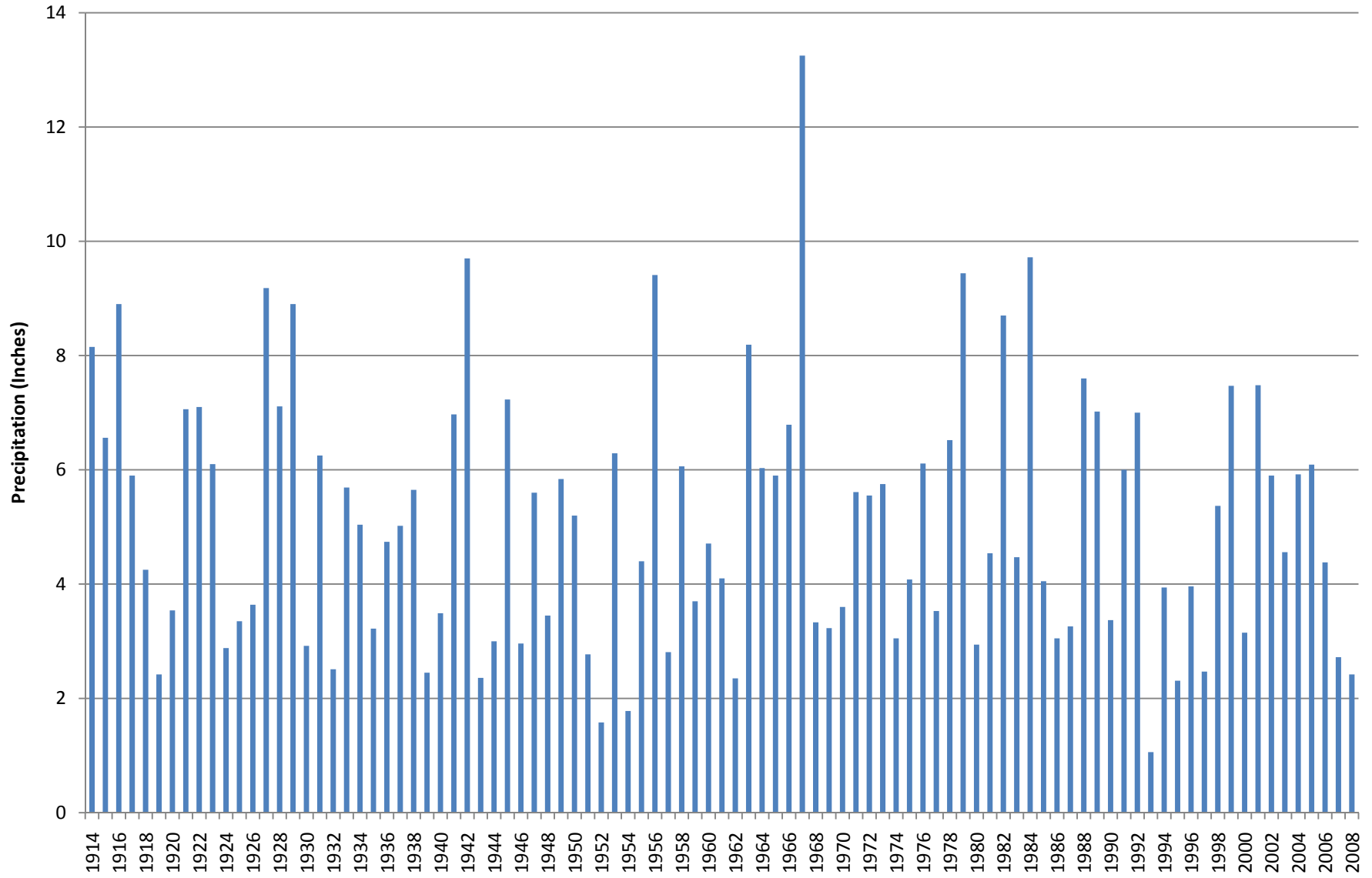
Crossville Experiment Station June Precipitation 1914 - 2008



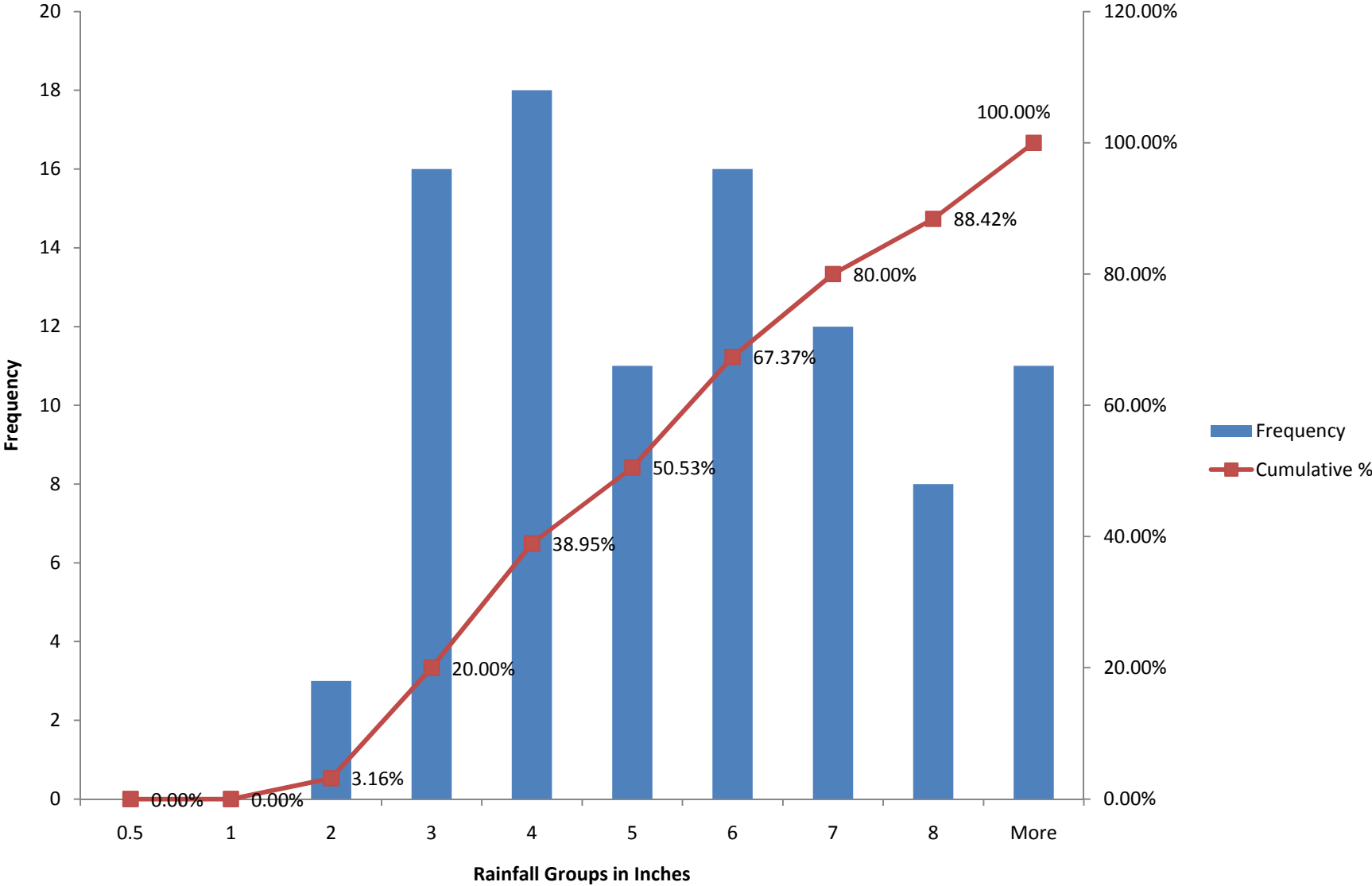
Crossville Experiment Station June Precipitation Histogram 1914 - 2008



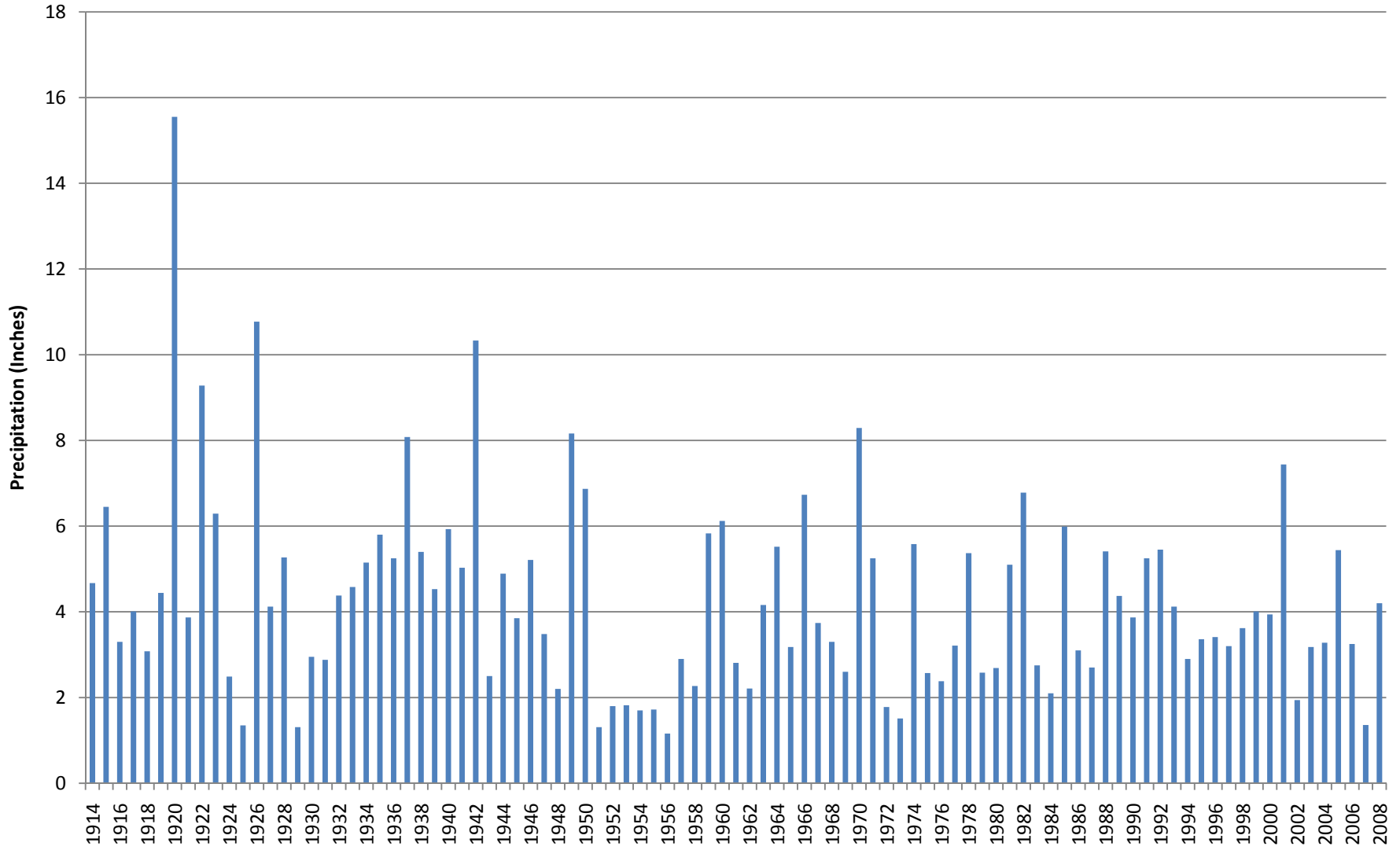
Crossville Experiment Station July Precipitation 1914 - 2008



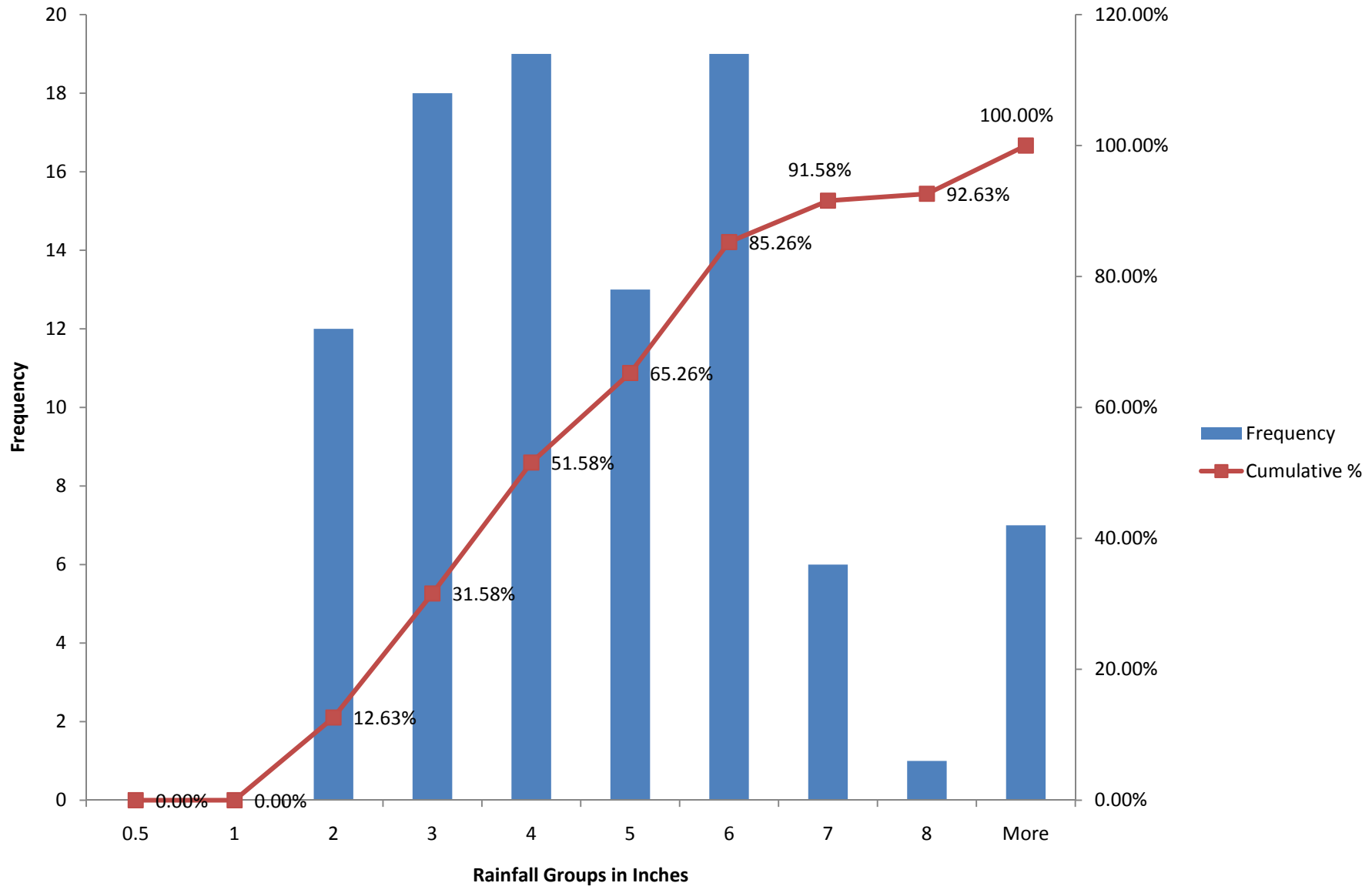
Crossville Experiment Station July Precipitation Histogram 1914 - 2008



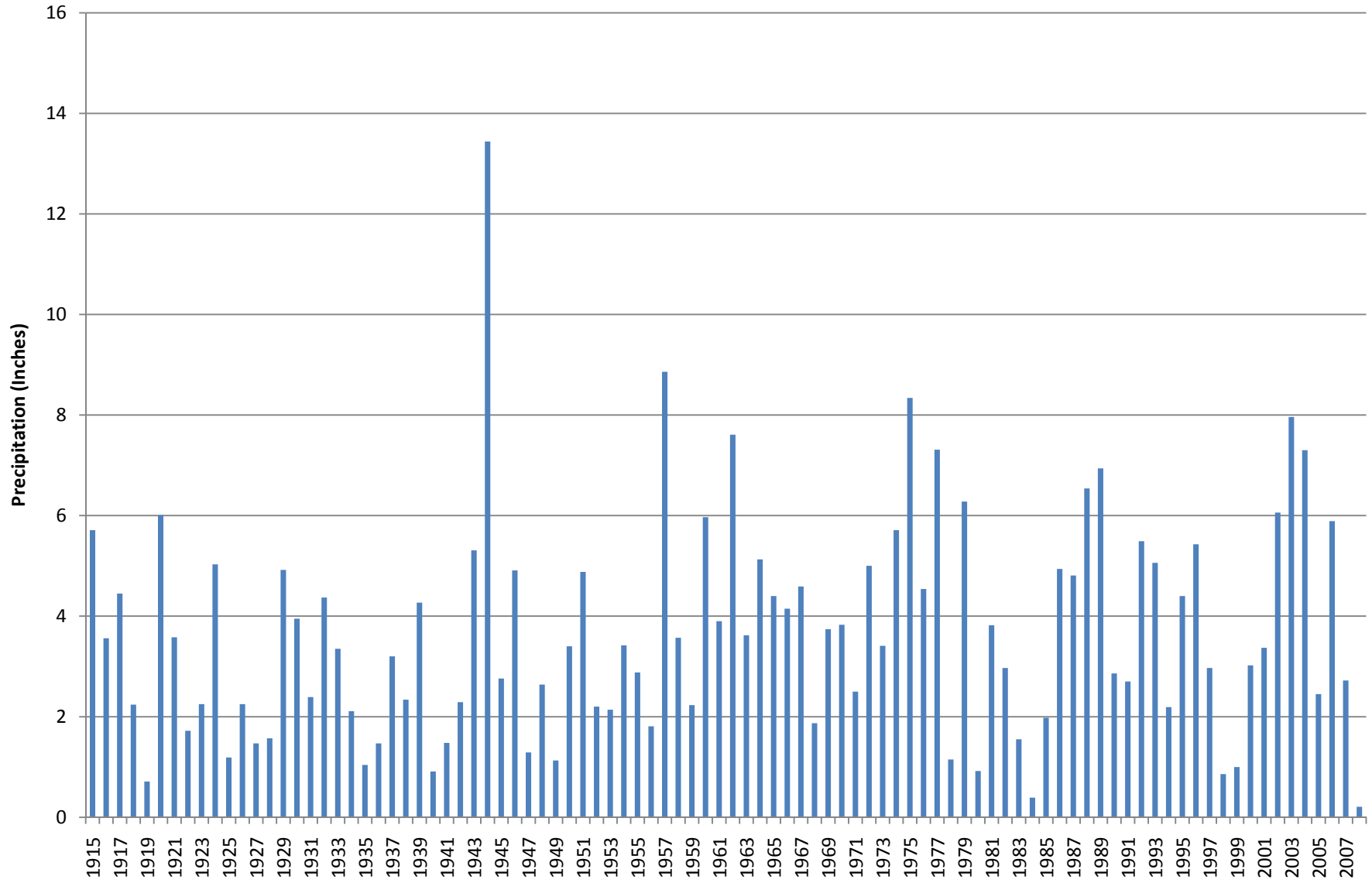
Crossville Experiment Station August Precipitation 1914 - 2008



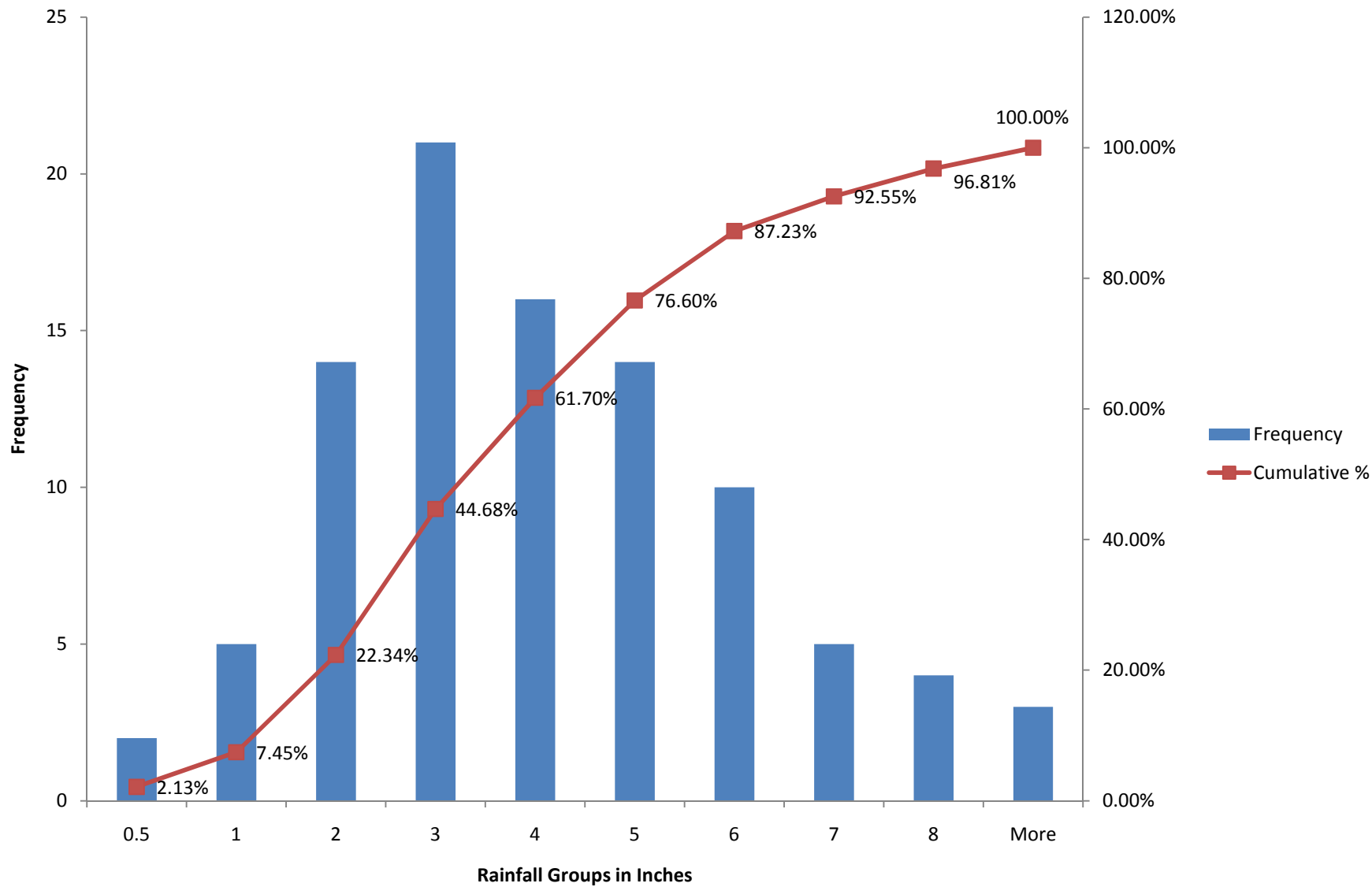
Crossville Experiment Station August Precipitation Histogram 1914 - 2008



Crossville Experiment Station September Precipitation 1914 - 2008

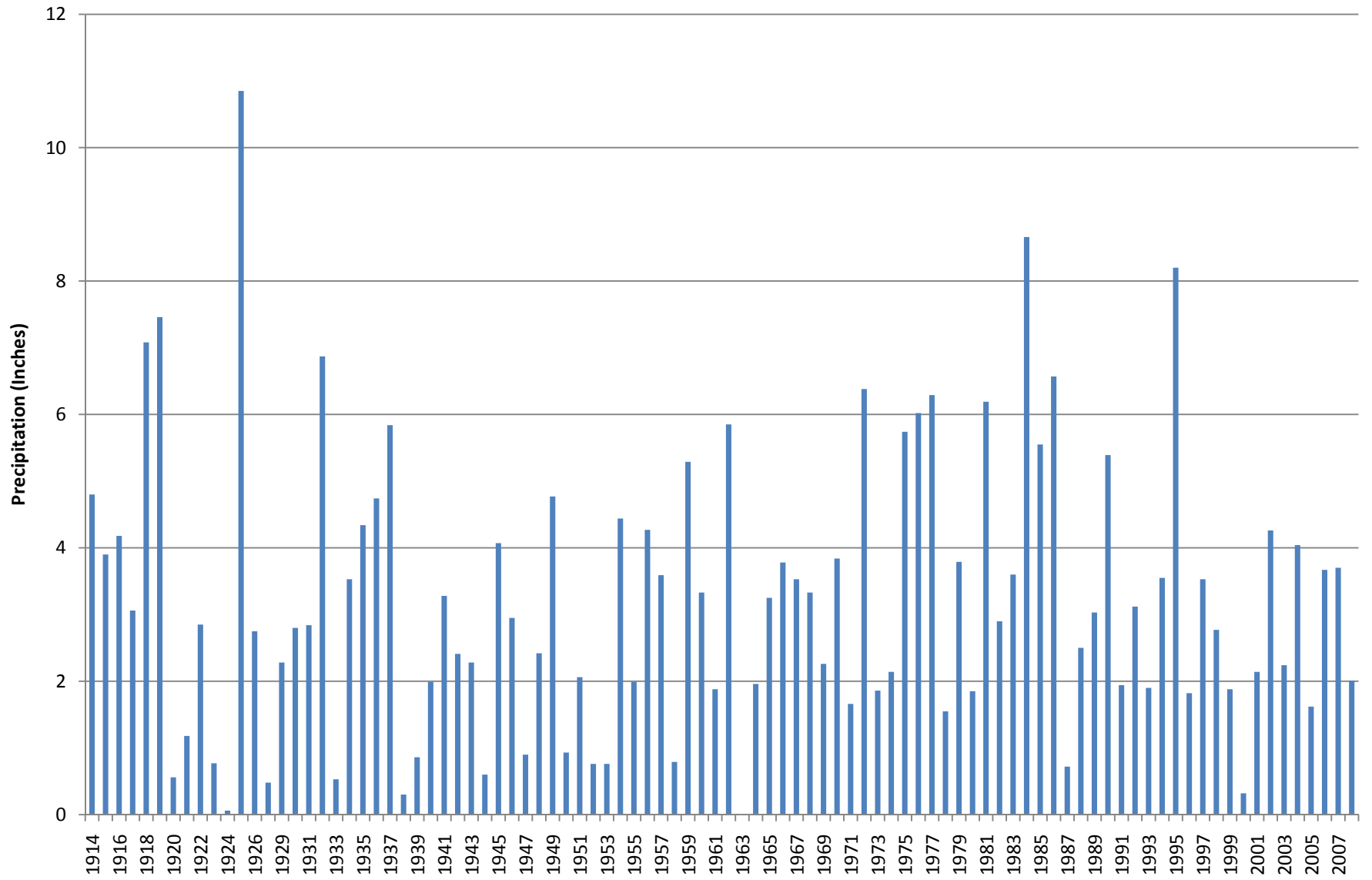


Crossville Experiment Station September Precipitation Histogram 1914 - 2008

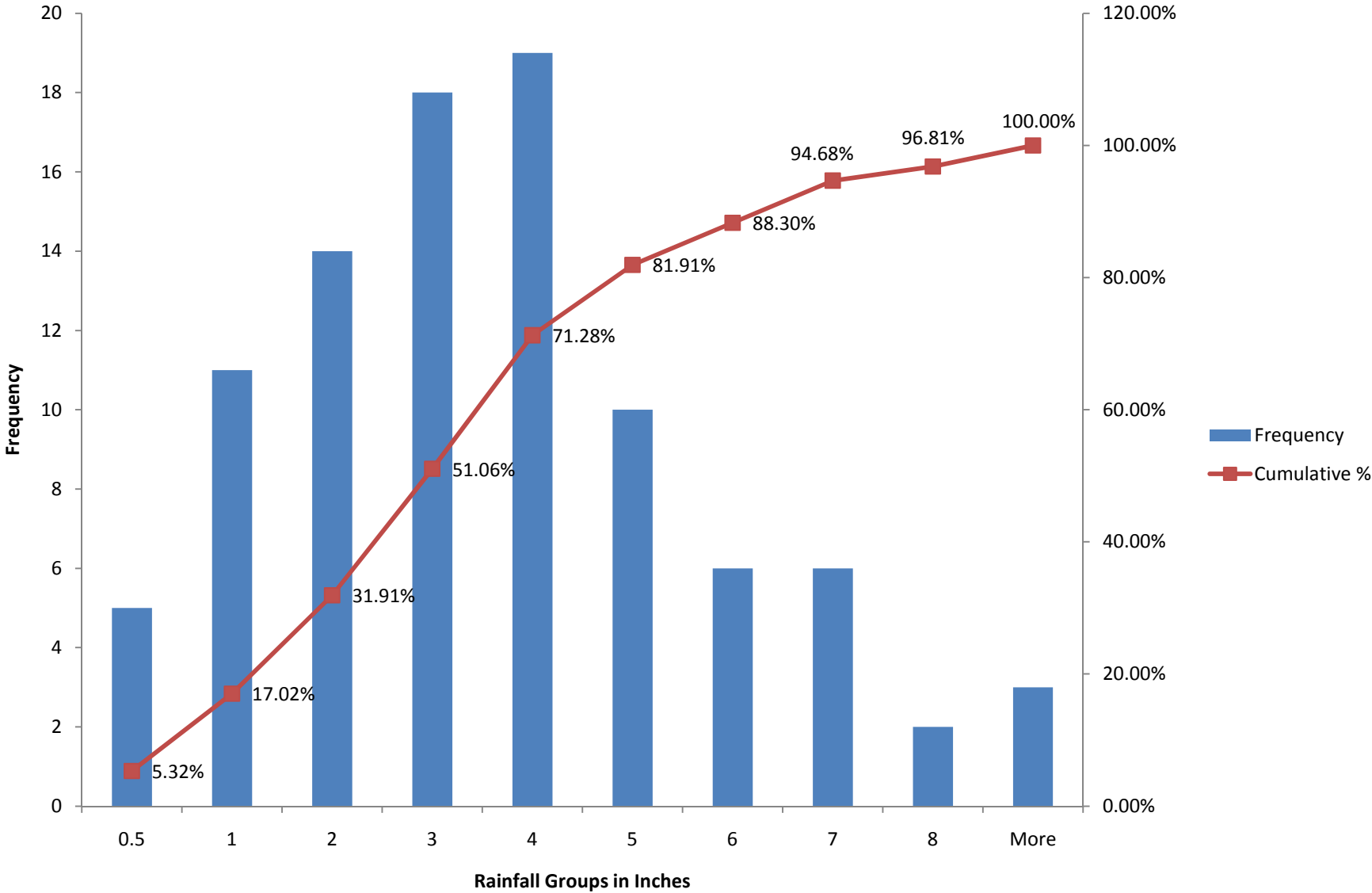


Crossville Experiment Station

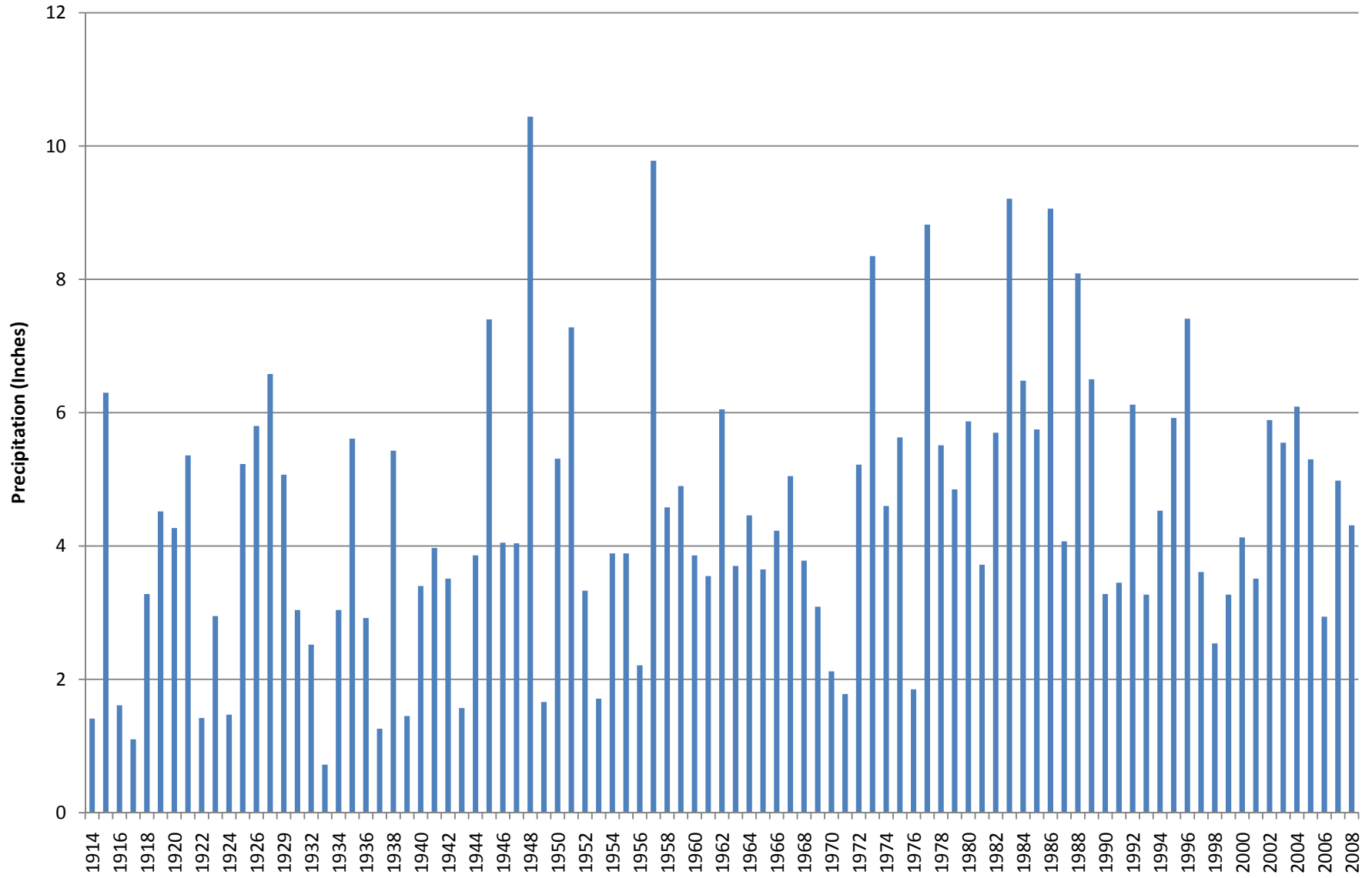
October Precipitation 1914 - 2008



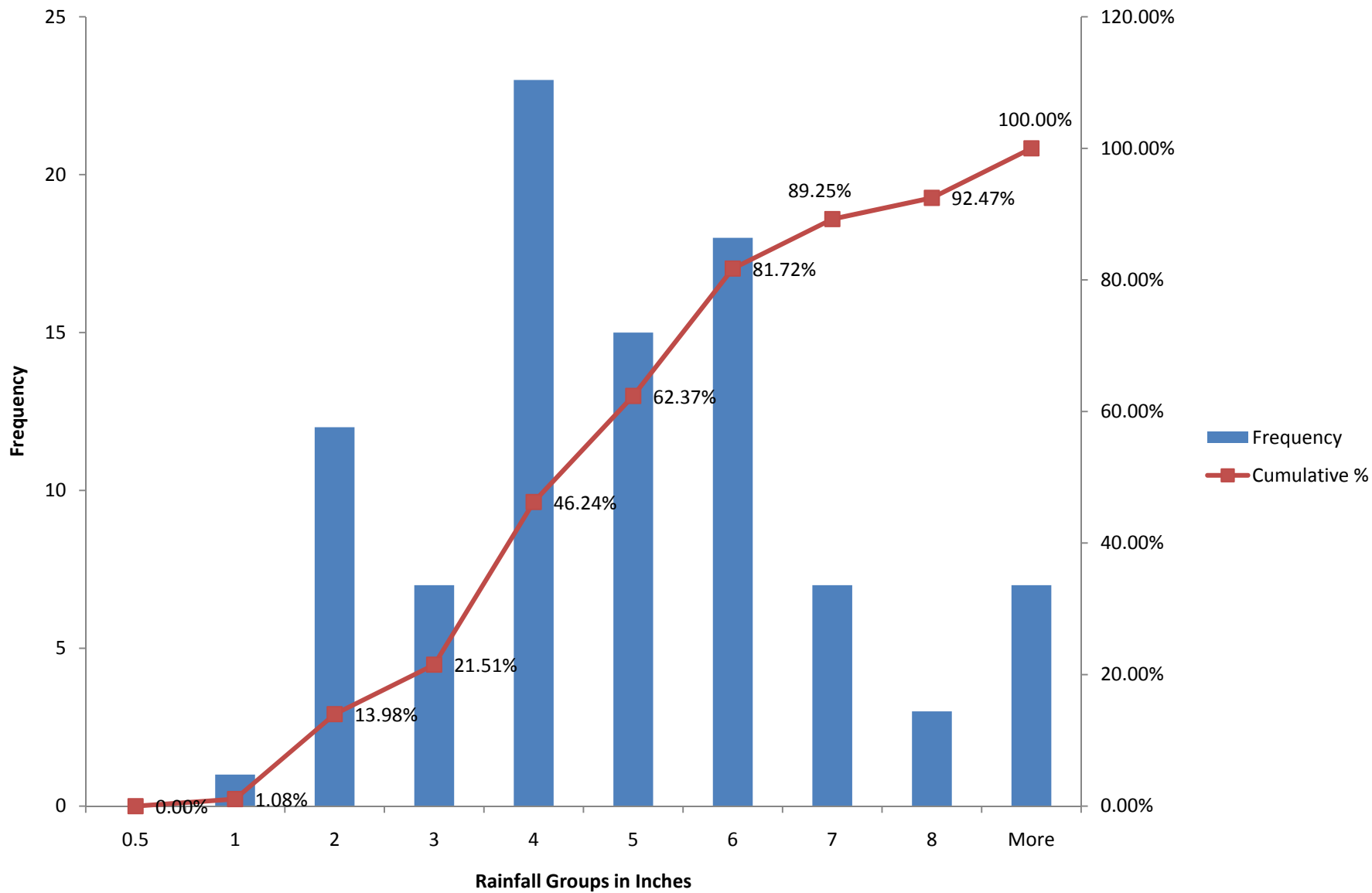
Crossville Experiment Station October Precipitation Histogram 1914 - 2008



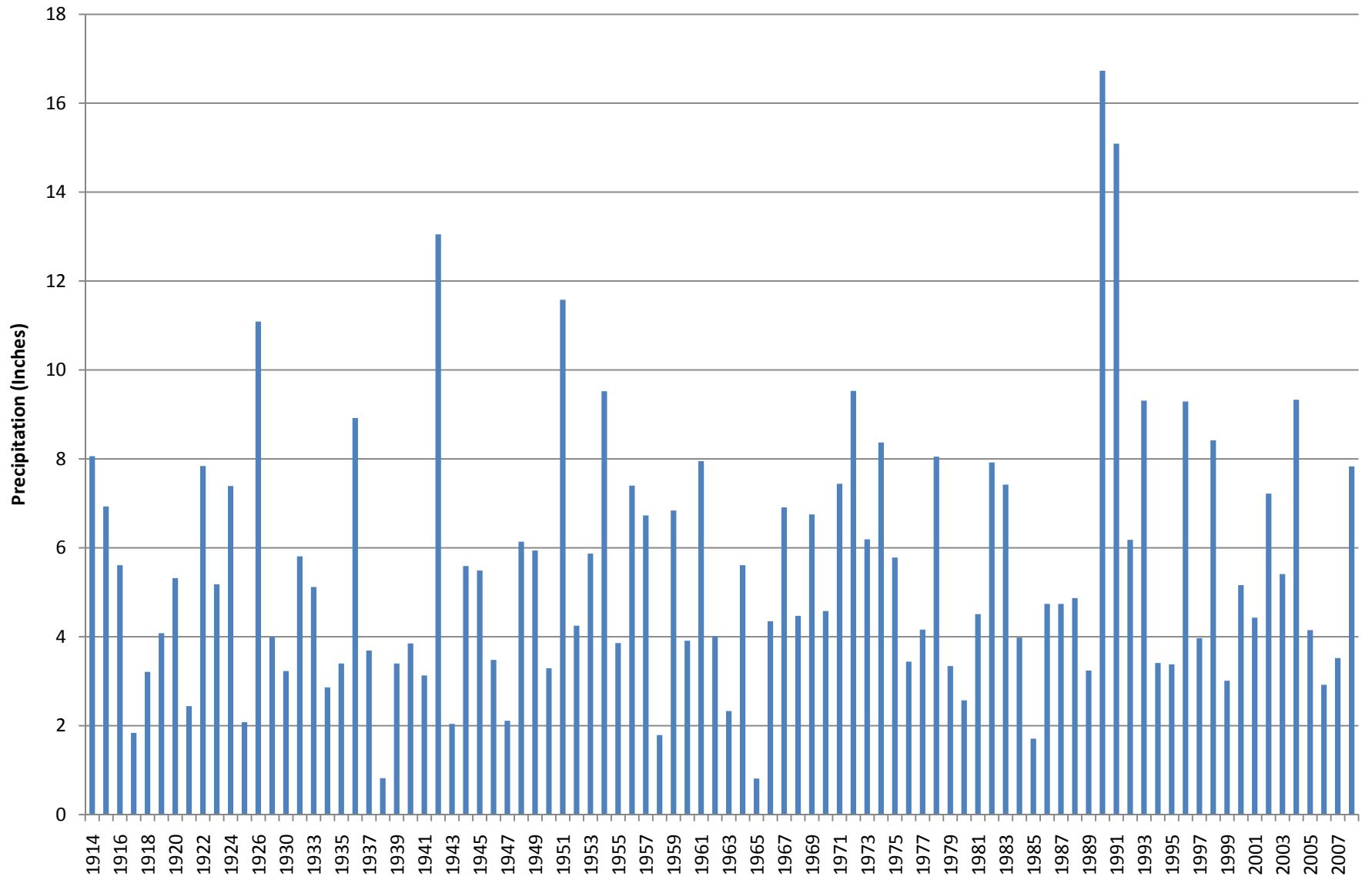
Crossville Experiment Station November Precipitation 1914 - 2008



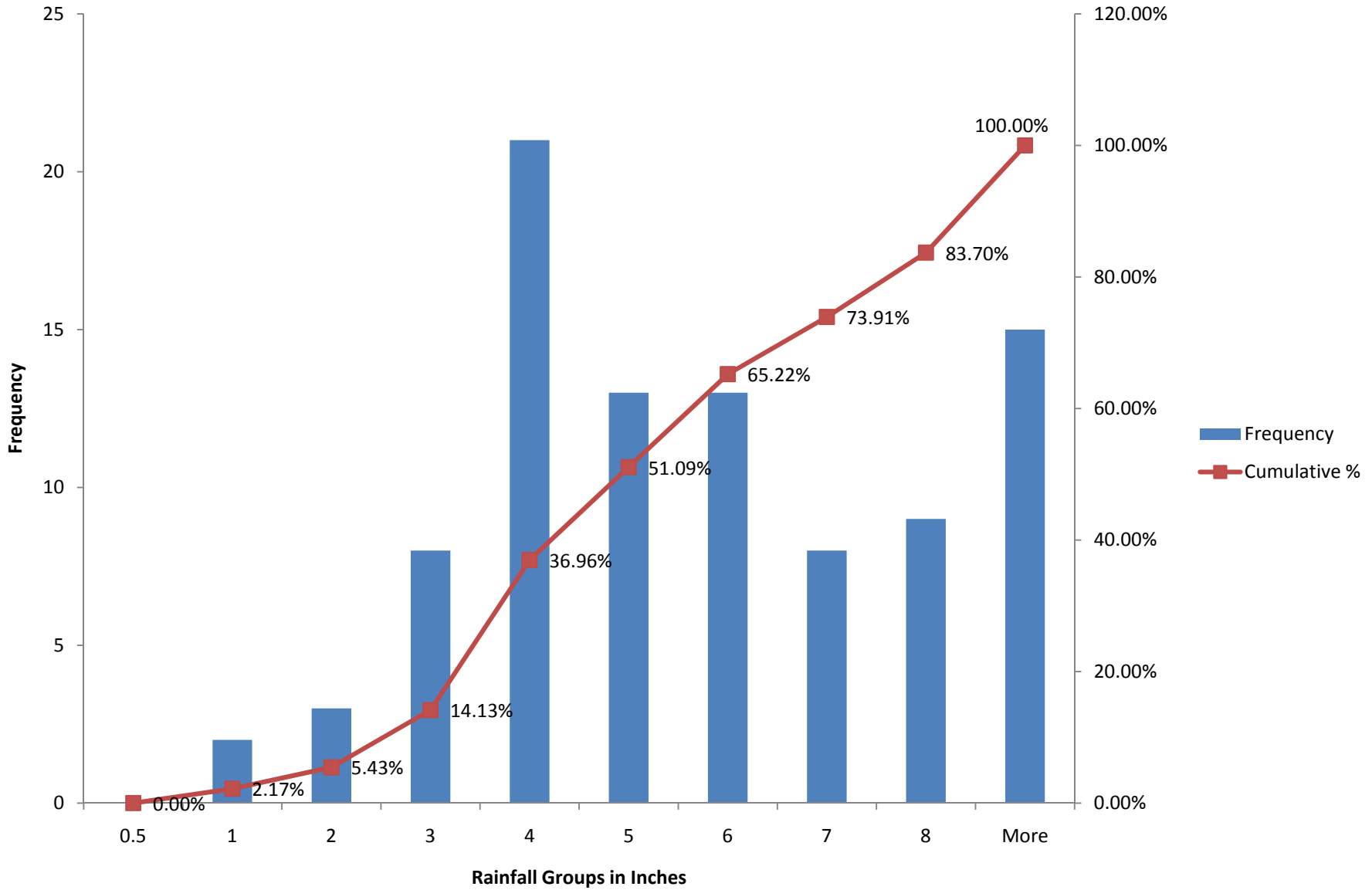
Crossville Experiment Station November Precipitation Histogram 1914 - 2008



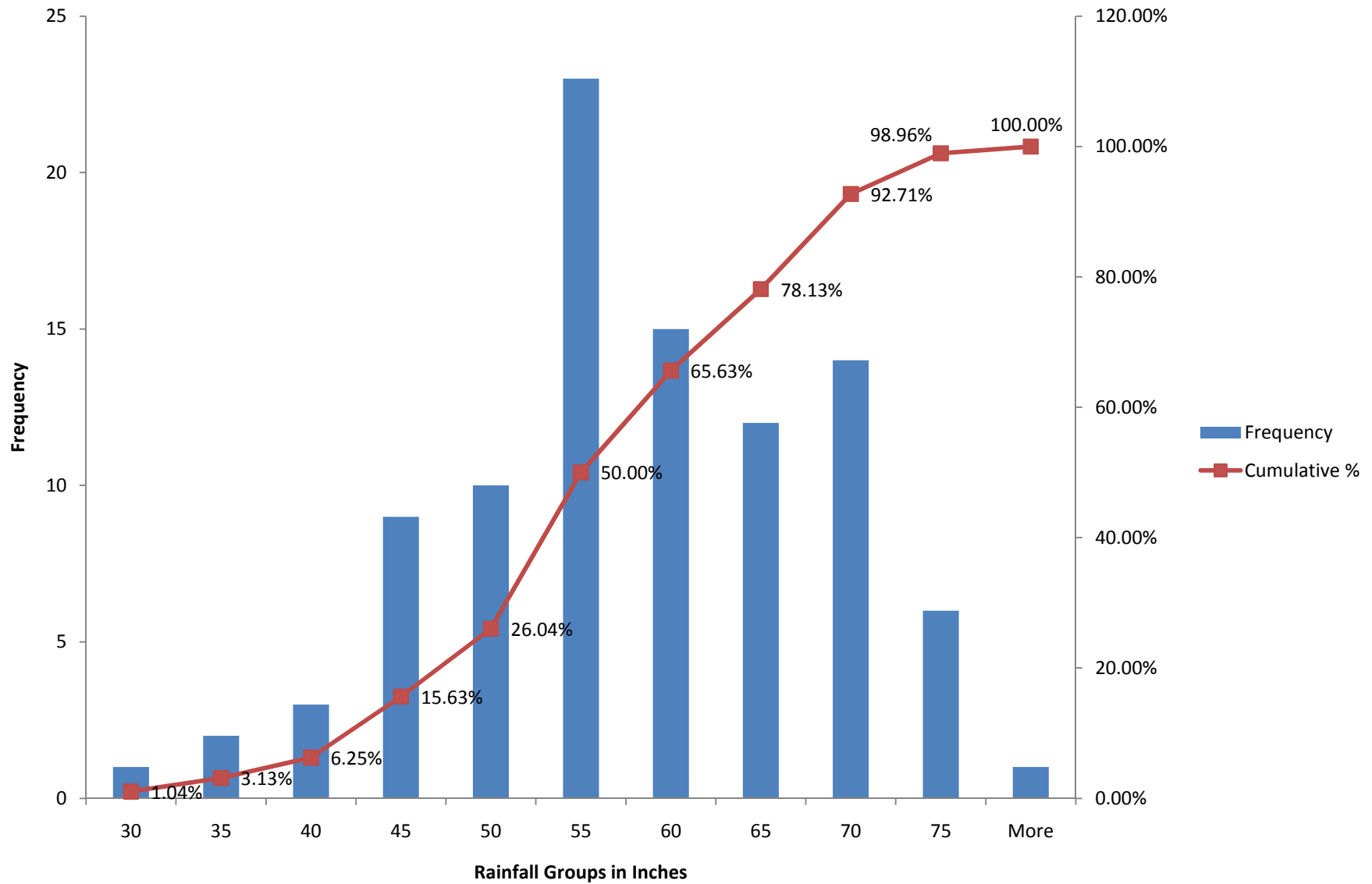
Crossville Experiment Station December Precipitation 1914 - 2008



Crossville Experiment Station December Precipitation Histogram 1914 - 2008



Crossville Experiment Station Annual Precipitation Histogram 1914 - 2008



Crossville Experiment Station Wet and Dry Season Precipitation Statistics 1914 - 2008

