

SIZE		TEE							
Main	2'-6"	8'-12"	8'-10"	12'	12'	12'	18'		
Branch	2'-6"	2'-6"	8'-10"	2'-6"	8'-10"	12'	15'-18"		
A	26"	26"	43"	26"	43"	52"	70"		
B	26"	26"	43"	26"	43"	52"	70"		
C	12"	12"	12"	12"	12"	12"	30"		
D	13"	13"	21"	13"	21"	26"	24"		

SIZE		90° BEND							
A	16'	16'	26'	33'	40'	50'	70'		
B	16'	16'	24'	33'	40'	50'	70'		
C	9'	9'	12'	12'	15'	16'	22'		
D	8'	8'	12'	16'	20'	25'	24'		

SIZE		PLUG							
A	26"	26"	26"	34"	43"	52"	70"		
B	26"	26"	26"	34"	43"	52"	70"		
C	12"	12"	12"	12"	12"	12"	30"		
D	11"	11"	11"	15"	22"	32"	32"		

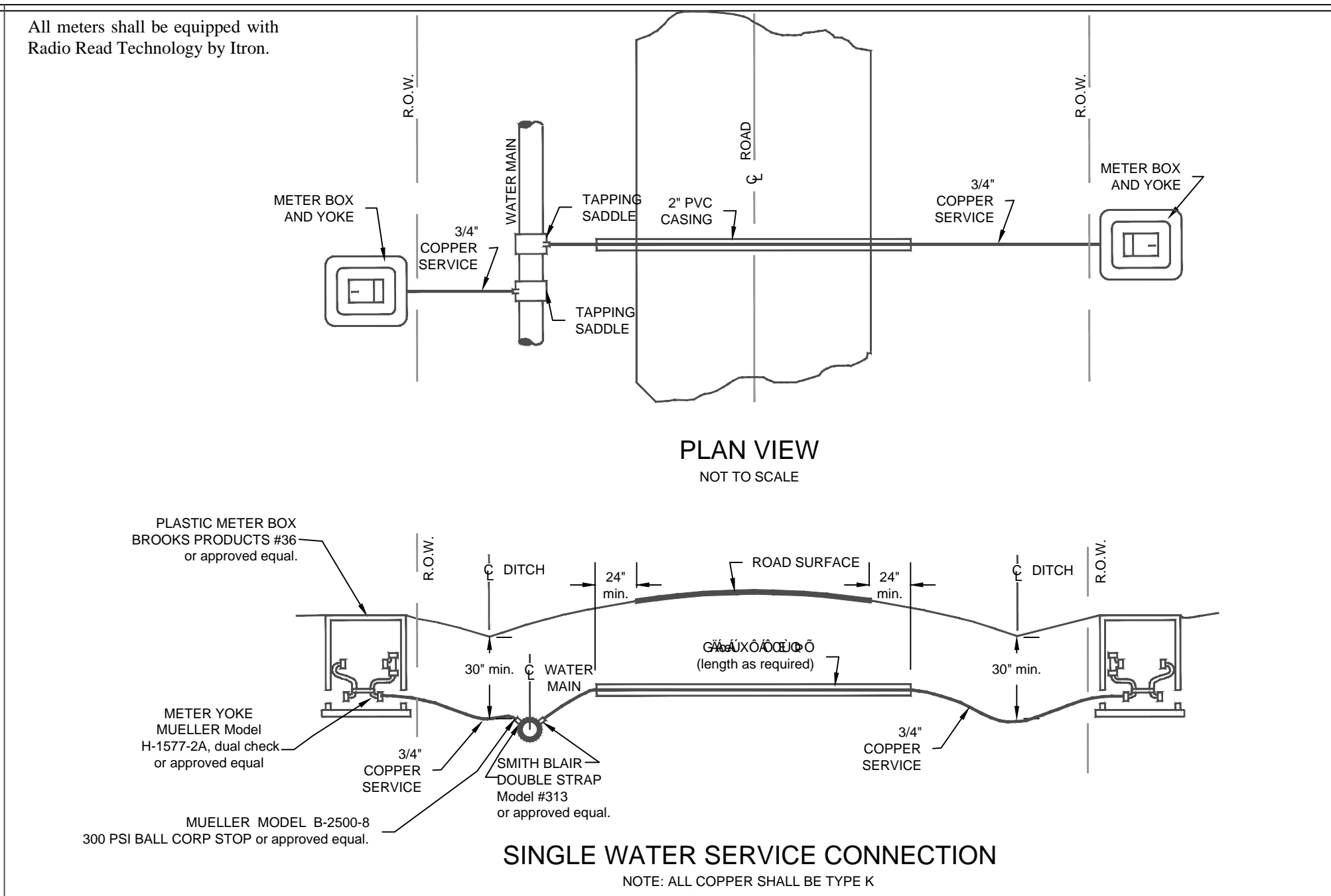
SIZE		45° BEND							
A	12'	12'	18'	24'	31'	37'	52'		
B	12'	12'	18'	24'	31'	37'	52'		
C	8'	8'	10'	12'	14'	16'	14'		
D	6'	6'	9'	12'	15'	18'	18'		

SIZE		22-1/2° BEND							
A	9'	9'	13'	18'	23'	26'	40'		
B	9'	9'	13'	18'	23'	26'	40'		
C	8'	8'	10'	12'	14'	16'	15'		
D	4'	4'	6'	9'	11'	13'	16'		

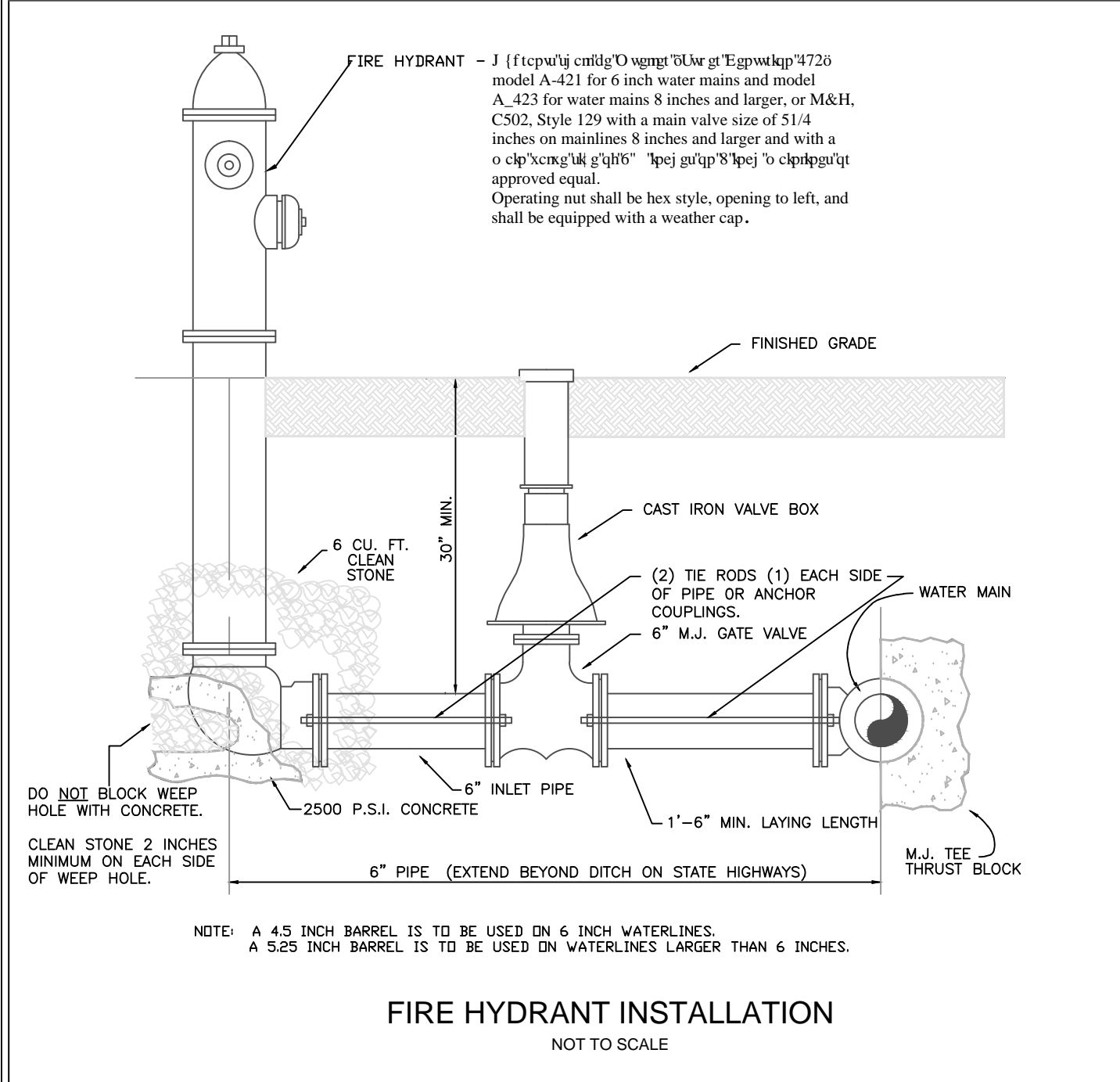
SIZE		11-1/4° BEND							
A	9'	9'	11'	13'	16'	18'	30'		
B	9'	9'	11'	13'	16'	18'	30'		
C	8'	8'	10'	12'	14'	16'	15'		
D	4'	4'	5'	6'	8'	9'	16'		

**THRUST BLOCK DETAILS & DIMENSIONS**  
 NOTE: M.J. - MECHANICAL JOINT.  
 THRUST BLOCK TO BE POURED AGAINST UNDISTURBED EARTH.  
 NOTE: PIPE SHALL BE WRAPPED IN 5 MIL. PLASTIC WHERE THRUST BLOCKS ARE INSTALLED.  
 PLASTIC LINING SHALL NOT COVER OR IMPAIR THE FLOW OF WATER FROM THE WEEP HOLE ON A FIRE HYDRANT OR BLOW OFF HYDRANT ASSEMBLY.

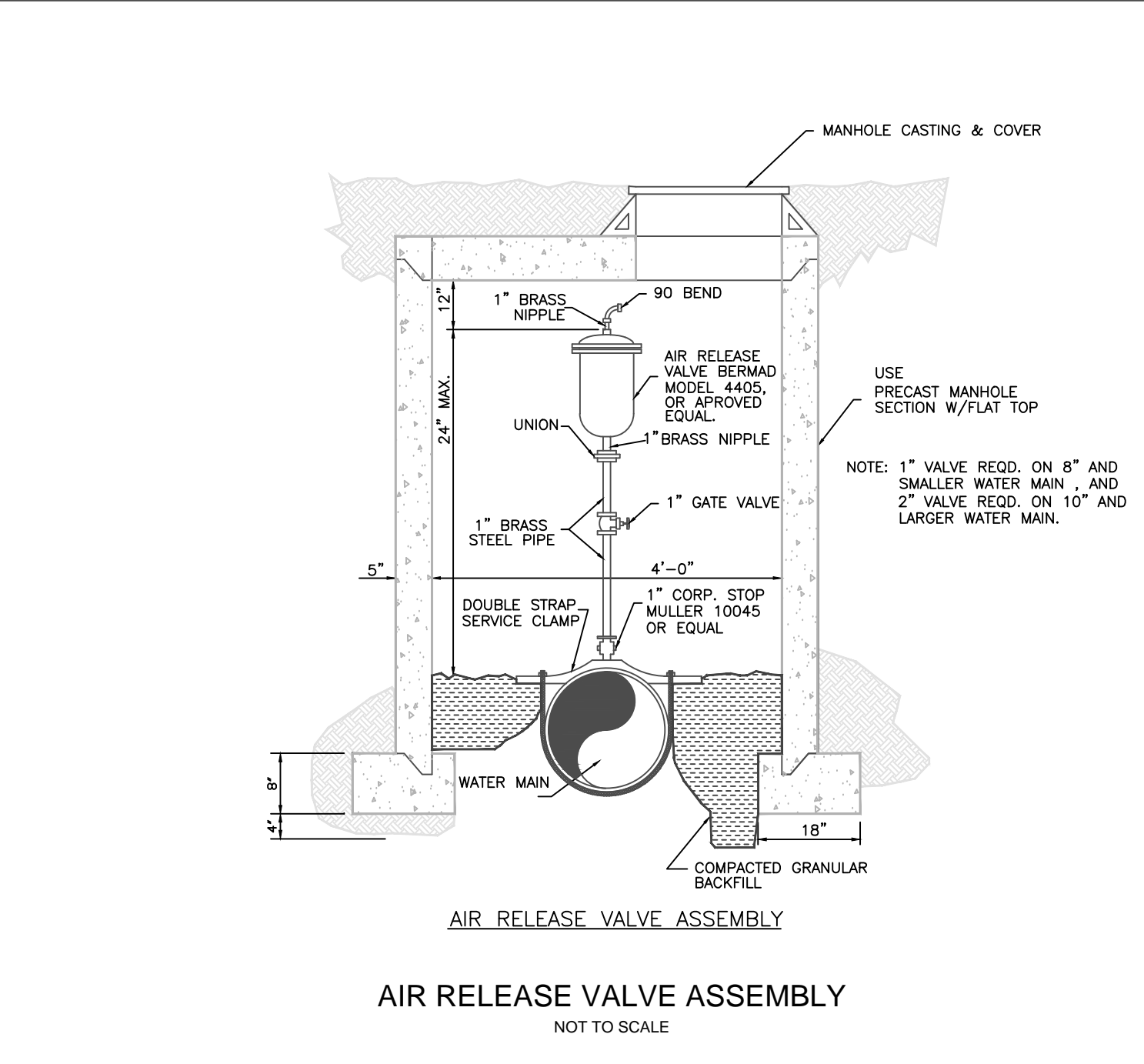
NOTE:  
 1. CLASS 250 PSI PIPE SHALL BE USED UNLESS SPECIFIED OTHERWISE.  
 2. LOCATOR WIRE SHALL BE PLACED IN CASING WITH CARRIER PIPE.  
 3. TRENCHES SHALL BE OPENED SUFFICIENTLY TO ALLOW INSTALLATION AND REMOVAL OF CARRIER PIPE IN MANUFACTURED LENGTHS FROM EITHER END OF THE CASING PIPE.  
 4. SPACERS SHALL BE USED IN ALL CASINGS WHERE CARRIER PIPE IS 2" OR GREATER. SPACERS SHALL BE A MAXIMUM OF 7 FEET AND WITHIN 2' OF EACH BELL APART WITH A MINIMUM 2 INCH SPACE BETWEEN THE CASING AND THE CARRIER PIPE.  
 STEEL CASING SHALL BE USED IN ALL BORE AND JACK CROSSINGS, AND WHEN THE TOP OF THE CASING PIPE IS LESS THAN 24" BELOW ROAD SURFACE OR WHEN THE CASING SHALL BE INSTALLED GREATER THAN 7' DEEP FROM ROAD SURFACE. STEEL CASING SHALL HAVE A MINIMUM CLEARANCE OF 2 INCHES BETWEEN CASING AND CARRIER PIPE. SPACERS SHALL BE INSTALLED NO MORE THAN 18" FROM EITHER END OF CASING.



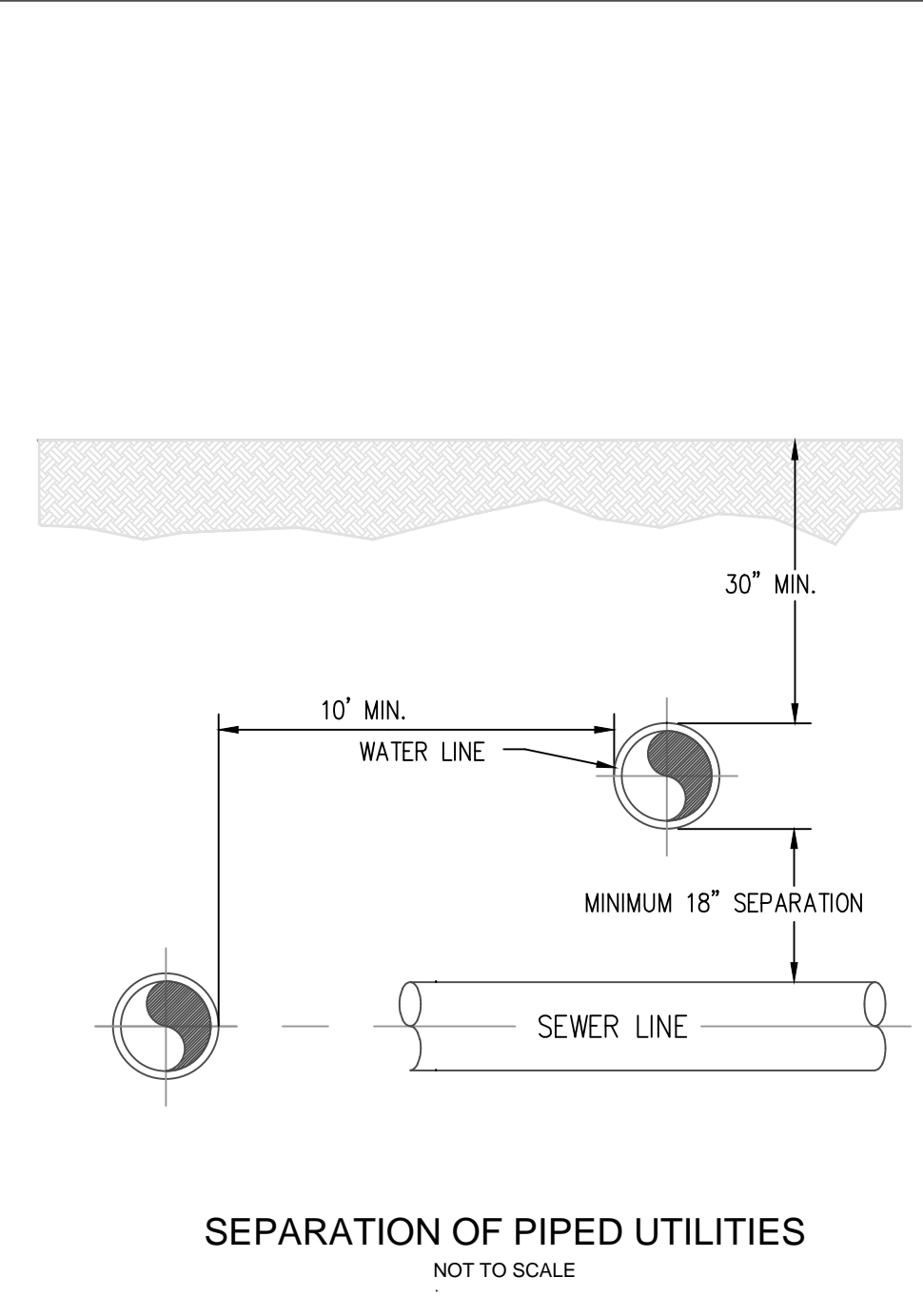
NOTE: ALL COPPER SHALL BE TYPE K  
 STATE ROAD CROSSINGS SHALL BE BORED AND STEEL CASED



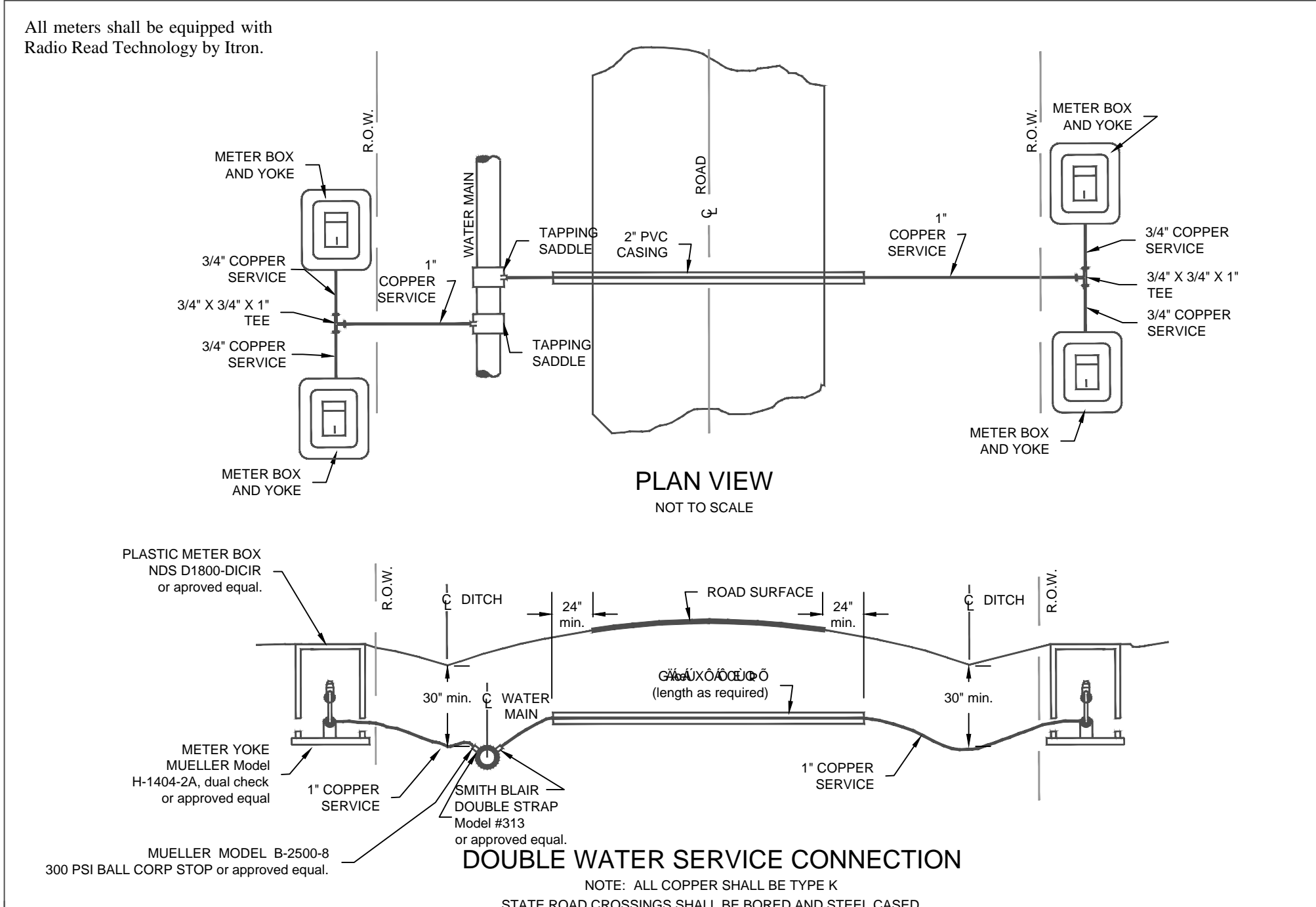
NOTE: A 4.5 INCH BARREL IS TO BE USED ON 6 INCH WATERLINES.  
 A 5.25 INCH BARREL IS TO BE USED ON WATERLINES LARGER THAN 6 INCHES.



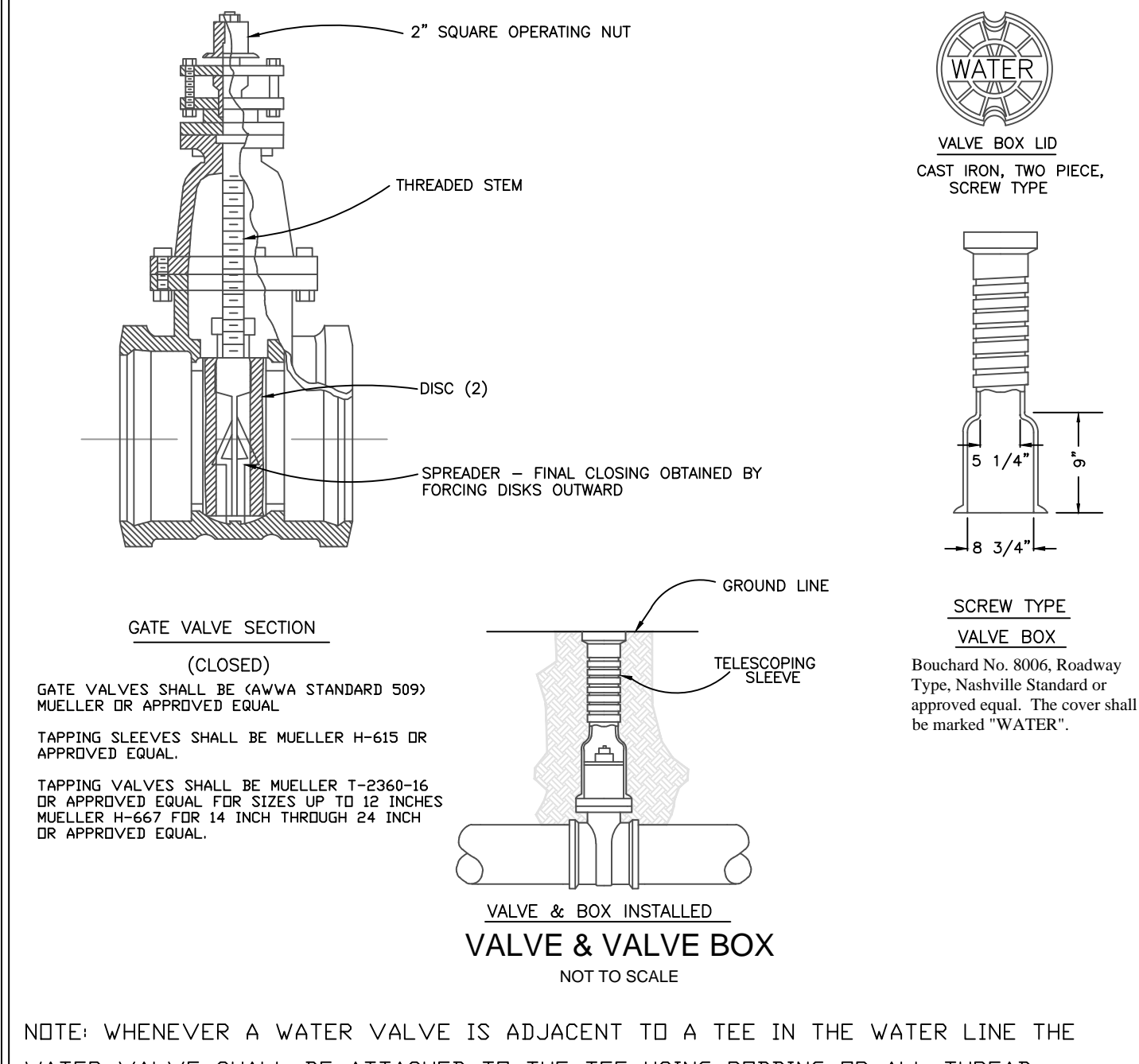
NOTE: 1\"/>
 AND SMALLER WATER MAIN, AND 2\"/>
 VALVE REQD. ON 10\"/>
 AND LARGER WATER MAIN.



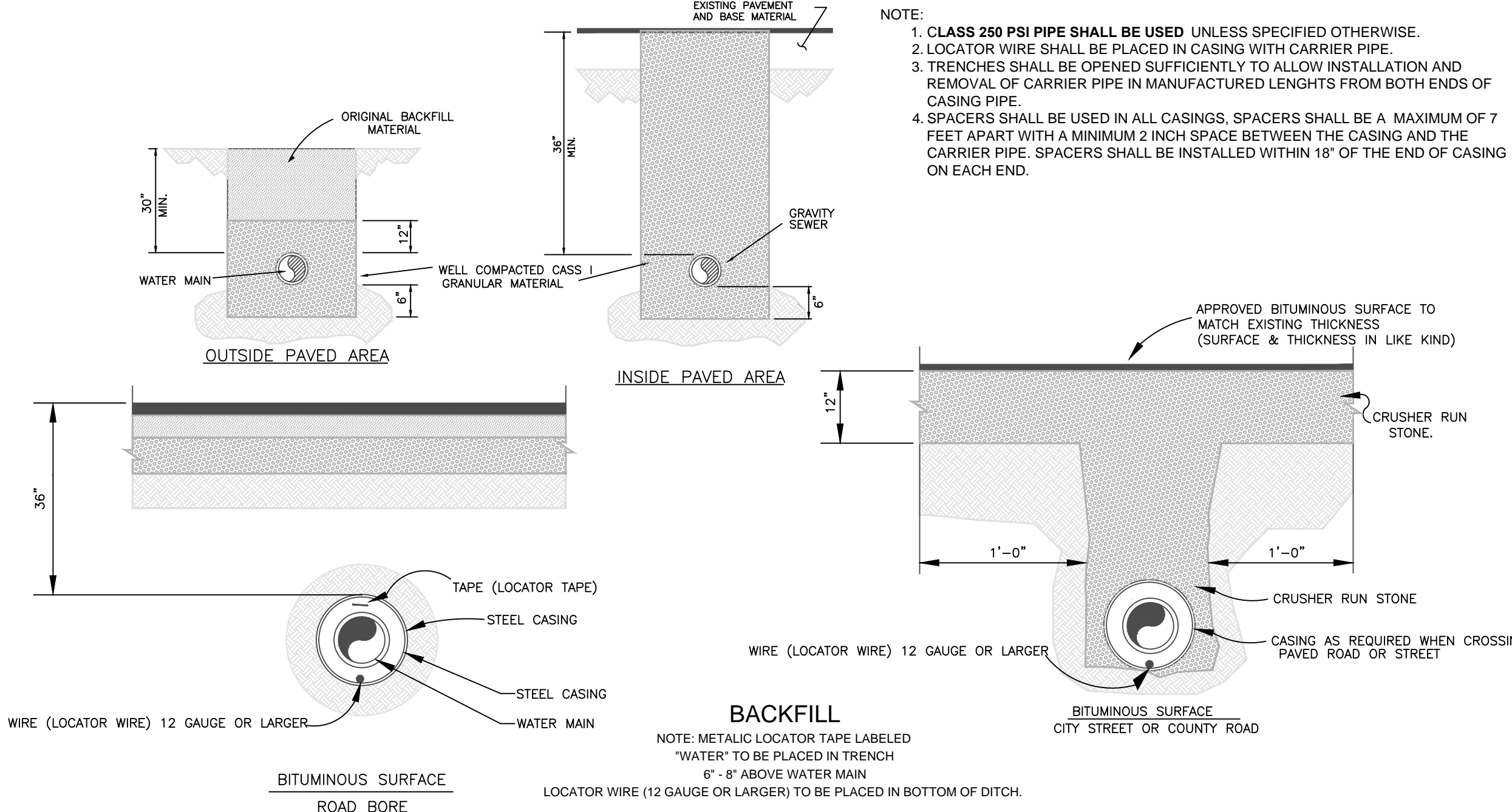
NOTE: 1\"/>
 AND SMALLER WATER MAIN, AND 2\"/>
 VALVE REQD. ON 10\"/>
 AND LARGER WATER MAIN.



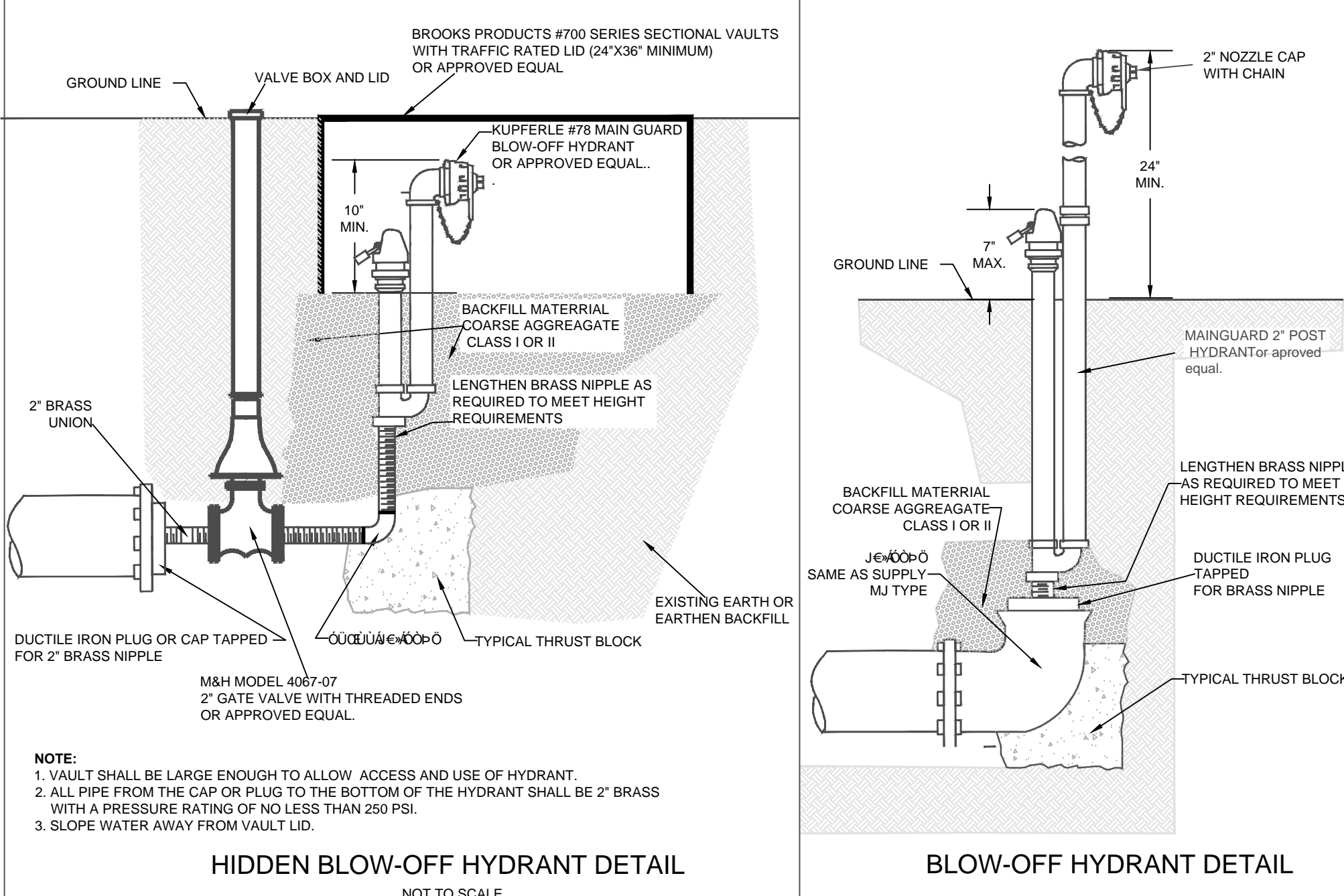
NOTE: ALL COPPER SHALL BE TYPE K  
 STATE ROAD CROSSINGS SHALL BE BORED AND STEEL CASED



NOTE: WHENEVER A WATER VALVE IS ADJACENT TO A TEE IN THE WATER LINE THE WATER VALVE SHALL BE ATTACHED TO THE TEE USING RODDING DR ALL THREAD.



NOTE: METAL LOCATOR TAPE LABELED \"/>
 WATER\" TO BE PLACED IN TRENCH 6\"/>
 8\"/>
 ABOVE WATER MAIN  
 LOCATOR WIRE (12 GAUGE OR LARGER) TO BE PLACED IN BOTTOM OF DITCH.



NOTE: 1. VAULT SHALL BE LARGE ENOUGH TO ALLOW ACCESS AND USE OF HYDRANT.  
 2. ALL PIPE FROM THE CAP OR PLUG TO THE BOTTOM OF THE HYDRANT SHALL BE 2\"/>
 BRASS WITH A PRESSURE RATING OF NO LESS THAN 250 PSI.  
 3. SLOPE WATER AWAY FROM VAULT LID.

**CITY OF CROSSVILLE**  
**ENGINEERING DEPARTMENT**  
 99 MUNICIPAL AVENUE  
 CROSSVILLE, TN 38555  
 PHONE: (931) 484-5113  
 FAX: (931) 484-7713

**POTABLE WATER LINE**  
**INSTALLATION DETAILS**

NO.	DATE	REVISION DESCRIPTION	K.G.O.
1	3-15-04	ADD & EDIT TEXT	K.G.O.
2	12-16-04	ADD TO FH DETAIL	K.G.O.
3	7-5-05	ADD VALVE RESTRAINT	K.G.O.
4	18-15-05	ROAD BORE DETAIL	K.G.O.
5	7-14-08	ADDED CASING NOTES	K.G.O.
6	7-22-13	ADD HIDDEN B.O. HYD. DETAIL	K.G.O.

FILE NAME: CROSSVILLE TYP  
 DETAILS.DWG  
 DRAWN BY: TRB  
 CHECKED BY: GD  
 DATE: 6/15/99  
 PROJECT NO:  
**SHEET NO.**  
**1 OF 1**  
**SHEET TITLE**  
**DETAILS**